



**JOINT PUBLIC HEALTH, WELFARE, & LABOR
COMMITTEE MEETING
WIOA – MASA OVERVIEW**

Cody Waits, Executive Director,
Workforce Connections

Eddie Thomas, Director,
Office of Employment & Training
July 28, 2025

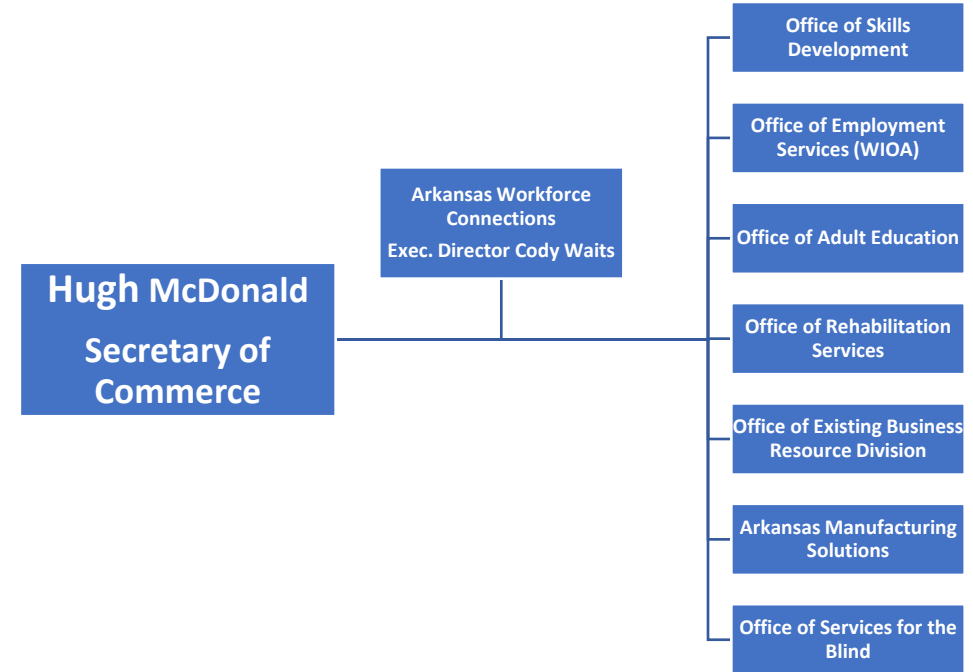


OUR MISSION

The mission of the Department of Commerce is to champion economic opportunities through strategic initiatives and an equitable regulatory environment that attracts and grows businesses, safeguards consumers, enhances workforce quality, and energizes our infrastructure, creating a better quality of life for all Arkansans.

Arkansas Workforce Connections

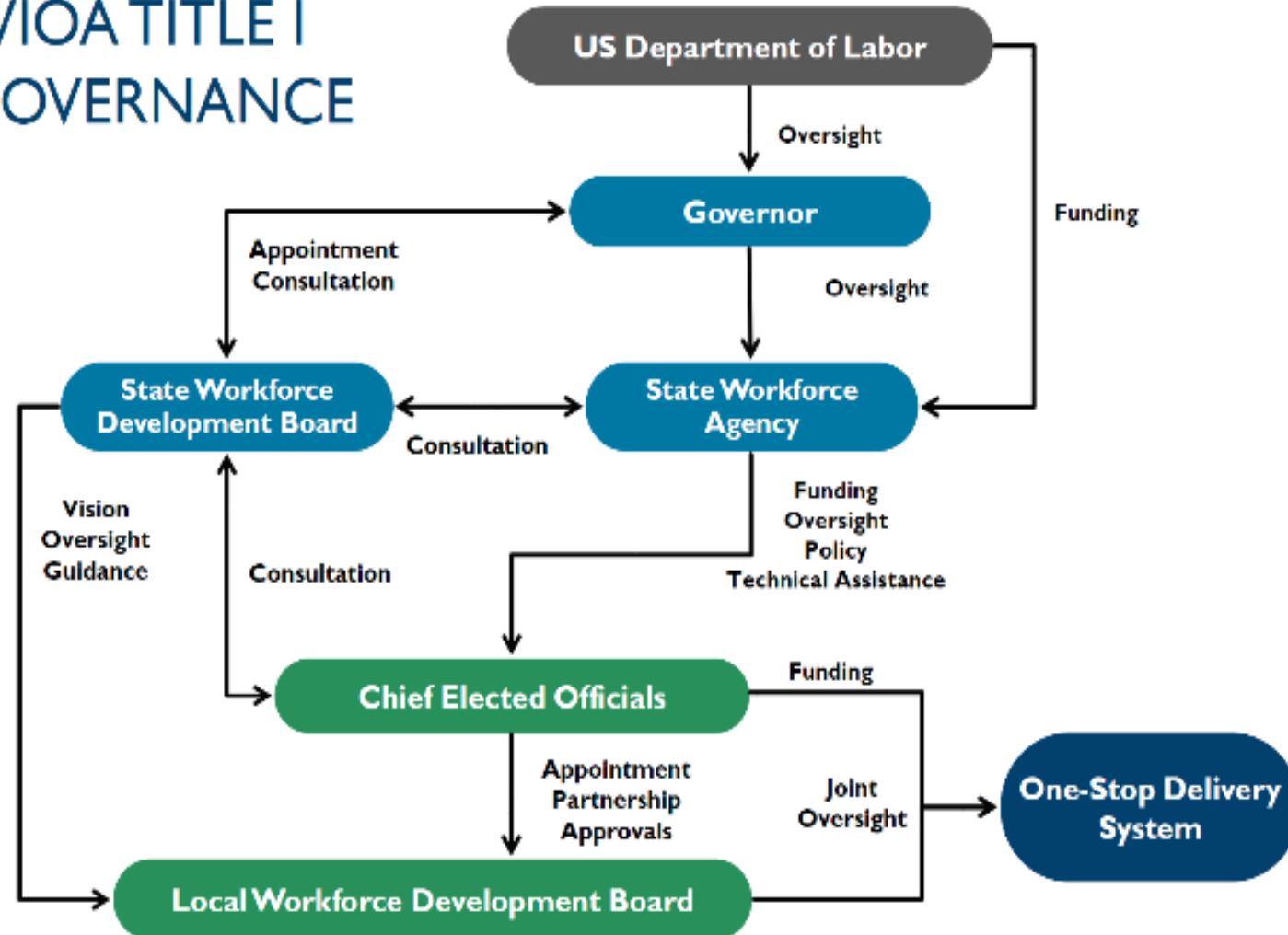
mission is to provide support and guidance to help individuals succeed in their careers while offering companies incentives to maintain a skilled and technically trained workforce, meeting industry demands now and in the future.



WIOA Current Structure



WIOA TITLE I GOVERNANCE



WIOA Current Structure



WIOA PY' 25 FUNDING



Workforce Innovation and Opportunity Act (WIOA) Titles I and III: Number of Participants Served

Local Workforce Development Area	PY21 (July 1, 2021 - June 30, 2022)				PY22 (July 1, 2022 - June 30, 2023)				PY 23 (July 1, 2023 - June 30, 2024)				PY24 (July 1, 2024 - June 30, 2025)			
	Adult	Dislocated Worker	Youth	Wagner-Peyser	Adult	Dislocated Worker	Youth	Wagner-Peyser	Adult	Dislocated Worker	Youth	Wagner-Peyser	Adult	Dislocated Worker	Youth	Wagner-Peyser
City of Little Rock	81	21	52	8,954	98	18	49	11,949	59	11	40	11,261	57	14	54	8,354
Central	41	20	20	6,616	73	34	33	7,013	28	15	30	6,598	28	15	26	9,642
North Central	160	15	166	4,713	190	9	157	4,328	173	10	118	3,698	119	5	95	2,486
Northwest	127	50	113	3,918	121	30	72	4,650	44	17	40	4,409	47	11	29	6,409
West Central	73	30	53	7,903	95	11	55	9,862	86	7	38	9,059	36	6	29	5,774
Western	40	7	40	3,871	72	7	46	5,456	59	18	49	5,519	29	9	29	3,947
Southwest	92	12	21	4,851	68	15	18	5,048	64	15	29	4,392	28	9	18	2,915
Southeast	99	19	132	1,113	107	13	90	4,660	112	1	88	4,738	89	1	67	4,109
Northeast	127	34	102	6,034	122	15	74	6,986	89	13	41	6,228	90	13	38	6,787
Eastern	94	8	43	1,559	121	12	58	3,001	98	11	85	1,466	122	15	77	1,783
Total	934	216	742	49,532	1067	164	652	62,953	812	118	558	57,368	645	98	462	52,206

WIOA PY' 25 FUNDING



Workforce Innovation and Opportunity Act (WIOA) Title I Funding to Local Workforce Development Boards

Local Area	Subrecipient	PY21 (July 1, 2021 - June 30, 2022)				PY22 (July 1, 2022 - June 30, 2023)				PY23 (July 1, 2023 - June 30, 2024)				PY24 (July 1, 2024 - June 30, 2025)				Cumulative Grand Total by Subrecipient
		Youth	Adult	Dislocated Worker	TOTAL	Youth	Adult	Dislocated Worker	TOTAL	Youth	Adult	Dislocated Worker	TOTAL	Youth	Adult	Dislocated Worker	TOTAL	
Central	Central AR Planning & Development District	\$ 676,565	\$ 653,964	\$ 455,708	\$ 1,786,237	\$ 670,816	\$ 609,430	\$ 348,194	\$ 1,628,440	\$ 545,770	\$ 510,864	\$ 315,031	\$ 1,371,665	\$ 579,698	\$ 502,216	\$ 346,518	\$ 1,428,432	\$ 6,214,774
Little Rock	Little Rock Workforce Development Board	330,268	396,631	252,226	979,125	387,501	428,084	245,192	1,060,777	291,969	289,613	259,657	841,239	280,382	261,332	255,513	797,227	\$ 3,678,368
North Central	North Central - White River Planning & Development District	709,564	937,013	58,375	1,704,952	642,370	717,240	154,124	1,513,734	561,697	649,777	95,383	1,306,857	497,790	477,131	199,347	1,174,268	\$ 5,699,811
Northeast*	North East - Employment Training Services, Inc	471,834	558,044	209,489	1,239,367	419,547	447,998	221,181	1,088,726	327,299	377,934	132,012	837,245	382,297	323,286	243,848	949,431	\$ 4,114,769
Northwest	Northwest Arkansas Economic Development District	591,537	700,400	360,099	1,652,036	536,433	664,230	371,700	1,572,363	458,735	424,368	413,856	1,296,959	654,729	723,863	403,305	1,781,897	\$ 6,303,255
Southeast	Southeast Arkansas Economic Development District	804,134	779,008	238,882	1,822,024	720,360	827,037	171,833	1,719,230	837,506	927,302	239,594	2,004,402	691,350	677,515	277,191	1,646,056	\$ 7,191,713
Southwest	Southwest Planning & Development District	507,432	623,254	157,391	1,288,077	431,446	483,749	205,883	1,121,078	397,335	434,193	159,071	990,599	347,463	340,919	260,722	949,104	\$ 4,348,858
West Central	West Central Arkansas Planning & Development District	605,600	620,217	260,754	1,486,571	530,834	554,281	247,703	1,332,818	478,432	636,223	38,080	1,152,735	470,279	427,741	235,028	1,133,048	\$ 5,105,172
Western	Western Arkansas Planning & Development District	376,468	477,213	152,938	1,006,619	307,911	357,006	241,276	906,193	289,614	361,362	175,625	826,601	262,160	288,063	284,383	834,606	\$ 3,574,019
Eastern	Workforce Development Board of Eastern Arkansas	397,398	467,718	122,624	987,739	352,156	440,058	73,541	865,755	370,098	554,316	158,671	1,083,085	299,676	310,236	207,460	817,372	\$ 3,753,951
Statewide Set-Aside	N/A				4,106,108				3,735,927				3,471,470				3,361,487	14,674,992
Total		\$ 5,470,799	\$ 6,213,461	\$ 2,268,487	\$ 18,058,856	\$ 4,999,374	\$ 5,529,113	\$ 2,280,627	\$ 16,545,041	\$ 4,012,685	\$ 4,655,088	\$ 1,671,950	\$ 15,182,858	\$ 3,886,126	\$ 3,830,086	\$ 2,366,797	\$ 14,872,928	\$ 49,984,691

WIOA PY' 25 FUNDING



PY25 FY26 Title I Planning Estimates Youth, Adult, and DLW

Program	Allotments to State	DLW Task Force	Overview PY 2025			For Distribution to LWDA's
			State-Level Reserve	State Administration	Statewide Activities	
Youth	\$6,199,664		\$929,949	1/3 of State-level Reserve \$309,983	2/3 of State-level Reserve \$619,966	\$5,269,715
Adult	\$6,024,321		\$903,649	\$301,216	\$602,433	\$5,120,672
Dislocated Worker	\$4,069,250	\$1,017,313	\$610,387	\$203,462	\$406,925	\$2,441,550
Totals	\$16,293,235	\$1,017,313	\$2,443,985 (State Admin + Statewide Activities)	\$814,661	\$1,629,324	\$12,831,937

WIOA vs. MASA – Key Changes



The United States Department of Labor- Employment and Training Administration (ETA) administers federal workforce development and worker dislocation programs. These services are primarily provided through State and local workforce development systems with support from federal and other funding sources. ETA’s MASA budget aims to streamline these programs and provide State and local governments with the flexibility to administer programs to meet the needs of their workforce and economy.

WIOA vs. MASA – Key Changes

- Streamlined Funding through Block Grants
- Reduced Federal Mandates
- Increased State Flexibility and Responsibility

The FY 2026 President’s Budget prioritizes more efficient administration and improved outcomes by consolidating 11 workforce development programs into a single Make America Skilled Again (MASA) grant program that would provide funding directly to States and localities.

The Budget invests \$2,965,905,000 in the newly created MASA grant program to give States and localities the flexibility to respond to their workforce needs without having to apply for and manage multiple Federal programs.





TRAINING AND EMPLOYMENT SERVICES

	2024 <u>Enacted</u>	2025 <u>Enacted</u>	2026 <u>Request</u>
Make America Skilled Again	0	0	2,965,905
Adult Employment and Training Activities	885,649	885,649	0
Youth Activities	948,130	948,130	0
Dislocated Workers Employment and Training Activities	1,396,412	1,396,412	0
Formula Grants	1,095,553	1,095,553	0
National Dislocated Worker Grants	300,859	300,859	0
Indian and Native American Programs	60,000	60,000	0
Migrant and Seasonal Farmworkers	97,396	97,396	0
Reentry Employment Opportunities	115,000	115,000	0
Apprenticeship Program	285,000	285,000	0
Community Projects	107,834	0	0
Workforce Data Quality Initiative	6,000	6,000	0
YouthBuild	105,000	105,000	0
Total Budget Authority	4,006,421	3,898,587	2,965,905

- *Adult, Dislocated Worker, and Youth funds merged into one flexible pool*
- *Minimum of 10 percent of grantee expenditures required on Registered Apprenticeship activities*
- *Title III Wagner Peyser Employment Services merged into total budget*
- *Lower ETA administrative costs-reduction of \$37,995,000 below the FY 2025 Enacted amount*
- *24% cut to current funding levels*

Items to Consider...



- Local Funding Flexibility
 - Design services that fit regional industry and community needs
- Less Bureaucracy
 - State level monitoring and reporting burden may decrease with one set of performance metrics and financial reporting instead of three
 - Staff spend more time on delivering services vs. managing compliance
- Expands registered apprenticeships and pre-apprenticeships
 - 10% requirement
- Redefine key performance indicators
- Streamline & centralize administrative and program functions to reduce non-training related costs
- Regional providers reliant on formula dollars may lose funding or program service delivery roles
 - Restructuring of the current workforce development board landscape in Arkansas



Policy Strategy



- Reviewing WIOA state policies to identify bottlenecks in program success
- Seeking guidance and support from USDOL & Workforce Associations
- Facilitating discussions with national peers and state partners
 - Utah & Louisiana
- Mapping WIOA and affiliated programs to MASA consolidated block grant model
- Ongoing conversations due to passage of Act 145
 - Study of Workforce and Social Services Reform





QUESTIONS???

Cody Waits, Executive Director,
Workforce Connections

Eddie Thomas, Director,
Office of Employment & Training

July 28, 2025