



**Arkansas Department
of Human Services**
Division of Children and Family Services
Cecile Blucker, Director



P.O. Box 1437, Slot S-560 Little Rock, AR 72203-1437 • 501-682-8770 • Fax: 501-682-6968 • TDD: 501-682-1442

October 26, 2012

The Honorable Stephanie Malone, Chair
House Committee on Aging, Children,
and Youth, Legislative and Military Affairs
Arkansas Legislative Council
315 State Capitol Building
Little Rock, Arkansas 72201

The Honorable Missy Irvin, Chair
Senate Committee on Children
and Youth
Arkansas Legislative Council
315 State Capitol Building
Little Rock, Arkansas 72201

Dear Representative Malone and Senator Irvin:

Act 1222 of 1995 mandates an annual evaluation of the performance of the Division of Children and Family Services. Attached is the Annual Report Card (ARC) produced in compliance with that mandate. The report covers the State Fiscal Year (SFY) 2012.

Forty copies of the report and an electronic copy are attached for your convenience.

Should you have questions regarding this material, please feel free to contact me.

Sincerely,

A handwritten signature in purple ink that reads "Cecile Blucker".

Cecile Blucker
Director

CB: fs

cc: John Selig, Director, Department and Human Services

Attachments (40)

SFY 2012

Annual Report Card



Produced for:
Arkansas Department of Human Services
Division of Children and Family Services

Produced by:
Hornby Zeller Associates, Inc.

TABLE OF CONTENTS

Executive Summary	i
Part I: Performance Indicators	1
Percentage of Children with True Allegations of Child Maltreatment Three Months, Six Months and One Year after a Previous True Report.....	2
Percentage of Foster Families with True Reports of Maltreatment	3
Percentage of Children Receiving Supportive Services and Protective Services who were Abused or Neglected within One Year of the Initiation of Services	4
Percentage of Children Receiving Supportive Services and Protective Services who Entered Care within One Year of Initiation of Services ..	5
Percentage of Children Entering Foster Care who Returned Home within Eighteen Months	6
Percentage of Children in Foster Care who have Experienced Two or Fewer Placements	7
Percentage of Siblings in Foster Care who are Placed Together	8
Percentage of Children Who Were Adopted Within One Year of Having Their Goal Changed to Adoption.....	9
Children Placed in Pre-adoptive Homes whose Adoptions were Finalized within Twelve Months of Entering Placement.....	10
Part II: Compliance Index.....	11
Timely Initiation of Child Maltreatment Assessments.....	12
Timely Completion of Child Maltreatment Assessments.....	13
24- and 72-Hour Initial Health Screenings.....	14
Comprehensive Health Assessments.....	15
Foster Home Recruitment.....	16
Foster Home Re-evaluations.....	16
Required Visits Made by Worker	17
Part III: Description of Population and Services.....	18
Section I: True Child Maltreatment Reports	19
Child Maltreatment Assessments	19
Characteristics of Children in True Maltreatment Reports	20
Children Involved in Allegations of True Maltreatment Reports	22
Section II: Foster Care.....	23
Characteristics of Children in Foster Care.....	23
Entries into Foster Care.....	27
Exits from Foster Care.....	30
Permanency Goals of Children in Foster Care	33
Length of Stay of Children in Foster Care.....	34
Number of Placements of Children in Foster Care	35

Characteristics of Children who Experienced Three or More Placements...	36
Current Placement of Children in Foster Care.....	38
Characteristics of Children on Runaway Status at the End of the Year.....	39
Characteristics of Children in Relative Care	41
Section III: Adoption.....	43
Characteristics of Children with the Permanency Goal of Adoption at the End of the Year	43
Characteristics of Children whose Parents have had Parental Rights Terminated During the Year	45
Characteristics of Children Available for Adoption at the End of the Year.....	47
Current Placement of Children Available for Adoption.....	49
Characteristics of Children Placed in Pre-adoptive Homes	50
Children not Placed in Pre-adoptive Homes who are Available for Adoption	52
Special Needs	52
Characteristics of Children with Finalized Adoptions	53
Subsidized Adoptions	55
Characteristics of Children who Receive Adoption Subsidies.....	55
APPENDICES	57

EXECUTIVE SUMMARY

The Annual Report Card (ARC) is distributed to agency managers and to the legislative committees dealing with children and youth. The ARC for State Fiscal Year (SFY) 2012 consists of three parts:

1. **Performance Indicators**, which provide information on service outcomes, such as:
 - a. *Percentage of Children with True Allegations of Child Maltreatment Three Months, Six Months and One Year After a Previous True Report*
 - b. *Percentage of Siblings in Placement who are Placed Together*
 - c. *Percentage of Children Adopted within 12 Months of Having Their Goal Changed to Adoption*

2. **Compliance Index**, which reports on the Division's compliance with requirements set by DCFS with guidance from the Arkansas legislative children and youth committees, such as:
 - a. *Timely Completion of Child Maltreatment Assessments*
 - b. *24- and 72-Hour Initial Health Screenings for Children Entering Foster Care*
 - c. *Foster Home Recruitment*

3. **Description of Population and Services**, which describes the children who were the subjects of maltreatment reports, served in foster care and/or provided adoption services, such as:
 - a. *Types of Allegations in Child Maltreatment Reports*
 - b. *Permanency Goals of Children in Foster Care*
 - c. *Characteristics of Children Placed in Adoptive Homes*

The ARC provides this information on a yearly basis, showing trends over time. Descriptions of the client population at the various service stages are provided as well, so that the agency has information on populations to target to improve performance as well as issues important to the safety, permanency and well-being of those served.

Part I: Performance Indicators

The Division of Children and Family Services (DCFS) has established nine performance indicators to measure progress with regard to its major goals of child safety, permanency and well-being.

There were no noteworthy areas in this section during the fiscal year.

Part II: Compliance Index

DCFS has set compliance measures with guidance from the House Committee on Aging, Children and Youth, Legislative and Military Affairs and the Senate Interim Committee on Children and Youth. An index is compiled by reporting the level of compliance with these measures.

The Division improved in four areas regarding compliance requirements this fiscal year.

- Timely Initiation of Investigations

Of the child maltreatment assessments assigned to DCFS, agency staff initiated **86 percent** of the investigations on time, an increase of two percentage points from SFY 2011 (84%) while remaining below the compliance goal of 95 percent.

- Timely Completion of Child Maltreatment Assessments

Of the investigations assigned to DCFS during SFY 2012, **64 percent** were completed within the required 30-day period, an increase of five percentage points from SFY 2011 (59%), though still well below the goal of 90 percent. There has been a steady increase in compliance with respect to timely completion of investigations from SFY 2009 (50%).

- 24-Hour and 72-Hour Initial Health Screenings

Of the children who required an initial health screening within 24 hours of entering foster care, **67 percent** received their screenings in a timely manner. The compliance rate for SFY 2012 is 13 percentage points higher from SFY 2011 (54%) but below the Division's goal of 95 percent compliance.

Of the children who required an initial health screening within 72 hours of entering foster care, **78 percent** received their screenings in a timely manner during SFY 2012. The compliance rate is an increase of 10 percentage points from SFY 2011 (68%) but below the Division's goal of 95 percent compliance.

- Required Visits Made by Worker

Caseworkers statewide made **60 percent** of their required monthly visits to see children in foster care during SFY 2012, which was one

percentage point more than the rate reported for SFY 2011 (59%) and below the goal of 85 percent.

While the Division improved in four areas, there was one area which resulted in a decline in compliance during SFY 2012.

- Foster Home Recruitment

The percentage of foster homes recruited during SFY 2012 stood at **156 percent** of the compliance goal (320 homes), 10 percentage points lower than SFY 2011 (166%).

Part III: Description of Population and Services

This section describes the number and status of maltreatment assessments, children who were subjects of maltreatment reports, children who were served in foster care and children who received adoption services.

- Children in Foster Care

The total number of children in foster care between the ages of zero and five increased by **90 percent** from SFY 2001 (1,748 children) to SFY 2012 (3,317 children). The total number of children in foster care including all ages increased only 36 percent from SFY 2001 (5,704 children) to SFY 2012 (7,739 children).

The total number of children in foster care decreased between SFY 2011 and SFY 2012. Specifically, the number of children decreased by **seven percent** from SFY 2011 (7,959) to SFY 2012 (7,439).

PART I: PERFORMANCE INDICATORS

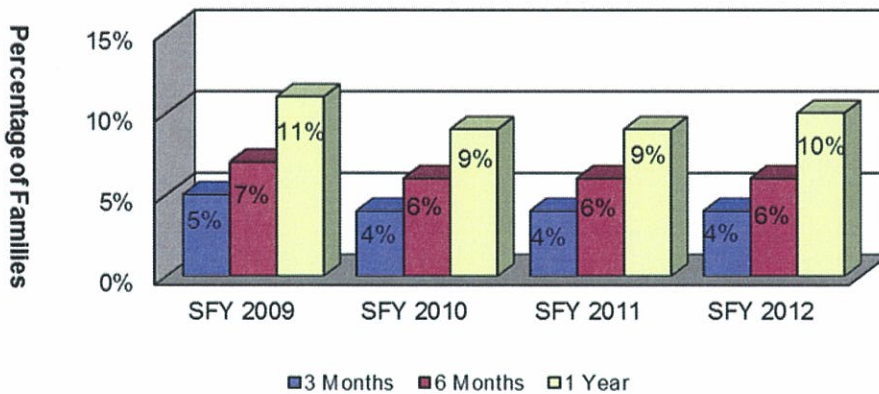
The Division has established nine performance measures to indicate levels of achievement of its major goals of child safety, family preservation and permanency:

- Percentage of children with true allegations of child maltreatment three months, six months and one year after a previous true report;
- Percentage of foster families with true reports of maltreatment;
- Percentage of children receiving Supportive Services or Protective Services who were abused or neglected within one year of the initiation of services;
- Percentage of children receiving Supportive Services or Protective Services who entered foster care within one year of the initiation of services;
- Percentage of children in foster care who returned home within 18 months;
- Percentage of children in foster care who have experienced two or fewer placements;
- Percentage of siblings in foster care who are placed together;
- Percentage of children who were adopted within one year of having their goal changed to adoption; and
- Number of children placed in pre-adoptive homes whose adoption were finalized within 12 months of entering a pre-adoptive placement.

Percentage of Children with True Allegations of Child Maltreatment Three Months, Six Months and One Year after a Previous True Report

Of the 8,632 children who were involved in a true report of maltreatment between July 2010 and June 2011, 366 (4%) experienced a repeat true report of maltreatment within three months of the initial report, 534 (6%) were involved in a repeat true report within six months of the original report, and 845 (10%) were involved in a repeat true report within 12 months of the first report. The number of children who experienced a recurrence of maltreatment has remained fairly consistent over the last four fiscal years, varying only by one to two percentage points.

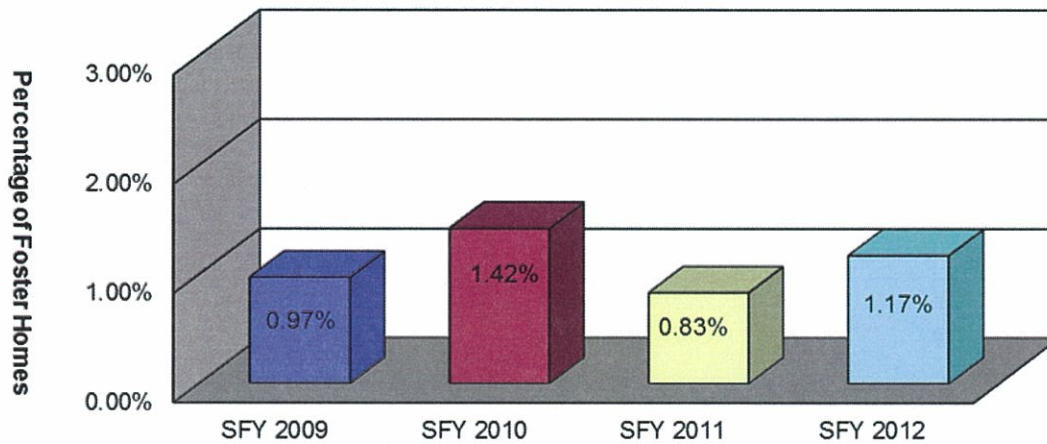
Chart 1: Percentage of Families with True Allegations of Child Maltreatment within 3 Months, 6 Months and One Year after a Previous True Report



Percentage of Foster Families with True Reports of Maltreatment

There were 149 foster home maltreatment reports received during SFY 2012. Of those, 25 were found to be true. Based on the 2,134 DCFS foster homes¹ open during the year, the percentage of foster families with a true report of maltreatment was 1.17 percent. This is up 0.34 percentage points from SFY 2010 (.83%).

Chart 2: Percentage of Foster Families with True Reports of Maltreatment

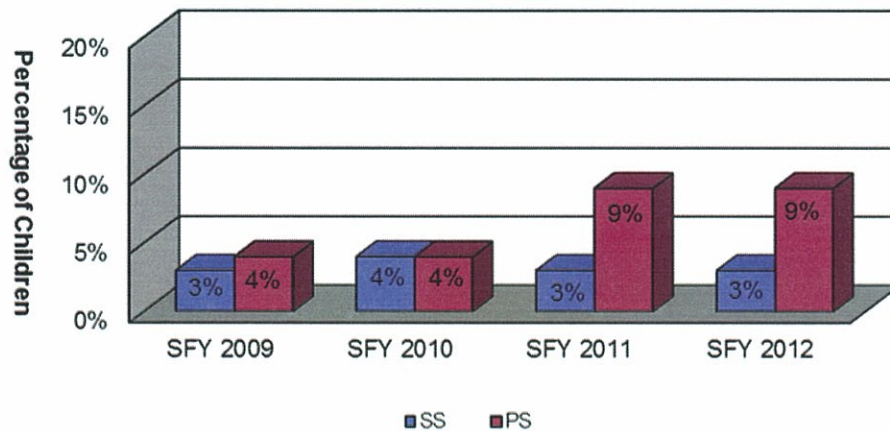


¹ This includes family and therapeutic foster homes.

Percentage of Children Receiving Supportive Services and Protective Services who were Abused or Neglected within One Year of the Initiation of Services

There were 1,578 children who began receiving supportive services (SS) between July 2010 and June 2011. Of those children, 44 (3%) were involved in a true maltreatment report within one year of the initiation of services. There were 11,702 children who began receiving protective services (PS) during that same time period; of those children, 1,006 (9%)² experienced a true report of maltreatment within one year.

Chart 3: Percentage of Children Receiving PS, SS or IFS Services who were Abused or Neglected within One Year of Initiation of Services

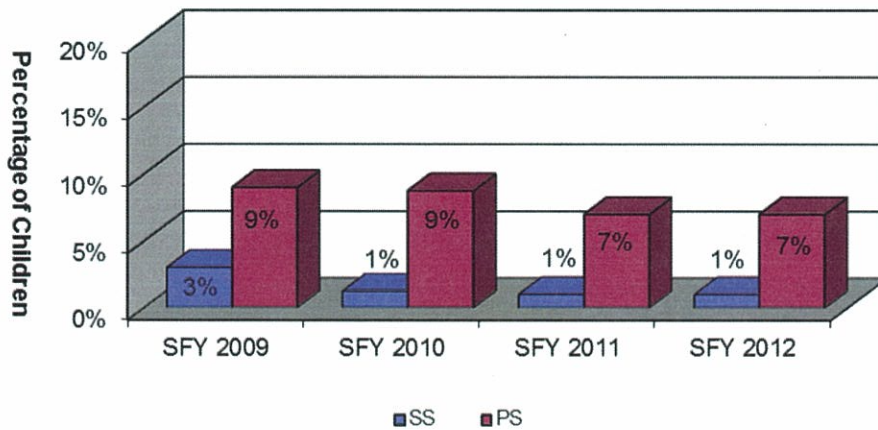


² Beginning with the first quarter of SFY 2011, a new methodology was utilized to measure this percentage. The population is now limited to in-home cases only.

Percentage of Children Receiving Supportive Services and Protective Services who Entered Care within One Year of Initiation of Services

Of the 1,578 children who began receiving supportive services between July 2010 and June 2011, only 17 (1%) entered foster care within one year of the initiation of those services. Of the 11,702 children who began receiving protective services during that same time period, 861 (7%) entered foster care within one year of the initiation of services.

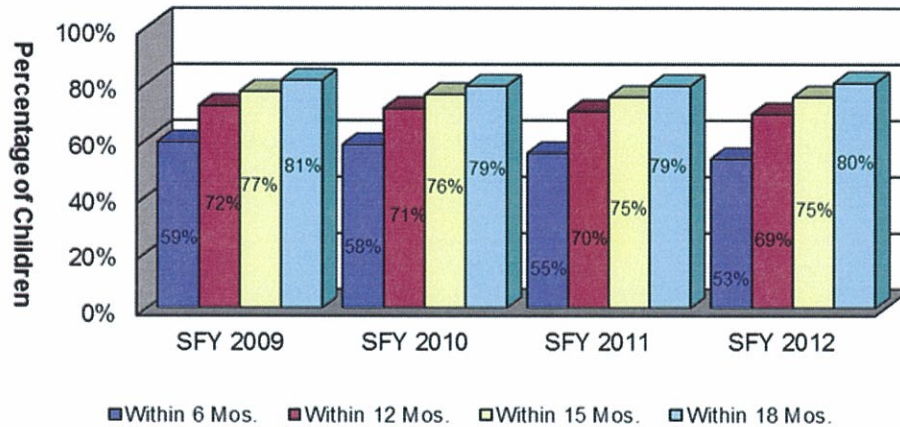
Chart 4: Percentage of Children Receiving SS, PS or IFS Services who Entered Foster Care within One Year of Initiation of Services



Percentage of Children Entering Foster Care who Returned Home within Eighteen Months

There were 4,038 children who entered foster care between January 2010 and December 2010.³ Of those, 2,144 children (53%) returned home within six months, 2,806 children (69%) returned home within 12 months, 3,041 children (75%) returned home within 15 months, and 3,220 children (80%) returned home within 18 months of entering foster care.

Chart 5: Percentage of Children Entering Foster Care who were Returned Home within Eighteen Months

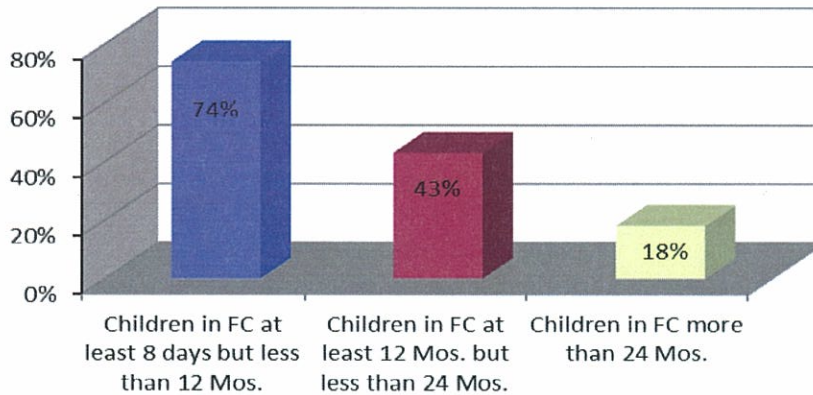


³ The 2010 calendar year was used for this analysis to provide up to 18 months to measure time to reunification.

Percentage of Children in Foster Care who have Experienced Two or Fewer Placements

Placement stability of children in foster care is measured by the percentage of children with two or fewer placements who are in care for varying lengths of time. Of the children in foster care at the end of SFY 2012 who were in care for less than 12 months, 74 percent experienced two or fewer placements; the national standard is 86 percent. Of the children in foster care between 12 and 24 months, 43 percent had two or fewer placements; the national standard for this population is 65.4 percent. Finally, of the children who were in foster care for over two years, only 18 percent experienced two or fewer placements during their stay in foster care, with the national standard for this population being 41.8 percent.

Chart 6: Children in Foster Care who have Experienced Two or Fewer Placements

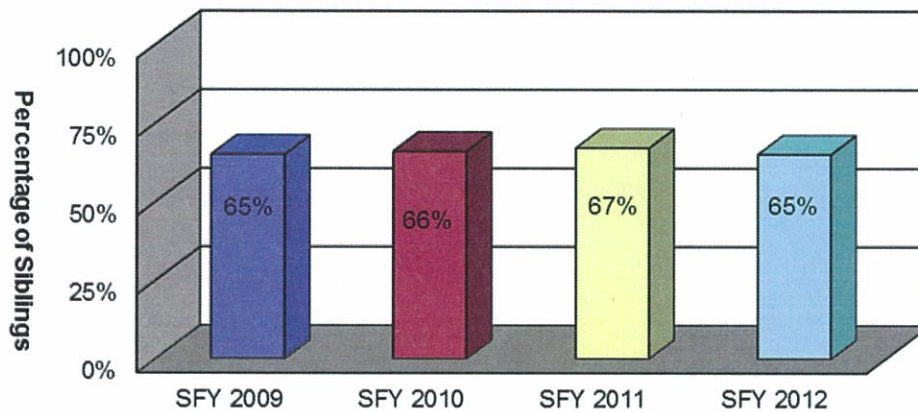


	SFY 2011		SFY 2012	
	Count	Percentage	Count	Percentage
Children in FC at least 8 days but less than 12 months	1,590	73%	1,556	74%
Children in FC at least 12 months but less than 24 months	387	42%	401	43%
Children in FC more than 24 months	195	19%	172	18%

Percentage of Siblings in Foster Care who are Placed Together

At the end of SFY 2012, 1,949 children were in foster care who had siblings who were also in care. Of those children, 1,276 (65%) were placed with at least one of their siblings, while 868 (45%) were placed with all of their siblings. These figures do not exclude children who have been placed separately for valid reasons such as safety issues or court orders.

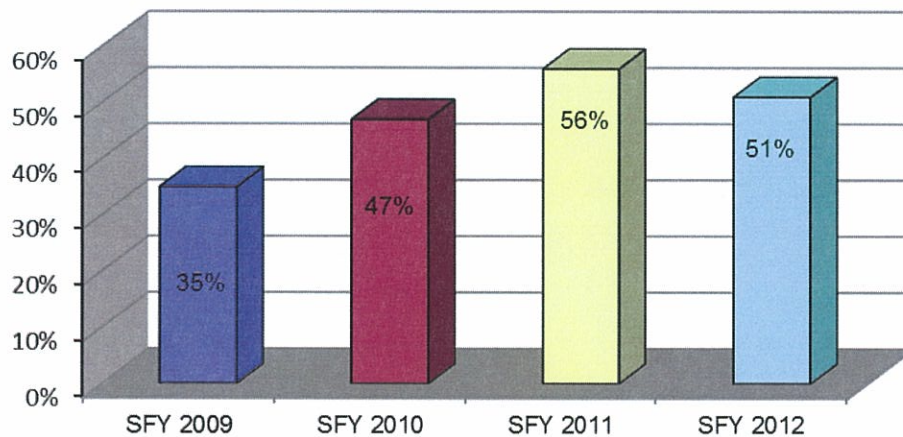
Chart 7: Percentage of Siblings in Foster Care who are Placed Together



Percentage of Children Who Were Adopted Within One Year of Having Their Goal Changed to Adoption

Of the 559 children whose goals were changed to adoption during the previous fiscal year, 284 children (51 percent) were adopted within one year of the goal change.

Chart 8: Percentage of Children Who Were Adopted Within One Year of Having Their Goal changed to Adoption



Children Placed in Pre-adoptive Homes whose Adoptions were Finalized within Twelve Months of Entering Placement

There were 468 children who were placed in pre-adoptive homes between July 2010 and June 2011, an increase from the number of children placed in such homes during the previous year (386). Of the 468 children, 406 (87%) had their adoptions finalized within 12 months of being placed in their pre-adoptive homes.

Thirty-three (7%) of the children who were placed in pre-adoptive homes experienced a disruption, many of which were later placed in different pre-adoptive homes. A disruption occurs when a child has been placed in a pre-adoptive home and the family or the child decides not to proceed with the adoption and the child leaves the pre-adoptive home.

The adoption was still pending finalization 12 months after the placement for 41 children (9%).

Table 1: Children Placed in Pre-adoptive Homes during SFY 2012 whose Adoptions were Finalized within 12 Months of Entering Placement

Status	SFY 2011		SFY 2012	
	Number	Percentage	Number	Percentage
Finalized Adoption within 12 Months	344	89%	406	87%
Disrupted Adoptive Placements	28	7%	33	7%
Children with a Disruption who were Replaced in a Pre-adoptive Home	14	4%	20	4%
Still Pending at the End of the Year	22	6%	41	9%

PART II: COMPLIANCE INDEX

The Division has set compliance measures with guidance from the Joint Interim Committee on Children and Youth. An index is compiled by reporting the level of compliance with these measures.

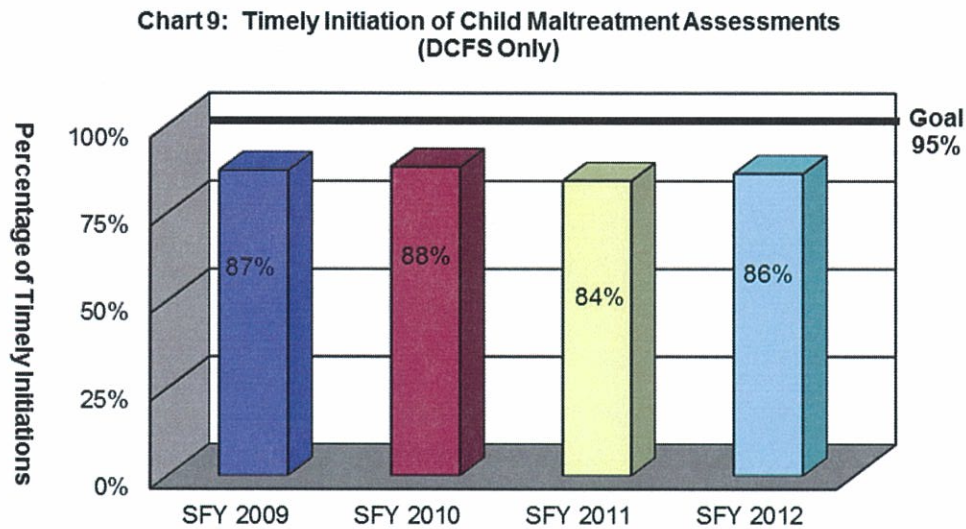
Goal Compliance Measure

- 95%** ***Timely Initiation of Child Maltreatment Assessments.*** The investigator interviews or observes the victim child outside the presence of the alleged offender within 24 hours of any alleged severe maltreatment or within 72 hours otherwise.
- 90%** ***Timely Completion of Child Maltreatment Assessments.*** A determination must be made regarding an allegation of child maltreatment within 30 days of receipt of the allegation.
- 95%** ***24-Hour Initial Health Screenings.*** The screening is conducted within 24 hours after removal from the home on children who enter foster care due to an allegation of severe maltreatment, or if there is evidence of acute illness or injury.
- 95%** ***72-Hour Initial Health Screenings.*** This screening is conducted within 72 hours after removal from the home on all children who enter foster care who are not subject to the 24 hour screening.
- 95%** ***Comprehensive Health Assessments.*** Within 60 days of a child's entering foster care, an evaluation of their physical and mental health status must be completed.
- 320 Homes** ***Foster Home Recruitment.*** DCFS must ensure a sufficient number and variety of foster homes are available which meet minimal standards and match the needs and characteristics of foster children.
- 95%** ***Foster Home Re-evaluations.*** DCFS must re-evaluate, at least annually, each foster home's ability to care for children.
- 85%** ***Required Visits Made by Worker.*** DCFS must provide data on the percentages of required weekly visits made by DCFS workers to children in foster care.

Timely Initiation of Child Maltreatment Assessments

There were 35,743 referrals for child maltreatment assessments during SFY 2012. Of that number, 29,954 (84%) referrals were assigned to DCFS for investigation of which 25,654 assessments were initiated within the required period. This resulted in a compliance rate of 86 percent, which was an increase from SFY 2011 (84%).

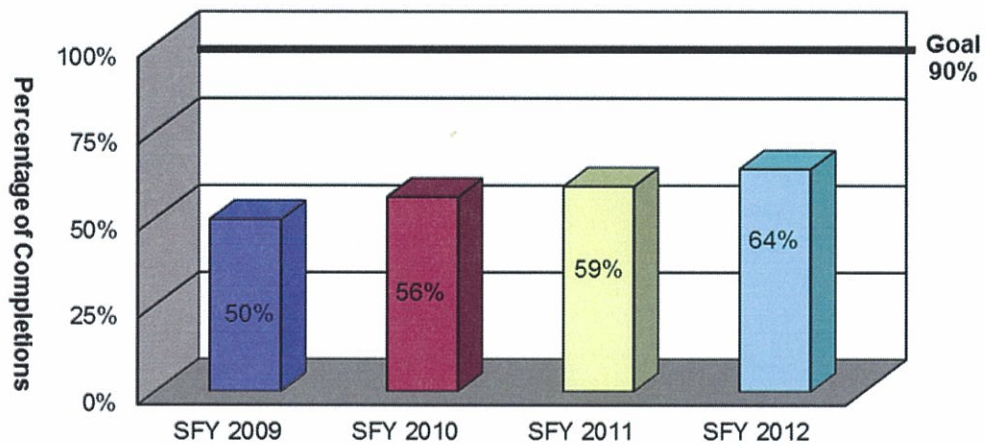
The Crimes Against Children Division (CACD) of the Arkansas State Police was responsible for handling the remaining child abuse referrals. CACD was responsible for 5,789 investigations (16 percent of the total incoming investigations) during SFY 2012. Of those, 5,429 referrals (94%) were initiated in a timely manner.



Timely Completion of Child Maltreatment Assessments

Of the 29,954 assessments initiated by DCFS during SFY 2012, 19,138 were completed within the required 30-day period. This resulted in a compliance rate of 64 percent, representing a steady increase from SFY 2009 (50%) but still well below the goal of 90 percent.

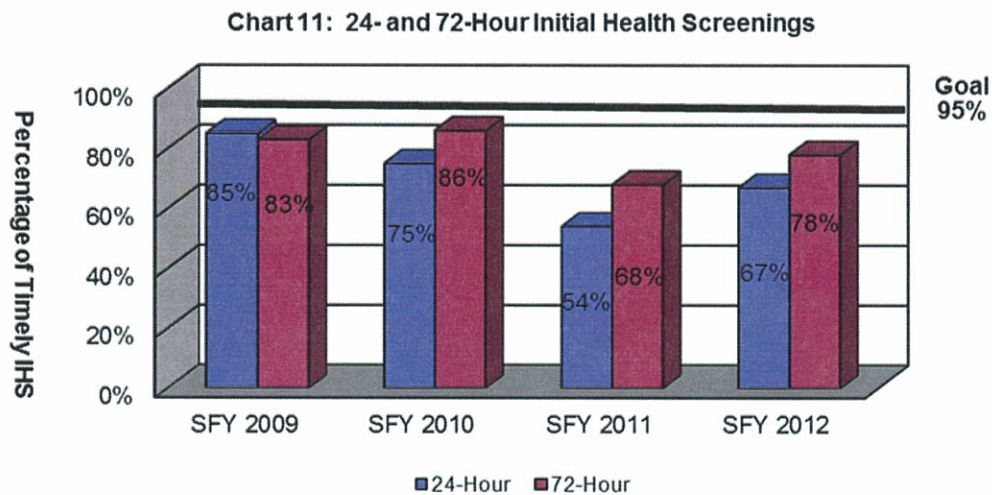
Chart 10: Timely Completion of Child Maltreatment Assessments



24- and 72-Hour Initial Health Screenings

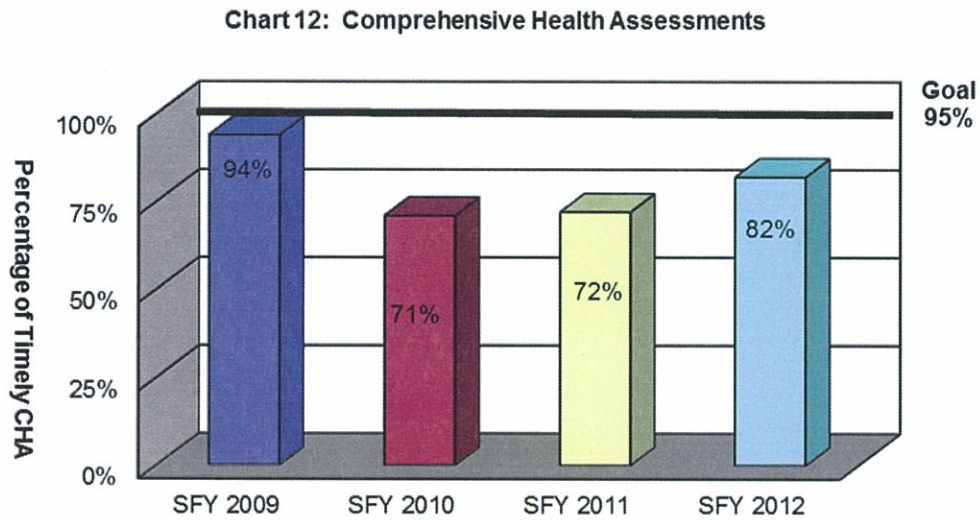
If a child enters foster care due to an allegation of severe maltreatment or if there is evidence of acute illness or injury, an initial health screening must be conducted within 24 hours of the child’s removal from the home. Of the 1,297 children who required the 24-hour health screening during SFY 2012, 875 (67%) received the screening in a timely manner. The compliance rate was 13 percentage points higher than the rate reported for SFY 2011 and below the goal of 95 percent.

All children entering foster care who do not require the initial 24-hour health screening must undergo an initial health screening within 72 hours of their removal. Of the 2,524 children who required their health screening to be completed within 72 hours, 1,966 (78%) received their screenings in a timely manner, a result which was also represents an increase in compliance.



Comprehensive Health Assessments

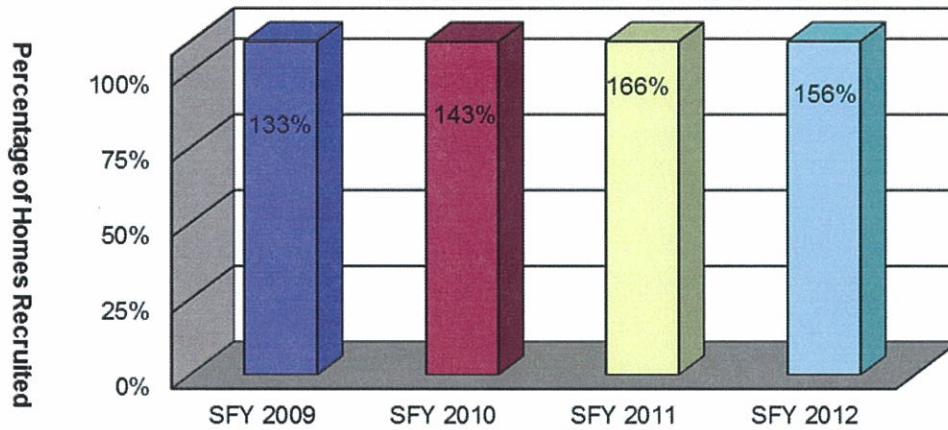
All children who enter foster care must receive a comprehensive health assessment to evaluate their physical and mental health status within 60 days of entering foster care. There were 2,249 children who entered foster care between May 2011 and May 2012 who remained in care for at least 60 days. Of those children, 1,855 received their comprehensive health assessment within 60 days of entering care. The resulting compliance rate of 82 percent represents an increase from SFY 2011 but remains below the goal of 95 percent.



Foster Home Recruitment

There were 500 new foster homes recruited during SFY 2012. This was 180 foster homes more than the goal of 320 new homes for the year. This number resulted in a compliance rate of 156 percent. During the same timeframe, however, 480 foster family homes were closed.

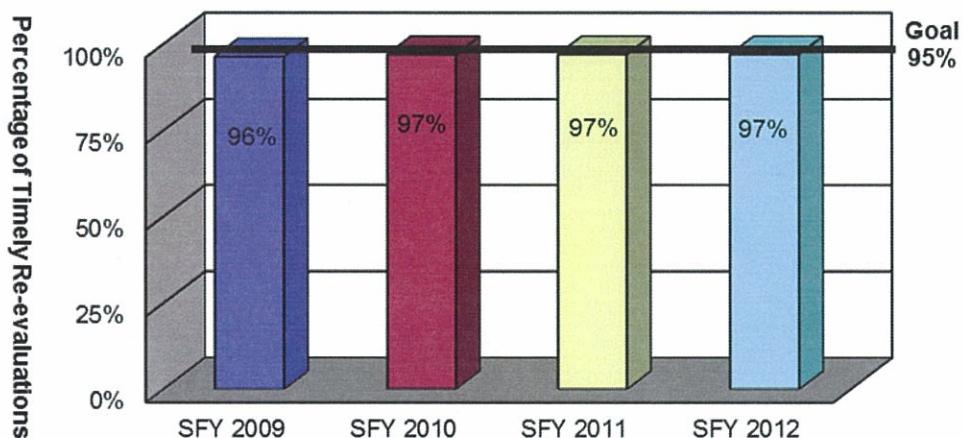
Chart 13: Foster Home Recruitment



Foster Home Re-evaluations

On an annual basis, at a minimum, DCFS is required to re-evaluate each foster home’s ability to care for its children. Of the 1,150 DCFS foster homes that were active at the end of the year, 1,113 had a recently completed re-evaluation. The resulting compliance rate was 97 percent, same as SFY 2011, and above the goal of 95 percent compliance.

Chart 14: Foster Home Re-evaluations

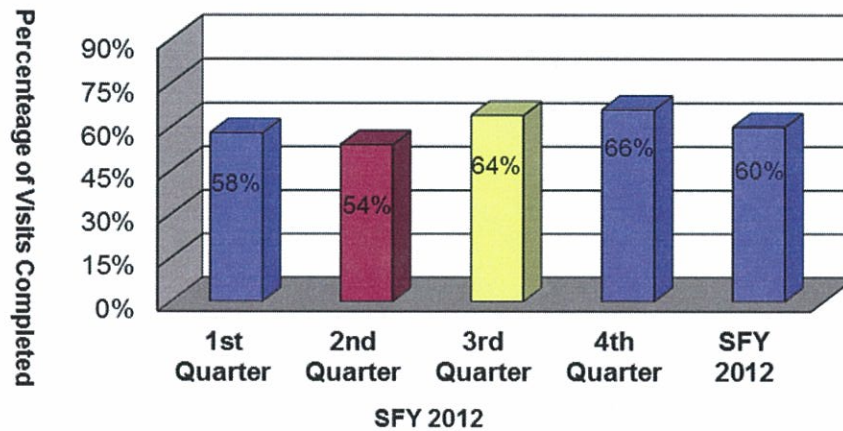


Required Visits Made by Worker

DCFS acknowledges the importance of worker contact with children in foster care and believes that these visits should be conducted face-to-face in the children’s placement setting, at least once per month.

During SFY 2012, the percentage of children who received monthly visits during the year averaged 60 percent. This signified a one percentage point increase in the percent of monthly visits completed during SFY 2011 (59%).

Chart 15: Required Foster Care Monthly Visits Made by Worker



PART III: DESCRIPTION OF POPULATION AND SERVICES

This section describes the number and status of maltreatment assessments, children who were served in foster care and children who were provided adoption services.

Section I outlines the characteristics of children, such as age, gender and ethnicity, in true maltreatment reports. Additionally, this section describes the types of allegations in maltreatment reports.

Section II describes the foster care population, specifically the characteristics of children in foster care, entries and exits of children in foster care, reasons children came into care, lengths of stay for children in foster care and relative care, placements of children in foster care and the number of placements children experience while in care.

Section III focuses on adoption data such as the characteristics of children available for adoption, current placements of those children, characteristics of children placed in adoptive homes, children whose parents have had their parental rights terminated but have not been placed in an adoptive home, finalized adoptions and adoption subsidies.

Appendix F provides an area and county breakdown for Foster Care, Protective Service and Supportive Service cases.

Part III: Description of Population and Services
Section I: True Child Maltreatment Reports

Child Maltreatment Assessments

There were 35,743 maltreatment assessments received during SFY 2012, a three percent increase from SFY 2011 (33,849). Of those, 8,030 reports (23%) were found to be true, a rate which is just below the national percentage (23.7%).⁴ There were 10,927 victim children involved in the reports determined to be true during the year. (See Appendix A for an area and county breakdown).

Table 2: Child Maltreatment Assessments

	Total Assessments	True Assessments	Percent True
SFY 2012	35,743	8,030	23%
SFY 2011	33,849	8,573	25%
SFY 2010	32,915	7,831	24%
SFY 2009	30,191	6,701	22%

	DCFS			CACD		
	Total Assessments	True Assessments	Percent True	Total Assessments	True Assessments	Percent True
SFY 2012	29,954	5,925	20%	5,789	2,105	36%
SFY 2011	27,471	5,984	22%	6,378	2,589	41%
SFY 2010	26,215	5,164	20%	6,700	2,667	40%
SFY 2009	23,801	4,138	17%	6,390	2,563	40%

⁴ Source: Child Maltreatment 2008, Reports from the States to the National Child Abuse and Neglect Data System, U.S. Department of Health and Human Services, Administration for Children and Families, Administration on Children, Youth and Families, Children’s Bureau.

Characteristics of Children in True Maltreatment Reports

As indicated above, 10,927 victim children were involved in true reports of maltreatment during SFY 2012. This number represents a seven percent decrease from the number of children involved in a true report from SFY 2011 (11,746 children).⁵

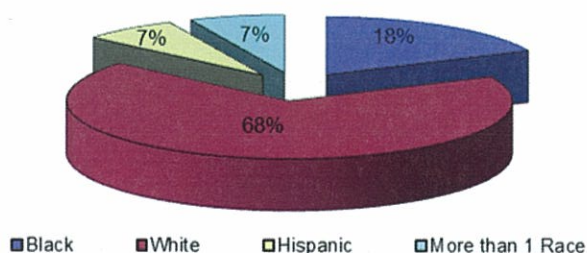
Table 3: Characteristics of Children in True Maltreatment Reports SFY 2012

Age	Gender	White	Black	Asian	AIAN	NAPI	Hispanic	More Than 1 Race	Total
0 to 1	Female	337	107	1	0	0	30	33	508
	Male	358	96	0	0	0	39	56	549
2 to 5	Female	856	237	1	1	3	118	104	1,320
	Male	952	256	2	1	11	115	123	1,460
6 to 11	Female	1,306	326	3	1	6	120	111	1,873
	Male	1,198	316	2	2	8	126	129	1,781
12 to 15	Female	931	245	5	2	5	76	70	1,334
	Male	594	127	0	1	3	45	53	823
16 to 18	Female	278	148	2	1	2	47	43	749
	Male	506	74	0	0	3	21	20	396
18+	Female	0	0	0	0	0	0	0	0
	Male	1	0	0	0	0	0	0	1
Total*		7,317	1,932	16	9	41	737	742	10,794

*Demographic information was not entered into CHRIS for 133 children.

The chart below shows that 66 percent of the children involved in true maltreatment reports were white, while 18 percent were black and seven percent were Hispanic. These are similar to the percentages from SFY 2011.

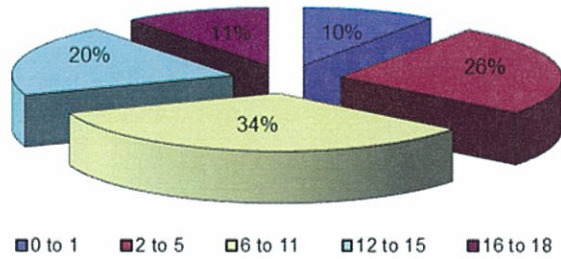
Chart 16a: Race/Ethnicity of Children in True Maltreatment Reports



⁵ The table above, and each subsequent demographic table, divides counts of children by race and ethnicity, into the following categories: "Hispanic," "More than One Race," "Asian" (includes Indonesian, Cambodian, Hmong and Vietnamese), "AIAN" (includes Native American, Alaskan Native and American Indian) and "NAPI" (includes Native Hawaiian and other Pacific Islanders).

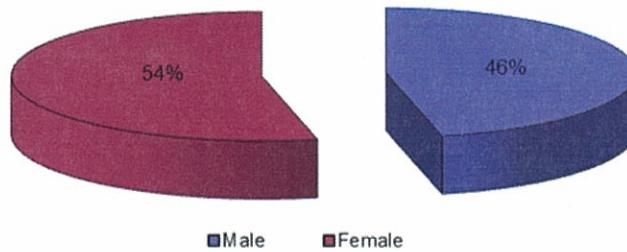
The following chart shows that children between the ages of six and 11 represented the highest percentage of children involved in true reports received during SFY 2012 (34%). These percentages are similar to those from SFY 2011.

Chart 16b: Ages of Children Involved in True Maltreatment Reports



Fifty-four percent of the children involved in true reports were female, while 46 percent were male.

Chart 16c: Gender of Children In True Maltreatment Reports



Children Involved in Allegations of True Maltreatment Reports

The majority of the 10,927 children cited in true maltreatment reports were involved in allegations of neglect (90%) during SFY 2012, followed by reports involving allegations of physical abuse (46%) and sexual abuse (28%).⁶

**Table 4: Percentage of Children Involved in True Allegations of Maltreatment
SFY 2011 – SFY 2012**

	SFY 2011		SFY 2012	
Neglect	10,439	89%	9,832	90%
Physical Abuse	5,124	44%	5,025	46%
Sexual Abuse	3,439	29%	3,076	28%

⁶ The total number represented will outnumber the total children involved in true maltreatment reports because children can be involved in more than one allegation.

Part III: Description of Population and Services
Section II: Foster Care

Characteristics of Children in Foster Care

There were 7,739 children in foster care anytime during SFY 2012, a decrease from SFY 2011 (7,959 children). This count includes children who remained in care from the previous year as well as children who came into care during SFY 2012. (See Appendices B, C and D for an area and county breakdown of demographic information.) The table below describes the characteristics of the children in foster care during the most recent state fiscal year.

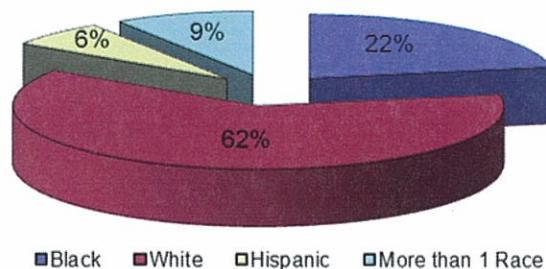
**Table 5: Characteristics of Children in Foster Care During the Year
SFY 2012**

Age	Gender	White	Black	Asian	AIAN	NAPI	Hispanic	More Than 1 Race	Total
0 to 1	Female	349	120	2	0	0	20	45	536
	Male	391	142	2	1	1	29	68	634
2 to 5	Female	667	189	1	0	0	77	109	1,043
	Male	693	222	1	1	2	80	105	1,104
6 to 11	Female	685	222	1	0	2	68	79	1,057
	Male	621	214	1	1	1	70	111	1,019
12 to 15	Female	359	136	1	0	1	35	51	583
	Male	350	119	0	3	0	37	47	556
16 to 18	Female	227	93	1	0	0	25	28	374
	Male	187	94	1	2	1	21	26	332
18+	Female	128	73	0	0	0	22	21	244
	Male	126	72	1	0	0	15	14	228
Total*		4,783	1,696	12	8	8	499	704	7,710

*Demographic information had not been entered into CHRIS for 29 children.

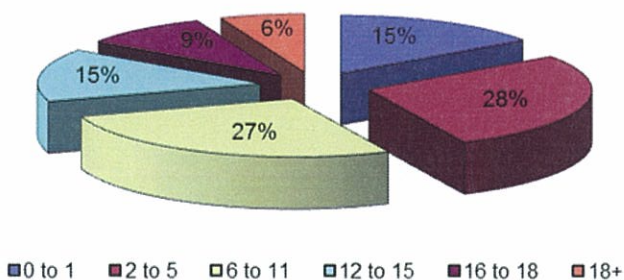
The chart below shows that 62 percent of the children in foster care during the year were white, while 22 percent of the children were black. National data reveal that only 41 percent of the children in the national foster care system were white, while 29 percent of the children were black.⁷

17a: Race/Ethnicity of Children in Care During the Year



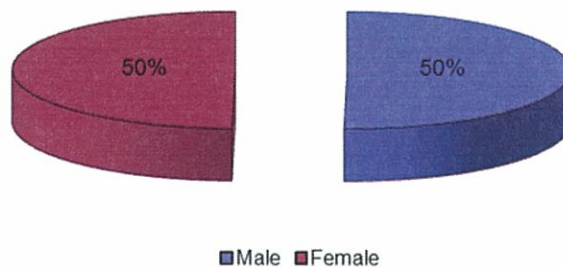
Over half of the children who were in care during the year were between the ages of two and 11 years old.

17b: Ages of Children in Care During the Year



The following chart shows the gender distribution of the children in foster care during the year. Fifty percent of the children were female and 50 percent were male.

17c: Gender of Children in Care During the Year



⁷ Adoption and Foster Care Analysis and Reporting System (AFCARS) preliminary data submitted for children in foster care between 10/1/2009 and 9/30/2010 as of October 2010.

There were 3,997 children in foster care at the end of SFY 2012, a decrease from the 4,105 children in care at the end of SFY 2011. The following table outlines the characteristics of the children in foster care at the end of the latest state fiscal year.

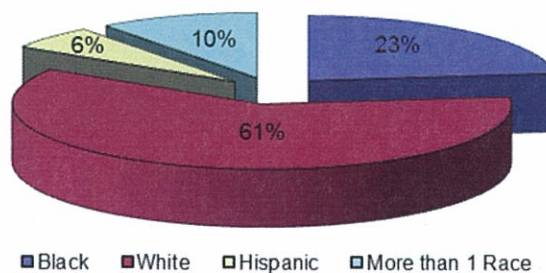
Table 6: Characteristics of Children in Foster Care at the End of the Year SFY 2012

Age	Gender	White	Black	Asian	AIAN	NAPI	Hispanic	More Than 1 Race	Total
0 to 1	Female	170	61	2	0	0	6	26	265
	Male	201	69	1	0	1	14	38	324
2 to 5	Female	304	105	0	0	0	32	54	495
	Male	317	110	0	0	0	34	53	514
6 to 11	Female	363	105	0	0	0	33	46	547
	Male	310	110	1	1	0	26	66	514
12 to 15	Female	178	78	1	0	0	22	35	314
	Male	225	73	0	1	0	15	35	349
16 to 18	Female	133	58	0	0	0	15	21	227
	Male	111	64	0	1	0	15	16	207
18+	Female	40	36	0	0	0	11	13	100
	Male	61	48	1	0	0	8	8	126
Total*		2,413	917	6	3	1	231	411	3,982

*Demographic information had not been entered into CHRIS for 15 children.

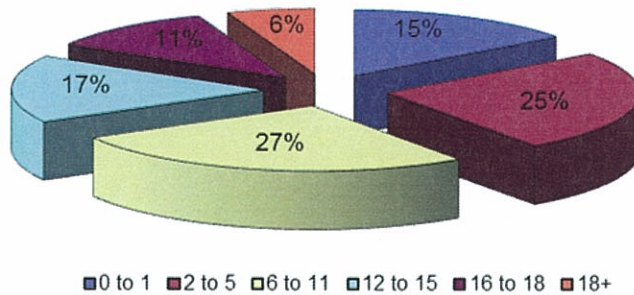
The chart below shows that 61 percent of the children in foster care at the end of the SFY 2012 were white, while 23 percent of the children were black.

18a: Race/Ethnicity of Children in Care at the End of the Year



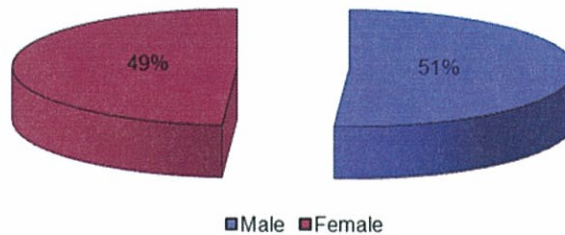
The following chart shows that children between the ages of six and 11 represented the highest percentage of children in care at the end of the year (27 percent). Children ages two to five years represented the second highest percentage of children (25%) who were in care at the end of the fiscal year.

18b: Ages of Children in Care at the End of the Year



The following chart shows the gender breakout of the children in foster care at the end of SFY 2012.

Chart 18c: Gender of Children in Care at the End of the Year



Entries into Foster Care

During SFY 2012, 3,873 children entered foster care. This represents a decrease from the number of children who entered care during the last fiscal year (4,126). The following table outlines the characteristics of the children who entered foster care during SFY 2012.

Table 7: Characteristics of Children who Entered Foster Care During the Year SFY 2012

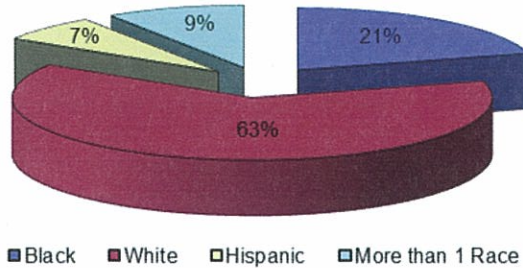
Age	Gender	White	Black	Asian	AIAN	NAPI	Hispanic	More Than 1 Race	Total
0 to 1	Female	263	85	2	0	0	17	36	403
	Male	284	97	1	1	1	26	57	467
2 to 5	Female	328	90	0	0	0	54	52	524
	Male	344	89	1	0	1	33	46	514
6 to 11	Female	348	118	0	0	3	39	39	547
	Male	304	108	2	1	1	31	53	500
12 to 15	Female	197	75	1	0	0	18	34	325
	Male	176	54	0	2	0	23	12	267
16 to 18	Female	102	42	0	0	0	9	14	167
	Male	78	35	1	1	1	9	14	139
18+	Female	0	0	0	0	0	0	0	0
	Male	0	0	0	0	0	0	0	0
Total*		2,424	793	8	5	7	259	357	3,853

*Demographic information had not been entered into CHRIS for 20 children.

The chart on the following page shows that 63 percent of the children who entered foster care during the year were white, while 21 percent of the children were black. In addition, Hispanic children made up seven percent of the children who entered foster care. National data indicate that 45 percent of the children who entered care were white, 24 percent were black, and 21 percent were Hispanic.⁸

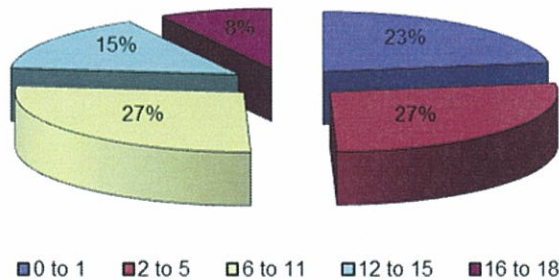
⁸ Adoption and Foster Care Analysis and Reporting System (AFCARS) preliminary data submitted for children in foster care between 10/1/2009 and 9/30/2010 as of October 2010.

Chart 19a: Race/Ethnicity of Children who Entered Care



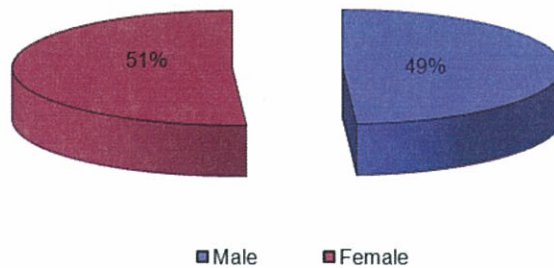
The following chart shows that 77 percent of the children who entered foster care during SFY 2012 were under the age of 12.

Chart 19b: Ages of Children who Entered Care



As shown in the following chart, fifty-one percent of the children were female and 49 percent were male. These percentages are similar to those reported for SFY 2011.

Chart 19c: Gender of Children who Entered Care

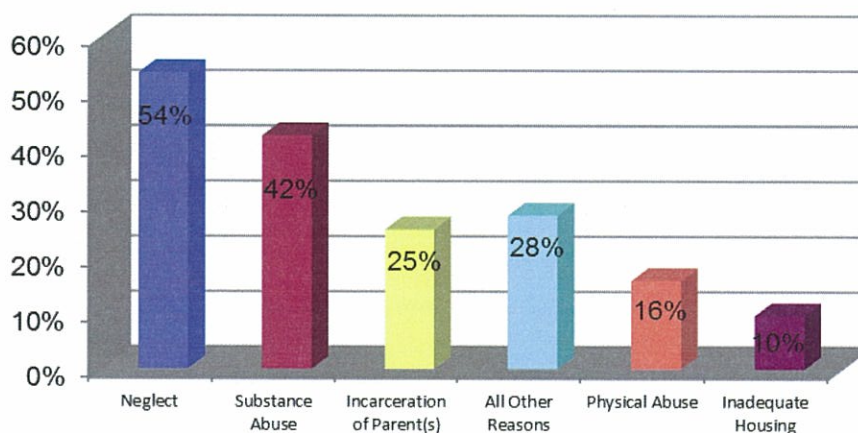


Neglect and substance abuse⁹ were the most prevalent reasons children entered foster care.

Table 8: Reasons Children Placed in Foster Care by Age During the Year SFY 2012

	0 to 1	2 to 5	6 to 11	12 to 15	16 to 18	18+	Total
Neglect	421	589	596	314	144	4	2,068
Substance Abuse	406	463	449	201	109	2	1,630
Parent Incarceration	174	289	295	152	60	3	973
Physical Abuse	119	139	182	119	55	3	617
Child's Behavior	0	0	12	72	61	3	148
Abandonment	23	26	36	50	43	2	180
Inadequate Housing	80	113	93	59	29	0	374
Caretaker Illness	49	56	72	55	36	0	268
Sexual Abuse	15	61	113	69	29	1	288
Truancy	0	0	23	26	18	0	67
Child's Disability	8	4	3	4	2	0	21
Parent Death	1	4	11	6	5	0	27
Sex Offender	0	0	10	14	2	0	26
Relinquishment	2	0	0	3	4	0	9
Teen Parent in Care	12	7	2	0	3	0	24
Other	0	0	1	8	4	1	14
Total	1,310	1,751	1,898	1,152	604	19	6,734

Chart 20: Most Prevalent Reasons Children Entered Care



⁹ Of the 1,630 instances where entry was attributed to substance abuse, substance abuse by parents 1,575 instances) accounted for the largest percentage (97%) as compared to substance abuse by children (3%).

Exits from Foster Care

There were 3,894 children who exited foster care during SFY 2012, a four percent decrease from SFY 2011 (4,071 children). The table below outlines the characteristics of the children who left foster care during SFY 2012.

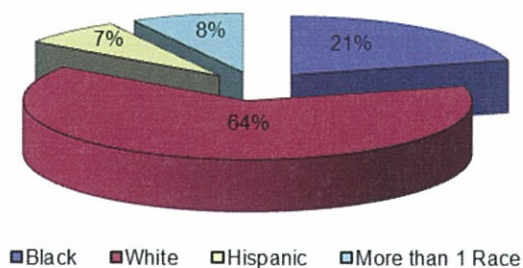
Table 9: Characteristics of Children Exiting Foster Care During the Year SFY 2012

Age	Gender	White	Black	Asian	AIAN	NAPI	Hispanic	More Than 1 Race	Total
0 to 1	Female	184	60	0	0	0	14	22	280
	Male	197	78	1	1	0	16	30	323
2 to 5	Female	380	84	1	0	0	48	61	574
	Male	386	118	1	1	2	46	55	609
6 to 11	Female	337	121	1	0	2	36	34	531
	Male	321	107	1	0	1	46	48	524
12 to 15	Female	188	60	0	0	1	16	15	280
	Male	136	45	0	2	0	23	12	218
16 to 18	Female	165	62	1	0	0	18	15	261
	Male	120	47	1	1	1	12	16	198
18+	Female	24	13	0	0	0	3	1	41
	Male	27	10	0	0	0	2	2	41
Total*		2,465	805	7	5	7	280	311	3,880

*Demographic data had not been entered into CHRIS for 14 children.

Of the 3,894 children who left foster care during the most recent state fiscal year, 64 percent were white and 21 percent were black. National data indicate that 43 percent of the children who leave foster care are white and 27 percent are black.¹⁰

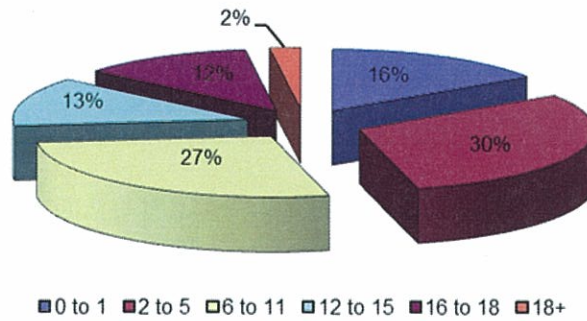
Chart 21a: Race/Ethnicity of Children who Exited Care



¹⁰ Adoption and Foster Care Analysis and Reporting System (AFCARS) preliminary data submitted for children in foster care between 10/1/2009 and 9/30/2010 as of October 2010.

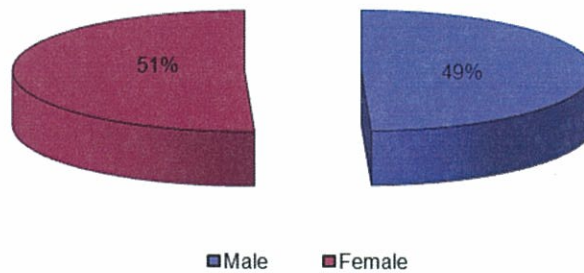
The following chart shows that children between the ages of two and five represented the highest percentage of children (30%) who exited foster care during the year, followed closely by children between the ages of six and 11 (27%).

Chart 21b: Ages of Children who Exited Care



Fifty-one percent of the children who left care during the year were female and 49 percent were male.

Chart 21c: Gender of Children who Exited Care



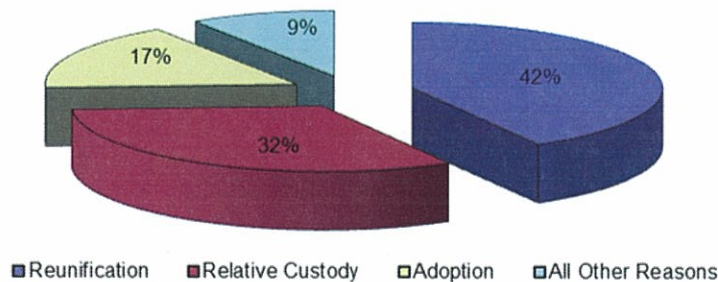
**Table 10: Reasons Children Exited Foster Care by Age
SFY 2012**

Reason	Age						Total
	0 to 1	2 to 5	6 to 11	12 to 15	16 to 18	Over 18	
Reunification	260	503	457	242	152	0	1,614
Relative Custody	203	370	407	168	112	0	1,260
Adoption	114	289	167	61	12	0	643
Child Aged Out	0	0	0	0	155	76	231
Non-Relative Custody	18	18	20	25	20	4	105
Emancipation	0	0	0	0	4	0	4
Death of Child	4	0	0	0	1	0	5
Custody Transfer	1	2	4	2	3	2	14
Tribal Jurisdiction	3	1	0	0	0	0	4
Total	603	1,183	1,055	498	459	82	3,880

*Demographic data had not been entered into CHRIS for 14 children.

The most prevalent reason children left foster care during SFY 2012 was reunification. Approximately two-fifths (42%) of the children exiting care reunified with their families; the result was the same in comparison to SFY 2011 (42%). The second most prevalent reason was relative custody (32%), which experienced a two percentage point decrease from SFY 2011 (34%). Seventeen percent of the children left foster care to adoption. National data indicate that the three most prevalent reasons children exit care are reunification (52%), adoption (19%) and relative care (8%).¹²

Chart 22: Most Prevalent Reasons for Children Exiting Care



¹² Adoption and Foster Care Analysis and Reporting System (AFCARS) preliminary data submitted for children in foster care between 10/1/2007 and 9/30/2008 as of October 2009.

Permanency Goals of Children in Foster Care

The Division maintains two primary goals for children in foster care: safety and permanency. The second of these concerns is expressed by setting a permanency goal for each child in foster care within 30 days of the child entering care. Of the 3,997 children in foster care at the end of the fiscal year, 3,732 children had been in care for at least 30 days. Reunification (return home) remained the most prevalent goal among the children in foster care at 53 percent.

**Table 11: Permanency Goals of Children in Foster Care
SFY 2012**

	SFY 2012		National ¹³
Return Home	1,969	53%	49%
Adoption	944	25%	24%
APPLA	504	14%	N/A
Relative Care	120	3%	4%
Guardianship	48	1%	4%
Emancipation	0	0%	6%
Long Term Care	0	0%	8%
Not Yet Established	147	4%	5%
Total	3,732	100%	100%

¹³ Adoption and Foster Care Analysis and Reporting System (AFCARS) preliminary data submitted for children in foster care between 10/1/2007 and 9/30/2008 as of October 2009.

Length of Stay of Children in Foster Care

For SFY 2012, 59 percent of the children in foster care were in care less than one year. The percentage of children in care for less than a year is slightly lower for those in relative care (57%). Compared to national data, children in the Arkansas foster care system stay in care a substantially shorter amount of time.¹⁴ (See Appendix E for an area and county breakdown.)

**Table 12: Length of Stay of Children in Foster Care
SFY 2012**

	Number	Percentage*	National
Less than 30 days	1,078	14%	5%
30-90 Days	1,052	14%	20%
3-6 Months	949	12%	
6-12 Months	1,442	19%	17%
12-24 Months	1,655	21%	23%
24-36 Months	709	9%	12%
36+ Months	854	11%	24%
Total*	7,739	100%	100%

**Table 13: Length of Stay of Children in Relative Care
SFY 2012**

	Number	Percentage
Less than 30 days	43	3%
30-90 Days	156	12%
3-6 Months	202	15%
6-12 Months	361	27%
12-24 Months	411	30%
24-36 Months	128	10%
36+ Months	47	3%
Total	1,348	100%

¹⁴ Adoption and Foster Care Analysis and Reporting System (AFCARS) preliminary data submitted for children in foster care between 10/1/2007 and 9/30/2008 as of October 2009.

Number of Placements of Children in Foster Care

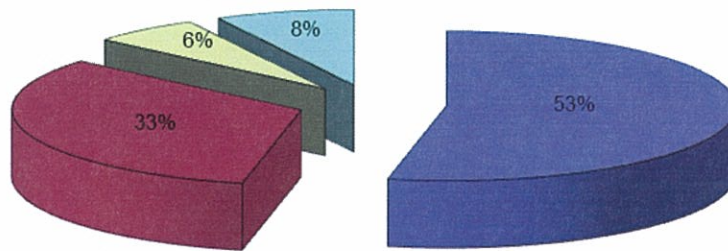
Overall, 53 percent of the children in care at the end of SFY 2012 experienced two or fewer placements. The result is similar to that of the previous SFY. It is not surprising that the likelihood of multiple placements increases the longer children remain in foster care.

**Table 14: Number of Placements of Children in Foster Care
SFY 2012**

	Children in FC Less Than 12 Months		Children in FC 12 and 24 Months		Children in FC More Than 24 Months		Total	
	Count	Percentage	Count	Percentage	Count	Percentage	Count	Percentage
1-2 Placements	1,556	74%	401	43%	172	18%	2,129	53%
3-6 Placements	520	25%	439	47%	357	37%	1,316	33%
7-9 Placements	19	1%	59	6%	163	17%	241	6%
10+ Placements	2	0%	29	3%	280	29%	311	8%
Total*	2,097	100%	928	100%	972	100%	3,997	100%

*Sum of individual percentages may not equal 100% due to rounding.

Chart 23: Number of Placements



■ 1 to 2 Placements ■ 3 to 6 Placements ■ 7 to 9 Placements ■ 10+ Placements

Characteristics of Children who Experienced Three or More Placements

As noted previously, there were 3,997 children in care at the end of the year. Of those, 1,868 (47%) children experienced three or more placements while in foster care.

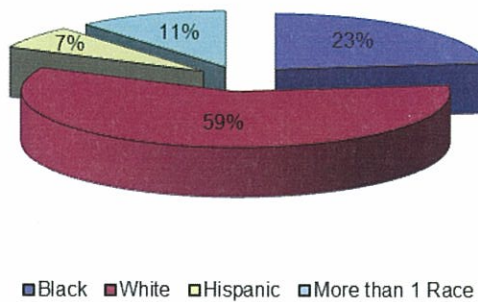
Table 15: Characteristics of Children who Experienced Three or More Placements SFY 2012

Age	Gender	White	Black	Asian	AIAN	NAPI	Hispanic	More Than 1 Race	Total
0 to 1	Female	41	15	0	0	0	3	8	67
	Male	59	26	0	0	0	7	12	104
2 to 5	Female	109	29	0	0	0	12	20	170
	Male	127	33	0	0	0	13	25	198
6 to 11	Female	158	38	0	0	0	19	22	237
	Male	179	53	0	1	0	15	46	294
12 to 15	Female	107	49	0	0	0	16	24	196
	Male	152	63	0	1	0	15	27	258
16 to 18	Female	74	41	0	0	0	10	10	135
	Male	76	71	1	1	0	11	12	172
18+	Female	4	6	0	0	0	3	4	17
	Male	12	4	0	0	0	0	1	17
Total		1,098	428	1	3	0	124	211	1,865

*Demographic data had not been entered into CHRIS for three children.

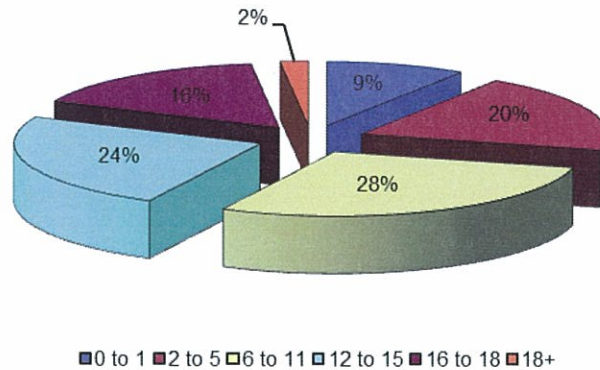
Of the children who experienced three or more placements, 59 percent were white and 23 percent were black.

Chart 24a: Race/Ethnicity of Children Who Experienced Three or More Placements



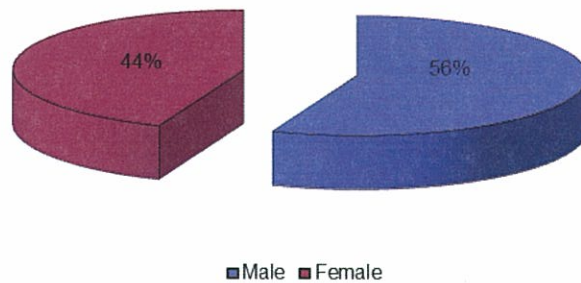
The largest group of children who experienced three or more placements was between the ages of six and 11 (28%), followed by children ages 12 to 15 (24%).

Chart 24b: Ages of Children who Experienced Three or More Placements



More male children (56%) than female children (44%) experienced three or more placements while in care.

Chart 24c: Gender of Children Who Experienced Three or More Placements



Current Placement of Children in Foster Care

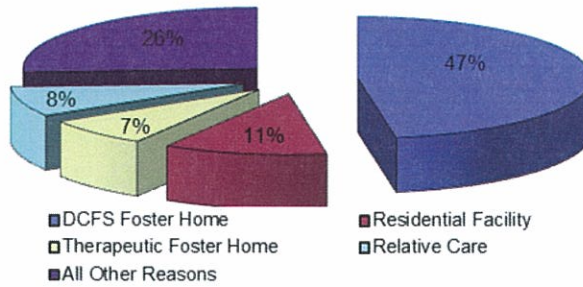
More children who remained in foster care at the end of SFY 2012 were placed in foster homes. Forty-seven percent of the children were in DCFS foster homes. Aside from family foster homes, the most common placement options for children residing in care were residential facilities (11%), and therapeutic foster homes and provisional relative care (7% each).

**Table 16: Current Placement of Children in Foster Care
SFY 2012**

Placement	Age						Total
	0 to 1	2 to 5	6 to 11	12 to 15	16 to 18	Over 19	
DCFS Foster Home (None-Relative)	385	520	369	161	107	34	1,576
DCFS Foster Home (Relative)	33	117	98	41	20	8	317
Therapeutic Foster Home	6	37	150	68	28	5	294
Pre-Adoptive Home (Non-Relative)	39	73	49	13	2	0	176
Pre-Adoptive Home (Relative)	2	7	10	2	0	0	21
Emergency Shelter	6	26	67	41	22	0	162
Residential Facility	11	49	91	135	113	54	453
Youth Services	0	0	0	3	10	6	19
Runaway	0	0	0	5	15	2	22
Trial Home Visit	30	69	66	28	18	0	211
Hospital/Medical	6	1	6	6	12	1	32
SRP Residential Treatment	0	0	0	5	11	3	19
Incarceration	0	0	0	6	12	4	22
SRP CRT	0	0	2	8	3	1	14
Acute CRT	0	0	6	11	11	1	29
Sub-Acute CRT	0	0	27	65	29	3	124
Independent Living	0	1	0	0	4	95	100
Temporary Placement	12	16	28	21	4	1	82
SRP Therapeutic Foster Care	0	0	0	7	3	2	12
Private Agency FFH	13	5	0	0	0	0	18
DDS Placement	0	0	1	3	3	4	11
DDS Service	0	0	2	5	0	0	7
Provisional Relative	51	91	92	30	4	1	269
DYS After Care	0	0	0	0	0	1	1
Unknown*	0	0	2	1	2	1	6
Total	594	1,012	1,066	665	434	226	3,997

*Unknown due to data entry after report completion.

Chart 25: Current Placement of Children in Care



Characteristics of Children on Runaway Status at the End of the Year

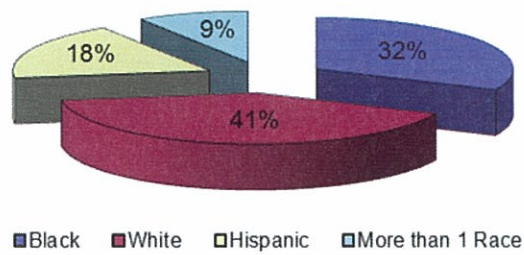
For SFY 2012, 22 children were in runaway status at the end of the year. This was a decrease of 24 children from the end of SFY 2011 (46).

Table 17: Characteristics of Children on Runaway Status at the End of the Year SFY 2012

Age	Gender	White	Black	Asian	AIAN	NAPI	Hispanic	More Than 1 Race	Total
0 to 1	Female	0	0	0	0	0	0	0	0
	Male	0	0	0	0	0	0	0	0
2 to 5	Female	0	0	0	0	0	0	0	0
	Male	0	0	0	0	0	0	0	0
6 to 11	Female	0	0	0	0	0	0	0	0
	Male	0	0	0	0	0	0	0	0
12 to 15	Female	1	1	0	0	0	0	0	2
	Male	1	1	0	0	0	0	1	3
16 to 18	Female	2	1	0	0	0	3	0	6
	Male	4	4	0	0	0	0	1	9
18+	Female	0	0	0	0	0	0	0	0
	Male	1	0	0	0	0	1	0	2
Total		9	7	0	0	0	4	2	22

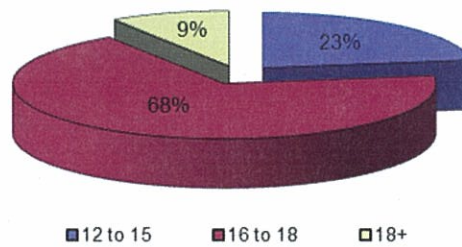
Of the children on runaway status at the end of the year, 41 percent were white and 32 percent were black.

Chart 26a: Race/Ethnicity of Children on Runaway Status at the End of the Quarter



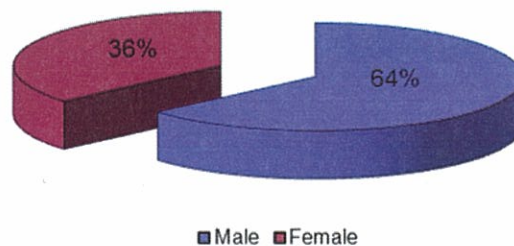
Sixty-eight percent of the children who were on runaway status at the end of the year were between the ages of 16 and 18.

Chart 26b: Ages of Children on Runaway Status at the End of the Quarter



More male children (64%) than female children (36%) were on runaway status at the end of the year.

Chart 26c: Gender of Children on Runaway Status at the End of the Quarter



Characteristics of Children in Relative Care

There were 1,348 children who were in relative care anytime during SFY 2012. The table below outlines the demographics of those children.

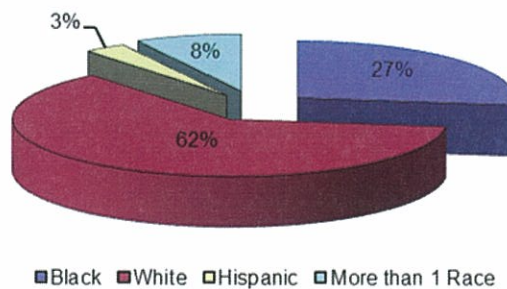
**Table 18: Characteristics of Children in Relative Care
SFY 2012**

Age	Gender	White	Black	Asian	AIAN	NAPI	Hispanic	More Than 1 Race	Total
0 to 1	Female	63	21	0	0	0	1	8	93
	Male	71	33	0	0	0	1	12	117
2 to 5	Female	155	57	0	0	0	6	23	241
	Male	145	61	0	0	0	5	21	232
6 to 11	Female	144	64	0	0	0	5	9	222
	Male	126	59	0	0	0	8	15	208
12 to 15	Female	52	21	0	0	0	4	7	84
	Male	39	18	0	0	0	3	5	65
16 to 18	Female	26	11	0	0	0	4	3	44
	Male	12	15	0	0	0	4	3	34
18 +	Female	1	2	0	0	0	0	0	3
	Male	1	1	0	0	0	0	0	2
Total		835	363	0	0	0	41	106	1,345

*Demographic data had not been entered into CHRIS for three children.

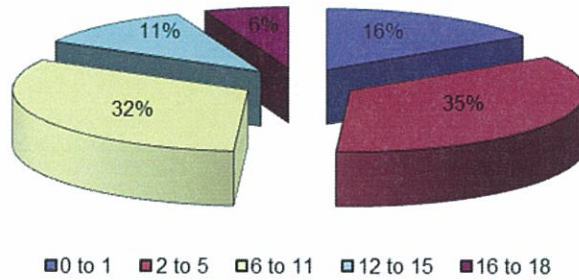
White children represented the highest percentage of children (62%) in relative care during SFY 2012, roughly similar to the percentage reported for SFY 2011 (64%). Meanwhile, black children represented 27 percent, also similar to SFY 2011 (26%).

Chart 27a: Race/Ethnicity of Children in Relative Care



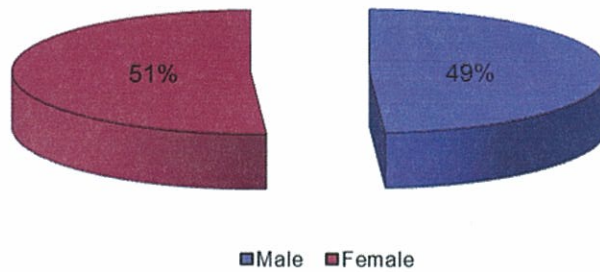
Children between the ages of two and five represented the largest age group of children in relative care (35%), followed by children between the ages of six and 11 (32%).

Chart 27b: Ages of Children in Relative Care



Of the children who were in relative care during the year, 49 percent were male and 51 percent were female.

Chart 27c: Gender of Children in Relative Care



Part III: Description of Population and Services
Section III: Adoption

Characteristics of Children with the Permanency Goal of Adoption at the End of the Year

There were 944 children in care at the end of SFY 2012 whose permanency goal was adoption. This was an increase from SFY 2011 (777). The following table outlines the characteristics of those children.

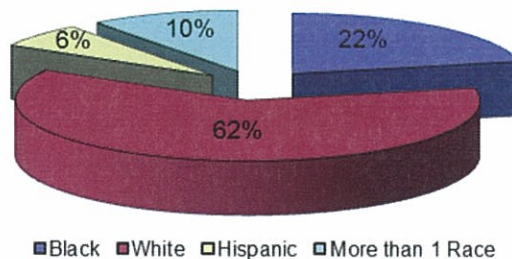
Table 19: Characteristics of Children with the Permanency Goal of Adoption at the End of the Year SFY 2012

Age	Gender	White	Black	Asian	AIAN	NAPI	Hispanic	More Than 1 Race	Total
0 to 1	Female	27	11	0	0	0	0	3	41
	Male	29	8	0	0	1	2	9	49
2 to 5	Female	77	23	0	0	0	5	14	119
	Male	74	20	0	0	0	10	13	117
6 to 11	Female	109	26	0	0	0	11	13	159
	Male	111	43	0	0	0	6	19	179
12 to 15	Female	52	24	0	0	0	5	7	88
	Male	68	23	0	0	0	10	13	114
16 to 18	Female	17	16	0	0	0	6	3	42
	Male	12	7	0	0	0	5	3	27
18 +	Female	3	0	0	0	0	0	0	3
	Male	0	2	0	0	0	0	0	2
Total		579	203	0	0	1	60	97	940

*Demographic data had not been entered into CHRIS for four children.

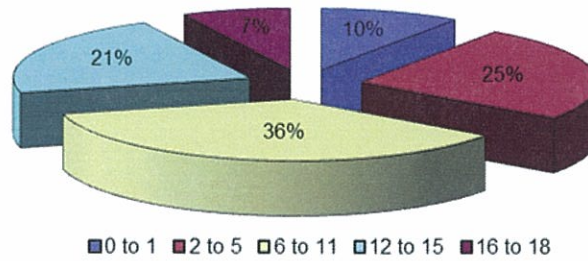
Sixty-two percent of the children with the permanency goal of adoption were white, 22 percent were black, and ten percent were multiracial.

Chart 28a: Race/Ethnicity of Children with a Permanency Goal of Adoption During the Year



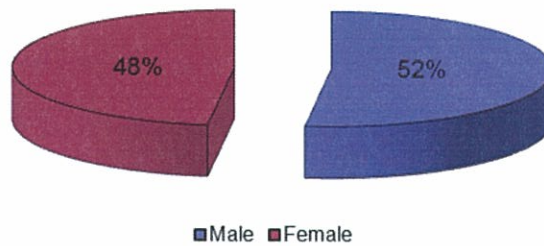
Children between the ages of six and 11 represented the largest group of children with the permanency goal of adoption who were in care at the end of the year (36%). Children ages two and five represented the second largest group of such children (25%), followed closely by those between 12 to 15 (21%).

Chart 28b: Ages of Children with a Permanency Goal of Adoption During the Year



More male children (52%) than female children (48%) who were in care at the end of the state fiscal year had a permanency goal of adoption.

Chart 28c: Gender of Children with a Permanency Goal of Adoption During the Year



Characteristics of Children whose Parents had their Parental Rights Terminated During the Year

There were 540 children whose parents had their parental rights terminated as of the end of SFY 2012. The table below outlines the characteristics of those children.

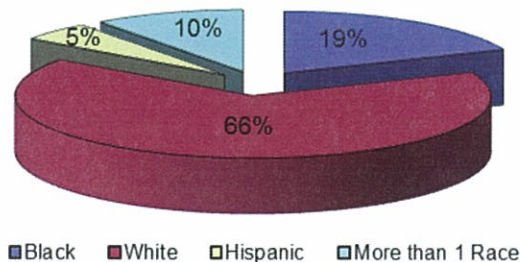
Table 20: Characteristics of Children whose Parents have had Parental Rights Terminated as of the End of the Year SFY 2012

Age	Gender	White	Black	Asian	AIAN	NAPI	Hispanic	More Than 1 Race	Total
0 to 1	Female	7	1	0	0	0	0	1	9
	Male	4	1	0	0	0	0	3	8
2 to 5	Female	37	2	0	0	0	2	3	44
	Male	36	6	0	0	0	4	5	51
6 to 11	Female	59	8	0	0	0	5	7	79
	Male	73	22	0	0	0	3	9	107
12 to 15	Female	34	13	0	0	0	3	6	56
	Male	52	19	0	0	0	6	11	88
16 to 18	Female	21	11	0	0	0	1	4	37
	Male	23	10	0	0	0	1	4	38
18+	Female	2	2	0	0	0	1	1	6
	Male	8	5	1	0	0	0	1	15
Total		356	100	1	0	0	26	55	538

*Demographic data had not been entered into CHRIS for two children.

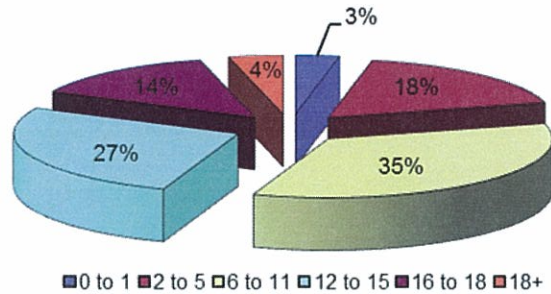
Sixty-six percent of the children whose parents had their parental rights terminated during SFY 2012 were white, while 19 percent of the children were black and five percent were Hispanic.

Chart 29a: Race/Ethnicity of Children whose Parents have had Parental Rights Terminated During the Year



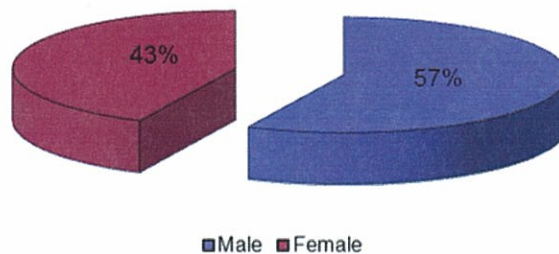
The largest group of children whose parents had their parental rights terminated during SFY 2012 was between the ages of six and eleven (35%).

Chart 29b: Ages of Children whose Parents have had Parental Rights Terminated During the Year



There were more male children (57%) than female children (43%) whose parents' parental rights were terminated as of the end of SFY 2012.

Chart 29c: Gender of Children whose Parents have had Parental Rights Terminated During the Year



Characteristics of Children Available for Adoption at the End of the Year

There were 444 children available for adoption at the end of SFY 2012.

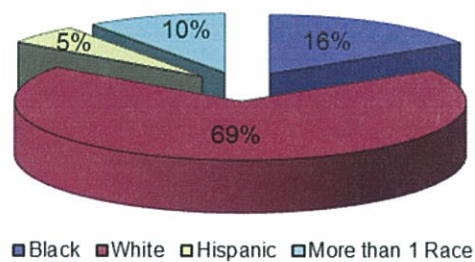
**Table 21: Characteristics of Children Available for Adoption at the End of the Year
SFY 2012**

Age	Gender	White	Black	Asian	AIAN	NAPI	Hispanic	More Than 1 Race	Total
0 to 1	Female	7	0	0	0	0	0	1	8
	Male	4	1	0	0	0	0	3	8
2 to 5	Female	34	2	0	0	0	2	3	41
	Male	32	3	0	0	0	4	4	43
6 to 11	Female	56	8	0	0	0	5	7	76
	Male	72	21	0	0	0	3	8	104
12 to 15	Female	32	12	0	0	0	2	4	50
	Male	46	15	0	0	0	6	10	77
16 to 18	Female	11	6	0	0	0	1	2	20
	Male	10	3	0	0	0	0	2	15
Total		304	71	0	0	0	23	44	442

*Demographic data had not been entered into CHRIS for two children.

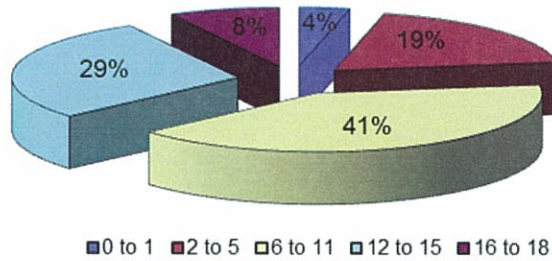
Sixty-nine percent of the children available for adoption at the end of SFY 2012 were white, while 16 percent of the children were black and five percent were Hispanic.

Chart 30a: Race/Ethnicity of Children Available for Adoption at the End of the Year



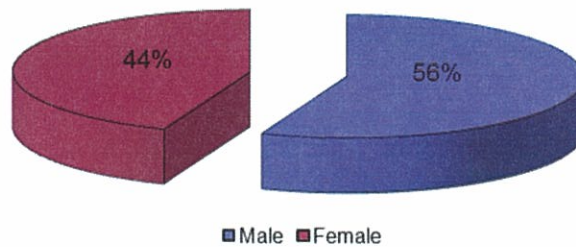
More children between the ages of six and 11 (41%) were available for adoption at the end of SFY 2012 than any other group of children.

Chart 30b: Age of Children Available for Adoption at the End of the Year



More male children (56%) than female children (44%) were available for adoption at the end of the fiscal year.

Chart 30c: Gender of Children Available for Adoption at the End of the Year



Current Placement of Children Available for Adoption

The most common placement setting for children available for adoption at the end of SFY 2012 was a DCFS foster home (31%).

**Table 22: Current Placement of Children Available for Adoption
SFY 2012**

Placement	Number of Children	Percentage
DCFS Foster Home	137	31%
Pre-Adoptive Home	84	19%
Therapeutic Foster Home	104	23%
Residential Facility	64	14%
Hospital/Medical	4	1%
Emergency Shelter	4	1%
Sub-Acute CRT	25	6%
SRP CRT	3	0.7%
SRP Therapeutic Foster Care	3	0.7%
SRP Residential Treatment	1	0.2%
Temporary Placement	4	1%
Incarceration	2	0.5%
Acute CRT	3	0.7%
DDS Service	3	0.7%
DDS Supportive Living	1	0.2%
DYS After Care	1	0.2%
Independent Living	1	0.2%
Total*	444	100%

*Sum of individual percentages may not equal 100% due to rounding.

Characteristics of Children Placed in Pre-adoptive Homes

There were 513 children placed into pre-adoptive homes during SFY 2012. This number represented a 19 percent increase from the 430 children placed in pre-adoptive homes during SFY 2011. The characteristics of the children placed during the latest state fiscal year are outlined in the table below.

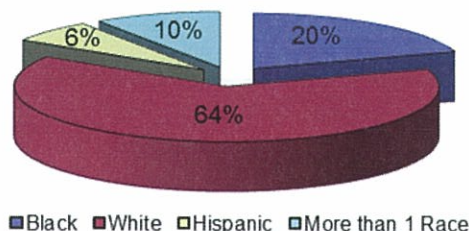
**Table 23: Characteristics of Children Placed in Pre-adoptive Homes
SFY 2012**

Age	Gender	White	Black	Asian	AIAN	NAPI	Hispanic	More Than 1 Race	Total
0 to 1	Female	26	7	0	0	0	1	3	37
	Male	29	9	1	0	0	1	6	46
2 to 5	Female	65	18	1	0	0	3	12	99
	Male	73	25	0	0	0	8	9	115
6 to 11	Female	57	14	0	0	0	5	6	82
	Male	38	11	0	0	0	11	9	69
12 to 15	Female	24	7	0	0	0	4	1	36
	Male	9	8	0	0	0	0	2	19
16 to 18	Female	2	1	0	0	0	0	1	4
	Male	3	1	0	0	0	0	0	4
Total		326	101	2	0	0	33	49	511

*Demographic data had not been entered into CHRIS for two children.

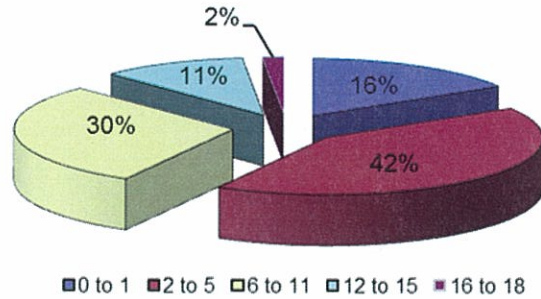
Of the 513 children placed into a pre-adoptive home during the year, 64 percent were white and 20 percent were black.

Chart 31a: Race/Ethnicity of Children Placed in Pre-Adoptive Homes During the Year



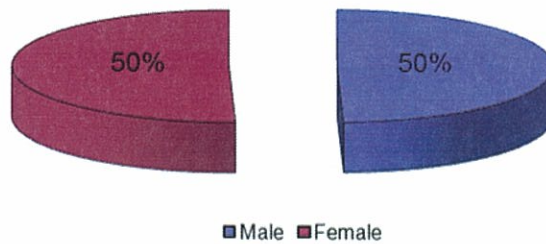
The largest group of children placed into a pre-adoptive home was between the ages of two and five (42%), followed by children between the ages of six and 11 (30%).

31b: Ages of Children Placed in Pre-Adoptive Homes During the Year



Of the children placed into a pre-adoptive home during SFY 2012, 50 percent were male and 50 percent were female.

31c: Gender of Children Placed in Pre-Adoptive Homes During the Year



Children not Placed in Pre-adoptive Homes who are Available for Adoption

At the end of the SFY 2012, there were 360 children who were available for adoption but who were not placed in pre-adoptive homes, an increase from SFY 2011 (303). This statistic was derived by subtracting the number of children placed in pre-adoptive homes at the end of the SFY (84)¹⁵ from the number of children available for adoption at the end of the year (444).

Special Needs

There were 297 children with special needs who were placed in a pre-adoptive home during SFY 2012.¹⁶ Children with special needs are generally defined as Caucasian children over the age of nine, African American children who are two years of age or older, or children who are members of a sibling group. Children may fall into more than one category. The definition of special needs children also includes those who have severe medical or psychological needs that require ongoing treatment; data are not available for this last category.

**Table 24: Children with Special Needs Placed in Pre-adoptive Homes
SFY 2012**

Special Need Condition	Number of Children
Race/Ethnicity	297
Age	254
Member of Sibling Group	169

¹⁵ Although only 84 children are identified as residing in pre-adoptive homes as of the end of the year, many more are in the process of being adopted by their foster family homes.

¹⁶ This number does not take into account children with severe medical and psychological needs because this data is not available in CHRIS (AR Children’s Reporting and Information System). As enhancements are made to the data system to capture this information, the data will be provided in future reports.

Characteristics of Children with Finalized Adoptions

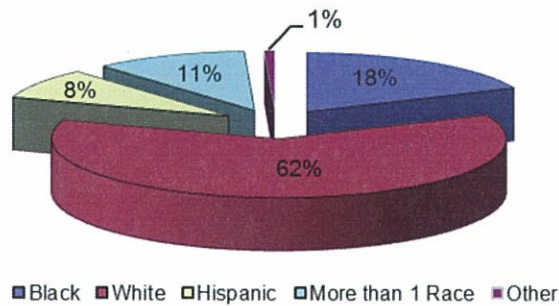
There were 674 children whose adoption was finalized during SFY 2012. This represented an increase from SFY 2011 (583). The characteristics of those children are outlined in the following table.

**Table 25: Characteristics of Children with Finalized Adoptions
SFY 2012**

Age	Gender	White	Black	Asian	AIAN	NAPI	Hispanic	More Than 1 Race	Total
0 to 1	Female	33	13	0	1	0	3	5	55
	Male	38	11	1	0	1	4	11	66
2 to 5	Female	75	26	0	1	0	10	21	133
	Male	105	29	0	0	0	12	18	164
6 to 11	Female	63	18	0	0	0	6	8	95
	Male	53	9	0	0	0	16	7	85
12 to 15	Female	27	8	0	0	1	3	2	41
	Male	13	7	0	0	0	2	0	22
16 to 18	Female	6	1	0	0	0	0	1	8
	Male	4	1	0	0	0	0	0	5
Total		417	123	1	2	2	56	73	674

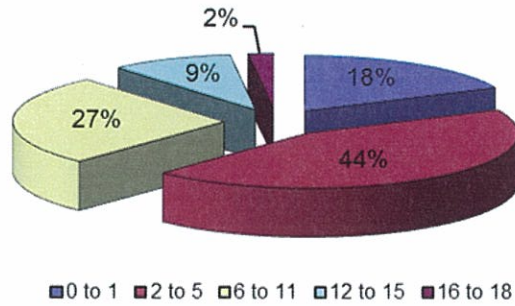
Of the children whose adoptions were finalized during SFY 2012, 62 percent were white, 18 percent were black and eight percent were Hispanic.

32a: Race/Ethnicity of Children with Finalized Adoptions During the Year



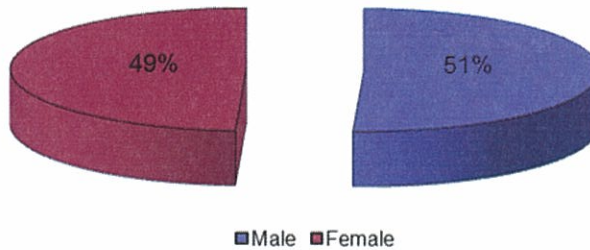
Children between the ages of two and five represent the largest group of children (44%) whose adoption was finalized during SFY 2012, followed by children between the ages of six and 11 (27%).

Chart 32b: Ages of Children with Finalized Adoptions During the Year



The gender distribution for children whose adoption was finalized during SFY 2012 was 51 percent male and 49 percent female.

Chart 32c: Gender of Children with Finalized Adoptions During the Year



Subsidized Adoptions

There were 593 children who began receiving adoption subsidies during SFY 2012. Of those, 463 children were receiving federally-funded subsidies, while 130 were receiving state-funded subsidies. In SFY 2011, 491 children received adoption subsidies, which consisted of 418 federally-funded subsidies and 73 state-funded subsidies.

Characteristics of Children who Receive Adoption Subsidies

In total, 4,979 children received adoption subsidies during SFY 2012. This was an increase of 11 percent from SFY 2011 (4,505). The following table outlines the characteristics of the children in receipt of subsidy payments for the current state fiscal year.

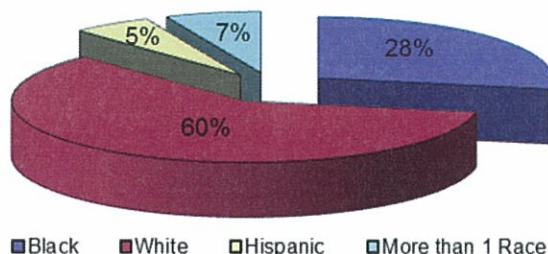
**Table 26: Characteristics of Children Receiving Adoption Subsidies
SFY 2012**

Age	Gender	White	Black	Asian	AIAN	NAPI	Hispanic	More Than 1 Race	Total
0 to 1	Female	19	10	0	0	0	2	3	34
	Male	29	8	0	0	1	1	10	49
2 to 5	Female	284	106	0	4	0	30	54	478
	Male	315	126	2	0	0	36	48	527
6 to 11	Female	538	243	3	1	0	56	73	914
	Male	554	244	4	3	1	71	59	936
12 to 15	Female	365	199	1	3	1	26	35	630
	Male	357	167	0	0	1	30	16	571
16 to 18	Female	150	81	1	1	0	10	9	252
	Male	165	87	0	1	0	3	9	265
18+	Female	90	57	0	0	0	7	5	159
	Male	103	44	0	0	0	0	5	152
Total*		2,969	1,372	11	13	4	272	326	4,967

*Demographic data had not been entered into CHRIS for 12 children.

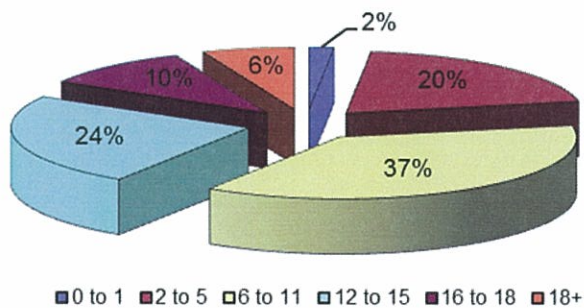
Sixty percent of the children who received an adoption subsidy during the year were white, while 28 percent were black.

33a: Race/Ethnicity of Children Receiving Adoption Subsidies During the Year



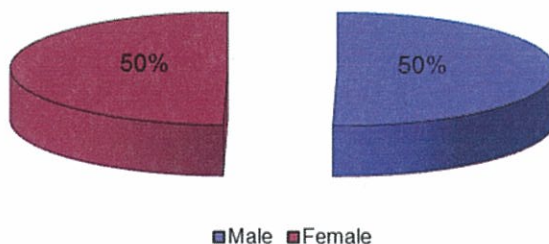
Children between the ages of six and 11 represent the largest group (37%) of children receiving an adoption subsidy.

33b: Ages of Children Receiving Adoption Subsidies During the Year



Fifty percent of the children receiving an adoption subsidy during the year were male and 50 percent were female.

33c: Gender of Children Receiving Adoption Subsidies During the Year



APPENDICES

APPENDIX A: Child Maltreatment Assessments by Area and County

Area	County	Total	TRUE	True %	Unsub*	Exempt Prenatal	Exempt Religion	Exempt UJO	UTL	Unknown
1	Benton (Bentonville)	2428	411	16.93%	1833	20	0	29	84	51
1	Carroll (Berryville)	367	57	15.53%	267	5	0	0	37	1
1	Madison (Huntsville)	196	33	16.84%	145	1	0	3	10	4
1	Washington (Fayetteville)	2697	708	26.25%	1732	23	0	36	161	37
	Area Total	5,688	1,209	21.26%	3,977	49	0	68	292	93
2	Crawford (Van Buren)	923	168	18.20%	661	18	1	6	25	44
2	Franklin (Ozark)	260	65	25.00%	183	2	0	3	3	4
2	Johnson (Clarksville)	408	98	24.02%	249	4	0	1	14	42
2	Logan (Booneville)	159	44	27.67%	99	2	0	1	13	0
2	Logan (Paris)	128	34	26.56%	86	2	0	1	4	1
2	Scott (Waldron)	188	39	20.74%	129	5	0	2	8	5
2	Sebastian (Fort Smith)	1807	364	20.14%	1135	33	0	13	73	189
2	Yell (Danville)	289	62	21.45%	207	2	0	3	11	4
	Area Total	4,162	874	21.00%	2,749	68	1	30	151	289
3	Clark (Arkadelphia)	284	35	12.32%	224	3	0	7	10	5
3	Garland (Hot Springs)	1223	182	14.88%	897	29	0	25	76	14
3	Hot Spring (Malvern)	478	99	20.71%	335	8	0	8	7	21
3	Howard (Nashville)	154	22	14.29%	125	1	0	1	5	0
3	Montgomery (Mount Ida)	94	21	22.34%	70	2	0	1	0	0
3	Perry (Perryville)	121	22	18.18%	86	1	0	2	7	3
3	Pike (Murfreesboro)	111	23	20.72%	79	2	0	0	5	2
3	Folk (Mena)	257	56	21.79%	188	6	0	2	5	0
3	Saline (Benton)	1115	154	13.81%	887	16	0	13	29	16
	Area Total	3,837	614	16.00%	2,891	68	0	59	144	61
4	Columbia (Magnolia)	196	51	26.02%	127	4	0	5	7	2
4	Hempstead (Hope)	274	54	19.71%	187	3	0	4	24	2
4	Lafayette (Lewistown)	79	18	22.78%	55	0	0	0	5	1
4	Little River (Ashdown)	134	33	24.63%	75	2	0	1	21	2
4	Miller (Texarkana)	566	116	20.49%	347	16	0	2	83	2
4	Nevada (Prescott)	115	22	19.13%	85	3	0	0	5	0
4	Ouachita (Camden)	274	81	29.56%	177	6	0	3	7	0
4	Sevier (DeQueen)	163	38	23.31%	110	5	0	0	10	0
4	Union (El Dorado)	400	113	28.25%	252	16	0	2	13	4
	Area Total	2,201	526	23.90%	1,415	55	0	17	175	13
5	Baxter (Mountain Home)	458	106	23.14%	317	5	0	17	13	0
5	Boone (Harrison)	543	134	24.68%	385	4	0	7	8	5
5	Conway (Morrilton)	334	91	27.25%	232	8	0	1	0	2
5	Faulkner (Conway)	1056	272	25.76%	681	27	0	11	53	12
5	Marion (Yellville)	199	55	27.64%	135	2	0	2	5	0
5	Newton (Jasper)	100	19	19.00%	78	1	0	0	2	0
5	Pope (Russellville)	725	205	28.28%	475	7	0	10	26	2
5	Searcy (Marshall)	116	36	31.03%	77	1	0	0	0	2
5	Van Buren (Clinton)	211	58	27.49%	144	2	0	6	1	0
	Area Total	3,742	976	26.08%	2,524	57	0	54	108	23
6	Pulaski (East)	558	98	17.56%	431	10	0	6	11	2
6	Pulaski (Jacksonville)	809	133	16.44%	629	13	0	9	23	2
6	Pulaski (North)	1053	238	22.60%	738	23	0	17	33	4
6	Pulaski (South)	977	183	18.73%	737	20	0	5	32	0
6	Pulaski (Southwest)	735	143	19.46%	536	32	0	11	13	0
	Area Total	4,132	795	19.24%	3,071	98	0	48	112	8

SFY 2012 ANNUAL REPORT CARD – APPENDICES

Area	County	Total	TRUE	True %	Unsub*	Exempt Prenatal	Exempt Religion	Exempt UJO	UTL	Unknown
7	Bradley (Warren)	124	11	8.87%	102	1	0	3	7	0
7	Calhoun (Hampton)	43	7	16.28%	33	0	0	1	2	0
7	Cleveland (Rison)	86	17	19.77%	65	1	0	0	3	0
7	Dallas (Fordyce)	107	21	19.63%	76	0	0	4	4	2
7	Grant (Sheridan)	201	36	17.91%	139	1	0	6	17	2
7	Jefferson (Pine Bluff)	721	175	24.27%	442	18	0	14	26	46
7	Lincoln (Star City)	97	16	16.49%	73	0	1	2	5	0
7	Lonoke (Lonoke)	902	173	19.18%	627	7	0	14	38	43
7	Prairie (DeValls Bluff)	76	16	21.05%	54	1	0	0	2	3
	Area Total	2,357	472	20.03%	1,611	29	1	44	104	96
8	Clay (Fggott & Corning)	265	68	25.66%	185	2	0	2	8	0
8	Craighead (Jonesboro)	1379	227	16.46%	1058	24	0	18	45	7
8	Fulton (Salem)	144	38	26.39%	96	2	0	0	8	0
8	Greene (Paragould)	884	184	20.81%	648	8	0	11	28	5
8	Izard (Melbourne)	179	76	42.46%	94	2	0	1	4	2
8	Lawrence (Walnut Ridge)	321	75	23.36%	232	4	0	7	1	2
8	Mississippi (Blytheville)	478	93	19.46%	348	13	0	3	18	3
8	Mississippi (Osceola)	208	38	18.27%	157	6	0	3	4	0
8	Randolph (Pocahontas)	228	46	20.18%	172	1	0	5	3	1
8	Sharp (Ash Flat)	233	58	24.89%	160	7	0	0	7	1
	Area Total	4,319	903	20.91%	3,150	69	0	50	126	21
9	Ceburne (Heber Springs)	373	75	20.11%	279	3	0	3	9	4
9	Crittenden (West Memphis)	597	149	24.96%	417	14	0	2	13	2
9	Cross (Wynne)	214	59	27.57%	143	2	0	5	4	1
9	Independence (Batesville)	537	97	18.06%	396	6	0	2	6	30
9	Jackson (Newport)	219	54	24.66%	145	7	0	1	1	11
9	Poinsett (Harrisburg)	484	100	20.66%	350	13	0	2	16	3
9	Stone (Mountain View)	179	40	22.35%	131	4	0	2	0	2
9	White (Searcy)	957	138	14.42%	745	6	1	8	32	27
9	Woodruff (Augusta)	84	20	23.81%	57	3	0	0	1	3
	Area Total	3,644	732	20.09%	2,663	58	1	25	82	83
10	Arkansas (Dewitt)	96	29	30.21%	66	0	0	0	0	1
10	Arkansas (Stuttgart)	124	28	22.58%	94	2	0	0	0	0
10	Ashley (Hamburg)	227	58	25.55%	150	7	0	6	4	2
10	Chicot (Lake Village)	121	13	10.74%	106	0	0	1	1	0
10	Chicot (Lake Village)	154	43	27.92%	110	1	0	0	0	0
10	Drew (Monticello)	222	57	25.68%	158	1	0	3	2	1
10	Lee (Marianna)	73	9	12.33%	62	1	0	1	0	0
10	Monroe (Brinkley)	57	13	22.81%	37	2	0	0	1	4
10	Monroe (Clarendon)	21	4	19.05%	17	0	0	0	0	0
10	Phillips (Helena)	265	32	12.08%	207	7	0	3	13	3
10	St. Francis (Forrest City)	300	47	15.67%	239	7	0	1	3	3
	Area Total	1,660	333	20.06%	1,246	28	0	15	24	14
99	Unknown County	1	0	0.00%	1	0	0	0	0	0
	Statewide Total	35,743	7,434	20.80%	25,298	579	3	410	1,318	701

* "Unsub" = Unsubstantiated; "UTL" = Unable to Locate; "UJO" = Underage Juvenile Offender; "Unknown" = Status of assessment is not identified in CHRIS.

** This total includes both DCFS and CACD assessments.

APPENDIX B: Children in Foster Care by Ethnicity

Area	County	Total	White	Black	Asian	AIAN	NAPI	Unknown	Hispanic	More Than 1 Race
1	Benton (Bentonville)	318	227	17	1	0	0	1	53	18
1	Carroll (Berryville)	81	66	0	0	0	0	0	8	7
1	Madison (Huntsville)	39	36	0	0	0	0	0	2	1
1	Washington (Fayetteville)	394	282	13	0	6	6	1	55	37
	Area Total	832	611	30	1	6	6	2	118	63
2	Crawford (Van Buren)	146	116	1	1	0	0	2	7	19
2	Franklin (Ozark)	57	54	0	0	0	0	0	1	2
2	Johnson (Clarksville)	110	88	2	1	0	0	0	8	11
2	Logan (Booneville)	44	42	0	0	0	0	0	1	0
2	Logan (Paris)	18	13	0	0	0	0	2	0	3
2	Scott (Waldron)	33	27	0	0	0	0	0	4	2
2	Sebastian (Fort Smith)	848	528	68	5	0	0	2	94	150
2	Yell (Danville)	63	51	0	0	0	0	3	6	2
	Area Total	1,319	919	71	7	0	0	9	121	189
3	Clark (Arkadelphia)	26	20	2	0	0	0	0	2	2
3	Garland (Hot Springs)	257	168	35	0	0	0	1	11	42
3	Hot Spring (Malvern)	50	32	9	0	0	0	0	4	5
3	Howard (Nashville)	23	14	8	0	0	0	1	0	0
3	Montgomery (Mount Ida)	31	21	0	0	0	0	0	10	0
3	Perry (Perryville)	34	32	0	0	0	0	0	1	1
3	Pike (Murfreesboro)	22	21	0	0	0	0	0	1	0
3	Polk (Mena)	58	54	0	0	0	0	0	4	0
3	Saline (Benton)	115	93	4	0	0	0	3	5	10
	Area Total	616	455	58	0	0	0	5	38	60
4	Columbia (Magnolia)	34	16	11	0	0	0	0	1	6
4	Hempstead (Hope)	31	10	12	0	0	0	0	2	7
4	Lafayette (Lewisville)	9	2	6	0	0	0	0	0	1
4	Little River (Ashdown)	36	29	1	0	0	0	0	0	6
4	Miller (Texarkana)	199	135	46	0	0	0	0	7	11
4	Nevada (Prescott)	10	8	2	0	0	0	0	0	0
4	Ouachita (Camden)	40	18	18	0	0	0	0	1	3
4	Sevier (DeQueen)	63	39	2	0	0	0	0	12	10
4	Union (B Dorado)	84	17	49	0	0	0	0	7	11
	Area Total	506	274	147	0	0	0	0	30	55
	Baxter (Mountain Home)	54	48	0	0	0	0	0	4	2
5	Boone (Harrison)	112	104	0	0	0	0	0	3	3
5	Conway (Morrilton)	119	73	20	0	0	0	0	9	17
5	Faulkner (Conway)	164	110	31	0	1	1	1	8	13
5	Marion (Yellville)	56	53	0	0	0	0	0	2	1
5	Newton (Jasper)	11	11	0	0	0	0	0	0	0
5	Pope (Russellville)	125	86	5	2	0	0	0	18	14
5	Searcy (Marshall)	28	22	0	0	0	0	0	3	3
5	Van Buren (Clinton)	44	42	0	0	0	0	0	1	1
	Area Total	713	549	56	2	1	1	1	48	54
6	Pulaski	5	3	2	0	0	0	0	0	0
6	Pulaski (East)	99	24	60	0	0	0	2	0	13
6	Pulaski (Jacksonville)	147	67	56	0	0	0	0	9	15
6	Pulaski (North)	283	76	181	0	0	0	0	3	23
6	Pulaski (South)	207	37	144	0	1	1	0	6	19
6	Pulaski (Southwest)	194	63	112	0	0	0	0	9	10
	Area Total	935	270	555	0	1	1	2	27	80

SFY 2012 ANNUAL REPORT CARD – APPENDICES

	County	Total	White	Black	Asian	AIAN	NAPI	Unknown	Hispanic	More Than 1 Race
7	Bradley (Warren)	24	11	7	0	0	0	0	5	1
7	Calhoun (Hampton)	2	2	0	0	0	0	0	0	0
7	Cleveland (Rison)	6	4	1	0	0	0	0	1	0
7	Dallas (Fordyce)	16	4	5	0	0	0	0	0	7
7	Grant (Sheridan)	22	17	0	0	0	0	0	1	4
7	Jefferson (Pine Bluff)	397	57	319	1	0	0	0	5	15
7	Lincoln (Star City)	15	12	1	0	0	0	0	2	0
7	Lonoke (Lonoke)	184	144	11	0	0	0	2	7	20
7	Prairie (DeValls Bluff)	15	5	8	0	0	0	0	0	2
	Area Total	681	256	352	1	0	0	2	21	49
8	Clay (Piggott & Corning)	50	49	0	0	0	0	0	1	0
8	Craighead (Jonesboro)	247	157	54	0	0	0	2	8	26
8	Fulton (Salem)	76	71	0	0	0	0	0	3	2
8	Greene (Paragould)	148	124	0	0	0	0	1	14	9
8	Izard (Melbourne)	57	50	0	0	0	0	0	5	2
8	Lawrence (Walnut Ridge)	98	83	2	0	0	0	0	3	10
8	Mississippi (Blytheville)	42	26	11	0	0	0	0	3	2
8	Mississippi (Osceola)	18	8	7	0	0	0	0	1	2
8	Randolph (Pocahontas)	51	50	0	0	0	0	0	0	1
8	Sharp (Ash Flat)	106	94	1	1	0	0	0	0	9
	Area Total	893	712	75	1	0	0	3	38	63
9	Cleburne (Heber Springs)	88	87	0	0	0	0	0	1	0
9	Crittenden (West Memphis)	140	40	80	0	0	0	1	5	14
9	Cross (Wynne)	69	32	26	0	0	0	0	1	10
9	Independence (Batesville)	149	116	3	0	0	0	1	19	10
9	Jackson (Newport)	100	74	16	0	0	0	0	0	10
9	Poinsett (Harrisburg)	101	100	0	0	0	0	0	0	1
9	Stone (Mountain View)	41	35	0	0	0	0	0	5	1
9	White (Searcy)	153	107	11	0	0	0	1	12	22
9	Woodruff (Augusta)	34	18	12	0	0	0	0	0	4
	Area Total	875	609	148	0	0	0	3	43	72
10	Arkansas (Dewitt)	20	17	3	0	0	0	0	0	0
10	Arkansas (Stuttgart)	31	13	15	0	0	0	0	0	3
10	Ashley (Hamburg)	43	15	22	0	0	0	0	5	1
10	Chicot (Lake Village)	26	2	21	0	0	0	1	0	2
10	Desha (McGehee)	35	12	18	0	0	0	0	0	5
10	Drew (Monticello)	55	30	18	0	0	0	1	3	3
10	Lee (Marianna)	20	3	17	0	0	0	0	0	0
10	Monroe (Brinkley)	9	4	5	0	0	0	0	0	0
10	Monroe (Clarendon)	6	3	2	0	1	0	0	0	0
10	Phillips (Helena)	52	11	36	0	0	0	0	2	3
10	St. Francis (Forrest City)	72	18	47	0	0	0	0	5	2
	Area Total	369	128	204	0	0	0	2	15	19
	Statewide Total	7,739	4,783	1,696	12	8	8	29	499	704

APPENDIX C: Children in Foster Care by Age

Area	County	Total	0-5 years	6-11 years	12-14 years	15+ years	Unknown
1	Benton (Bentonville)	318	41	84	89	30	74
1	Carroll (Berryville)	81	15	25	26	4	11
1	Madison (Huntsville)	39	5	9	4	6	15
1	Washington (Fayetteville)	394	63	119	102	35	75
	Area Total	832	124	237	221	75	175
2	Crawford (Van Buren)	146	17	42	45	16	26
2	Franklin (Ozark)	57	5	16	21	7	8
2	Johnson (Clarksville)	110	14	38	39	8	11
2	Logan (Booneville)	44	10	12	13	7	2
2	Logan (Paris)	18	5	10	2	0	1
2	Scott (Waldron)	33	8	11	5	4	5
2	Sebastian (Fort Smith)	848	119	232	231	95	171
2	Yell (Danville)	63	10	19	13	11	10
	Area Total	1,319	188	380	369	148	234
3	Clark (Arkadelphia)	26	6	5	8	2	5
3	Garland (Hot Springs)	257	39	61	62	39	56
3	Hot Spring (Malvern)	50	9	16	15	3	7
3	Howard (Nashville)	23	5	5	6	3	4
3	Montgomery (Mount Ida)	31	1	14	4	5	7
3	Perry (Perryville)	34	2	14	12	3	3
3	Pike (Murfreesboro)	22	3	8	9	2	0
3	Polk (Mena)	58	7	16	13	7	15
3	Saline (Benton)	115	24	29	29	13	20
	Area Total	616	96	168	158	77	117
4	Columbia (Magnolia)	34	5	11	7	5	6
4	Hempstead (Hope)	31	3	13	8	5	2
4	Lafayette (LeWesville)	9	1	5	1	1	1
4	Little River (Ashdown)	36	3	7	16	6	4
4	Miller (Texarkana)	199	30	60	52	20	37
4	Nevada (Prescott)	10	4	1	3	2	0
4	Ouachita (Camden)	40	6	7	10	5	12
4	Sevier (DeQueen)	63	12	20	14	8	9
4	Union (El Dorado)	84	14	10	27	11	22
	Area Total	506	78	134	138	63	93
5	Baxter (Mountain Home)	54	10	15	15	5	9
5	Boone (Harrison)	112	17	39	25	6	25
5	Conway (Morrilton)	119	17	29	32	13	28
5	Faulkner (Conway)	164	33	38	34	21	38
5	Marion (Yellville)	56	6	16	17	6	11
5	Newton (Jasper)	11	1	3	0	1	6
5	Pope (Russellville)	125	23	43	33	11	15
5	Searcy (Marshall)	28	2	6	11	4	5
5	Van Buren (Clinton)	44	7	12	10	3	12
	Area Total	713	116	201	177	70	149
6	Pulaski	5	0	0	1	2	2
6	Pulaski (East)	99	16	32	22	13	16
6	Pulaski (Jacksonville)	147	18	39	39	24	27
6	Pulaski (North)	283	51	70	69	32	61
6	Pulaski (South)	207	33	46	56	20	52
6	Pulaski (Southwest)	194	29	50	65	20	30
	Area Total	935	147	237	252	111	188

SFY 2012 ANNUAL REPORT CARD – APPENDICES

Area	County	Total	0-5 years	6-11 years	12-14 years	15+ years	Unknown
7	Bradley (Warren)	24	3	5	2	3	11
7	Calhoun (Hampton)	2	0	1	1	0	0
7	Cleveland (Rison)	6	1	1	3	0	1
7	Dallas (Fordyce)	16	4	3	5	3	1
7	Grant (Sheridan)	22	8	2	9	1	2
7	Jefferson (Pine Bluff)	397	54	104	112	39	88
7	Lincoln (Star City)	15	2	6	4	2	1
7	Lonoke (Lonoke)	184	32	53	54	15	30
7	Prairie (DeValls Bluff)	15	4	6	3	0	2
	Area Total	681	108	181	193	63	136
8	Clay (Piggott & Corning)	50	12	13	16	1	8
8	Craighead (Jonesboro)	247	42	68	80	19	38
8	Fulton (Salem)	76	4	31	19	9	13
8	Greene (Paragould)	148	19	39	50	13	27
8	Izard (Melbourne)	57	5	8	17	12	15
8	Lawrence (Walnut Ridge)	98	15	32	28	12	11
8	Mississippi (Blytheville)	42	4	14	6	3	15
8	Mississippi (Osceola)	18	2	3	3	2	8
8	Randolph (Pocahontas)	51	1	11	13	9	17
8	Sharp (Ash Flat)	106	9	27	26	14	30
	Area Total	893	113	246	258	94	182
9	Cleburne (Heber Springs)	88	9	19	26	15	19
9	Crittenden (West Memphis)	140	24	41	54	9	12
9	Cross (Wynne)	69	15	30	13	3	8
9	Independence (Batesville)	149	22	52	36	16	23
9	Jackson (Newport)	100	19	32	26	4	19
9	Poinsett (Harrisburg)	101	10	39	30	9	13
9	Stone (Mountain View)	41	15	11	10	1	4
9	White (Searcy)	153	25	51	44	11	22
9	Woodruff (Augusta)	34	3	6	9	7	9
	Area Total	875	142	281	248	75	129
10	Arkansas (Dewitt)	20	3	6	5	3	3
10	Arkansas (Stuttgart)	31	8	8	7	2	6
10	Ashley (Hamburg)	43	9	10	6	7	11
10	Chicot (Lake Village)	26	3	8	2	2	11
10	Desha (McGehee)	35	6	11	8	4	6
10	Drew (Monticello)	55	16	8	6	5	20
10	Lee (Marianna)	20	4	5	3	1	7
10	Monroe (Brinkley)	9	0	5	1	1	2
10	Monroe (Clarendon)	6	1	1	2	1	1
10	Phillips (Helena)	52	6	13	13	9	11
10	St. Francis (Forrest City)	72	13	15	15	6	23
	Area Total	369	69	90	68	41	101
	Statewide Total	7,739	1,181	2,155	2,082	817	1,504

APPENDIX D: Children in Foster Care by Gender

Area	County	Total	Male	Female
1	Benton (Bentonville)	318	170	148
1	Carroll (Berryville)	81	43	38
1	Madison (Huntsville)	39	19	20
1	Washington (Fayetteville)	394	202	192
	Area Total	832	434	398
2	Crawford (Van Buren)	146	74	72
2	Franklin (Ozark)	57	29	28
2	Johnson (Clarksville)	110	45	65
2	Logan (Booneville)	44	26	18
2	Logan (Paris)	18	6	12
2	Scott (Waldron)	33	18	15
2	Sebastian (Fort Smith)	848	426	422
2	Yell (Danville)	63	32	31
	Area Total	1,319	656	663
3	Clark (Arkadelphia)	26	13	13
3	Garland (Hot Springs)	257	130	127
3	Hot Spring (Malvern)	50	25	25
3	Howard (Nashville)	23	12	11
3	Montgomery (Mount Ida)	31	14	17
3	Perry (Perryville)	34	18	16
3	Pike (Murfreesboro)	22	14	8
3	Polk (Mena)	58	27	31
3	Saline (Benton)	115	61	54
	Area Total	616	314	302
4	Columbia (Magnolia)	34	16	18
4	Hempstead (Hope)	31	15	16
4	Lafayette (Lewisville)	9	8	1
4	Little River (Ashdown)	36	17	19
4	Miller (Texarkana)	199	114	85
4	Nevada (Prescott)	10	5	5
4	Ouachita (Camden)	40	23	17
4	Sevier (DeQueen)	63	30	33
4	Union (El Dorado)	84	49	35
	Area Total	506	277	229
5	Baxter (Mountain Home)	54	30	24
5	Boone (Harrison)	112	58	54
5	Conway (Morrilton)	119	62	57
5	Faulkner (Conway)	164	82	82
5	Marion (Yellville)	56	30	26
5	Newton (Jasper)	11	5	6
5	Pope (Russellville)	125	64	61
5	Searcy (Marshall)	28	7	21
5	Van Buren (Clinton)	44	20	24
	Area Total	713	358	355
6	Pulaski	5	2	3
6	Pulaski (East)	99	51	48
6	Pulaski (Jacksonville)	147	66	81
6	Pulaski (North)	283	145	138
6	Pulaski (South)	207	99	108
6	Pulaski (Southwest)	194	94	100
	Area Total	935	457	478

SFY 2012 ANNUAL REPORT CARD – APPENDICES

Area	County	Total	Male	Female
7	Bradley (Warren)	24	12	12
7	Calhoun (Hampton)	2	1	1
7	Cleveland (Rison)	6	4	2
7	Dallas (Fordyce)	16	9	7
7	Grant (Sheridan)	22	11	11
7	Jefferson (Pine Bluff)	397	205	192
7	Lincoln (Star City)	15	7	8
7	Lonoke (Lonoke)	184	98	86
7	Prairie (DeValls Bluff)	15	7	8
	Area Total	681	354	327
8	Clay (Piggott & Corning)	50	19	31
8	Craighead (Jonesboro)	247	116	131
8	Fulton (Salem)	76	44	32
8	Greene (Paragould)	148	69	79
8	Izard (Melbourne)	57	29	28
8	Lawrence (Walnut Ridge)	98	51	47
8	Mississippi (Blytheville)	42	22	20
8	Mississippi (Osceola)	18	7	11
8	Randolph (Pocahontas)	51	29	22
8	Sharp (Ash Flat)	106	46	60
	Area Total	893	432	461
9	Cleburne (Heber Springs)	88	45	43
9	Crittenden (West Memphis)	140	64	76
9	Cross (Wynne)	69	29	40
9	Independence (Batesville)	149	73	76
9	Jackson (Newport)	100	50	50
9	Poinsett (Harrisburg)	101	55	46
9	Stone (Mountain View)	41	21	20
9	White (Searcy)	153	77	76
9	Woodruff (Augusta)	34	18	16
	Area Total	875	432	443
10	Arkansas (Dewitt)	20	6	14
10	Arkansas (Stuttgart)	31	12	19
10	Ashley (Hamburg)	43	16	27
10	Chicot (Lake Village)	26	12	14
10	Desha (McGehee)	35	21	14
10	Drew (Monticello)	55	27	28
10	Lee (Marianna)	20	9	11
10	Monroe (Brinkley)	9	6	3
10	Monroe (Clarendon)	6	4	2
10	Phillips (Helena)	52	26	26
10	St. Francis (Forrest City)	72	36	36
	Area Total	369	175	194
	Statewide Total	7,739	3,889	3,850

APPENDIX E: Children in Foster Care by Lengths of Stay

Area	County	Total	Less than 30 Days	30 to 90 Days	3 to 6 Months	7 to 12 Months	12 to 24 Months	24 to 36 Months	Over 36 Months
1	Benton (Bentonville)	318	46	51	41	51	73	30	26
1	Carroll (Berryville)	81	4	16	8	19	17	8	9
1	Madison (Huntsville)	39	0	6	4	16	7	3	3
1	Washington (Fayetteville)	394	115	73	38	70	69	10	19
	Area Total	832	165	146	91	156	166	51	57
2	Crawford (Van Buren)	146	23	34	22	12	38	3	14
2	Franklin (Ozark)	57	3	9	1	22	17	2	3
2	Johnson (Clarksville)	110	14	18	18	31	21	7	1
2	Logan (Booneville)	44	2	15	4	8	11	3	1
2	Logan (Paris)	18	4	0	2	3	9	0	0
2	Scott (Waldron)	33	5	2	10	8	8	0	0
2	Sebastian (Fort Smith)	848	37	85	82	137	219	128	160
2	Yell (Danville)	63	10	13	9	8	9	9	5
	Area Total	1319	98	176	148	229	332	152	184
3	Clark (Arkadelphia)	26	7	5	3	1	2	3	5
3	Garland (Hot Springs)	257	50	50	35	49	37	11	25
3	Hot Spring (Malvern)	50	14	8	9	10	7	1	1
3	Howard (Nashville)	23	5	1	1	12	0	0	4
3	Montgomery (Mount Ida)	31	6	9	2	8	3	0	3
3	Perry (Perryville)	34	14	0	3	4	3	4	6
3	Pike (Murfreesboro)	22	0	7	4	0	2	9	0
3	Polk (Mena)	58	11	4	8	8	15	3	9
3	Saline (Benton)	115	23	13	13	20	22	13	11
	Area Total	616	130	97	78	112	91	44	64
4	Columbia (Magnolia)	34	22	4	3	0	4	0	1
4	Hempstead (Hope)	31	12	7	3	2	3	1	3
4	Lafayette (Lewistown)	9	2	0	0	4	3	0	0
4	Little River (Ashdown)	36	11	9	4	3	1	2	6
4	Miller (Texarkana)	199	36	15	17	37	39	33	22
4	Nevada (Prescott)	10	2	0	0	7	1	0	0
4	Ouachita (Camden)	40	11	6	5	10	2	1	5
4	Sevier (DeQueen)	63	2	9	10	12	9	14	7
4	Union (El Dorado)	84	29	11	15	8	3	5	13
	Area Total	506	127	61	57	83	65	56	57
5	Baxter (Mountain Home)	54	11	8	5	6	11	2	11
5	Boone (Harrison)	112	11	22	13	13	34	18	1
5	Conway (Morrilton)	119	9	14	7	23	36	12	18
5	Faulkner (Conway)	164	44	21	18	32	23	15	11
5	Marion (Yellville)	56	4	9	4	9	9	11	10
5	Newton (Jasper)	11	3	0	0	2	4	2	0
5	Pope (Russellville)	125	14	15	18	20	32	10	16
5	Searcy (Marshall)	28	3	7	8	3	0	4	3
5	Van Buren (Clinton)	44	7	6	7	10	2	4	8
	Area Total	713	106	102	80	118	151	78	78
6	Pulaski	5	1	2	2	0	0	0	0
6	Pulaski (East)	99	8	18	13	14	23	6	17
6	Pulaski (Jacksonville)	147	26	12	20	33	35	7	14
6	Pulaski (North)	283	23	25	36	56	58	19	66
6	Pulaski (South)	207	6	10	20	37	54	27	53
6	Pulaski (Southwest)	194	21	24	28	50	36	14	21
	Area Total	935	85	91	119	190	206	73	171

SFY 2012 ANNUAL REPORT CARD – APPENDICES

Area	County	Total	Less than 30 Days	30 to 90 Days	3 to 6 Months	7 to 12 Months	12 to 24 Months	24 to 36 Months	Over 36 Months
7	Bradley (Warren)	24	2	2	5	6	3	1	5
7	Calhoun (Hampton)	2	1	0	1	0	0	0	0
7	Cleveland (Rison)	6	1	3	0	1	1	0	0
7	Dallas (Fordyce)	16	3	4	5	1	3	0	0
7	Grant (Sheridan)	22	5	5	8	1	2	1	0
7	Jefferson (Pine Bluff)	397	71	56	36	65	105	34	30
7	Lincoln (Star City)	15	1	1	2	9	1	1	0
7	Lonoke (Lonoke)	184	20	26	22	48	49	11	8
7	Prairie (DeValls Bluff)	15	0	2	0	8	3	0	2
	Area Total	681	104	99	79	139	167	48	45
8	Clay (Piggott & Corning)	50	1	12	12	4	16	2	3
8	Craighead (Jonesboro)	247	27	18	30	38	65	44	25
8	Fulton (Salem)	76	9	8	5	12	20	15	7
8	Greene (Paragould)	148	13	25	19	35	35	9	12
8	Izard (Melbourne)	57	4	9	3	12	12	7	10
8	Lawrence (Walnut Ridge)	98	10	10	18	21	23	2	14
8	Mississippi (Blytheville)	42	9	2	2	8	8	9	4
8	Mississippi (Osceola)	18	6	4	2	0	2	2	2
8	Randolph (Pocahontas)	51	1	9	1	6	20	10	4
8	Sharp (Ash Flat)	106	9	11	16	19	31	13	7
	Area Total	893	89	108	108	155	232	113	88
9	Cleburne (Heber Springs)	88	7	13	9	30	17	3	9
9	Crittenden (West Memphis)	140	24	11	21	33	18	15	18
9	Cross (Wynne)	69	9	14	5	13	23	5	0
9	Independence (Batesville)	149	8	9	24	43	42	13	10
9	Jackson (Newport)	100	7	21	18	17	30	1	6
9	Poinsett (Harrisburg)	101	18	2	25	19	24	11	2
9	Stone (Mountain View)	41	7	11	7	9	5	0	2
9	White (Searcy)	153	36	33	20	19	24	13	8
9	Woodruff (Augusta)	34	9	2	9	5	2	3	4
	Area Total	875	125	116	138	188	185	64	59
10	Arkansas (Dewitt)	20	1	5	3	7	3	0	1
10	Arkansas (Stuttgart)	31	7	1	3	8	8	1	3
10	Ashley (Hamburg)	43	16	15	3	1	5	0	3
10	Chicot (Lake Village)	26	0	1	6	2	4	6	7
10	Desha (McGehee)	35	2	10	4	6	9	2	2
10	Drew (Monticello)	55	5	12	7	8	7	3	13
10	Lee (Marianna)	20	1	3	4	4	3	1	4
10	Monroe (Brinkley)	9	1	1	0	2	3	2	0
10	Monroe (Clarendon)	6	4	0	0	2	0	0	0
10	Phillips (Helena)	52	3	5	7	12	9	6	10
10	St. Francis (Forrest City)	72	9	3	14	20	9	9	8
	Area Total	369	49	56	51	72	60	30	51
	Statewide Total	7,739	1,078	1,052	949	1,442	1,655	709	854

APPENDIX F: Services Provided during the Year

Area	County	FC Cases	PS Cases	PS Children	SS Cases	SS Children	Total
1	Benton (Bentonville)	318	495	1140	2	2	815
1	Carroll (Berryville)	81	70	170	0	0	151
1	Madison (Huntsville)	39	66	138	1	2	106
1	Washington (Fayetteville)	394	714	1700	12	28	1120
	Area Total	832	1,345	3,148	15	32	2,192
2	Crawford (Van Buren)	146	310	747	14	32	470
2	Franklin (Ozark)	57	103	247	3	7	163
2	Johnson (Clarksville)	110	136	296	0	0	246
2	Logan (Booneville)	44	75	170	2	2	121
2	Logan (Paris)	18	44	98	1	2	63
2	Scott (Waldron)	33	58	150	11	25	102
2	Sebastian (Fort Smith)	848	902	2017	11	36	1761
2	Yell (Danville)	63	110	255	3	3	176
	Area Total	1,319	1,738	3,980	45	107	1,319
3	Clark (Arkadelphia)	26	45	94	3	10	74
3	Garland (Hot Springs)	257	371	819	44	95	672
3	Hot Spring (Malvern)	50	117	299	6	20	173
3	Howard (Nashville)	23	31	71	2	7	56
3	Montgomery (Mount Ida)	31	26	73	2	3	59
3	Perry (Perryville)	34	41	99	3	3	78
3	Pike (Murfreesboro)	22	23	50	5	9	50
3	Polk (Mena)	58	64	142	22	56	144
3	Saline (Benton)	115	235	515	16	37	366
	Area Total	616	953	2,162	103	240	1,672
4	Columbia (Magnolia)	34	78	181	13	32	125
4	Hempstead (Hope)	31	100	256	4	11	135
4	Lafayette (Lewisville)	9	35	98	1	1	45
4	Little River (Ashdown)	36	58	124	2	5	96
4	Miller (Texarkana)	199	218	460	7	16	424
4	Nevada (Prescott)	10	56	137	0	0	66
4	Ouachita (Camden)	40	128	288	3	7	171
4	Sevier (DeQueen)	63	93	209	2	6	158
4	Union (El Dorado)	84	158	356	4	9	246
	Area Total	506	924	2,109	36	87	1,466
5	Baxter (Mountain Home)	54	155	335	9	22	218
5	Boone (Harrison)	112	199	461	12	22	323
5	Conway (Morrilton)	119	154	369	32	68	305
5	Faulkner (Conway)	164	393	889	11	29	568
5	Marion (Yellville)	56	75	151	2	2	133
5	Newton (Jasper)	11	28	70	1	1	40
5	Pope (Russellville)	125	289	652	25	55	439
5	Searcy (Marshall)	28	47	96	4	7	79
5	Van Buren (Clinton)	44	96	211	5	10	145
	Area Total	713	1,436	3,234	101	216	2,250
6	Pulaski	5	6	16	1	2	12
6	Pulaski (East)	99	126	297	5	6	230
6	Pulaski (Jacksonville)	147	233	514	14	27	394
6	Pulaski (North)	283	369	864	23	61	675
6	Pulaski (South)	207	231	619	22	60	460
6	Pulaski (Southwest)	194	255	711	13	24	462
	Area Total	935	1,220	3,021	78	180	2,233

SFY 2012 ANNUAL REPORT CARD – APPENDICES

Area	County	FC Cases	PS Cases	PS Children	SS Cases	SS Children	Total
7	Bradley (Warren)	24	35	71	3	2	62
7	Calhoun (Hampton)	2	3	7	0	0	5
7	Cleveland (Rison)	6	22	39	0	0	28
7	Dallas (Fordyce)	16	19	50	3	8	38
7	Grant (Sheridan)	22	35	80	9	23	66
7	Jefferson (Pine Bluff)	397	389	1055	43	110	829
7	Lincoln (Star City)	15	21	47	1	1	37
7	Lonoke (Lonoke)	184	321	759	3	3	508
7	Prairie (DeValls Bluff)	15	28	60	1	0	44
	Area Total	681	873	2,168	63	147	1,617
8	Clay (Piggott & Corning)	50	84	201	9	26	143
8	Craighead (Jonesboro)	247	390	965	3	5	640
8	Fulton (Salem)	76	79	167	12	22	167
8	Greene (Paragould)	148	293	658	16	41	457
8	Izard (Melbourne)	57	114	241	18	40	189
8	Lawrence (Walnut Ridge)	98	124	253	1	2	223
8	Mississippi (Blytheville)	42	143	412	1	1	186
8	Mississippi (Osceola)	18	70	191	0	0	88
8	Randolph (Pocahontas)	51	85	192	5	6	141
8	Sharp (Ash Flat)	106	118	234	2	8	226
	Area Total	893	1,500	3,514	67	151	2,460
9	Cleburne (Heber Springs)	88	116	243	4	16	208
9	Crittenden (West Memphis)	140	225	615	30	85	395
9	Cross (Wynne)	69	103	257	1	2	173
9	Independence (Batesville)	149	227	524	4	8	380
9	Jackson (Newport)	100	118	249	2	10	220
9	Poinsett (Harrisburg)	101	164	385	1	1	266
9	Stone (Mountain View)	41	69	158	2	7	112
9	White (Searcy)	153	211	479	4	9	368
9	Woodruff (Augusta)	34	55	122	2	1	91
	Area Total	875.00	1,288.00	3,032.00	50.00	139.00	2213
10	Arkansas (Dewitt)	20	29	66	1	4	50
10	Arkansas (Stuttgart)	31	45	99	1	4	77
10	Ashley (Hamburg)	43	63	128	9	21	115
10	Chicot (Lake Village)	26	32	70	10	23	68
10	Desha (McGehee)	35	53	113	24	72	112
10	Drew (Monticello)	55	82	182	20	46	157
10	Lee (Marianna)	20	30	55	6	18	56
10	Monroe (Brinkley)	9	14	38	3	9	26
10	Monroe (Clarendon)	6	8	19	3	5	17
10	Phillips (Helena)	52	87	234	5	9	144
10	St. Francis (Forrest City)	72	105	299	33	101	210
	Area Total	369	548	1,303	115	312	1,032
	Statewide Total	7,739	11,825	27,671	673	1,611	18,454

Appendix G: True Fatality

True Fatality Reports

Child	County	Age	Race	Gender	Date of Death	Allegations or Preliminary Cause of Death	Placement at the Time of Incident	Relationship of Alleged Offender to the Child	Agency Conducting the Investigation	Legal Action By the Department	Services Provided Prior to the Incident	Services Provided After the Incident
Cali Marie Casey	Pulaski	<1	White	Female	8/27/2011	Inadequate Supervision	In-Home	Family Member	CACD	None	None	FC Case
Antonio Campbell	Pulaski	0	Black	Male	8/16/2011	Poison/Noxious Substances	In-Home	Family Member	CACD	None	None	FC Case
Austin Harris	White	2	White	Male	7/18/2011	Physical Abuse	In-Home	Unknown	CACD	None	None	None
Cherish Samuels	Union	1	Multi-Ethnic	Female	8/9/2011	Physical Abuse/ Inadequate Supervision	In-Home	Unknown	CACD	None	Prior Investigation/ Prior PS Case	FC Case
Erica Kelley	Mississippi	1	White	Female	2/5/08	Inadequate Supervision	In-Home	Family Member	CACD	None	None	PS Case
Bentley Tyler	Greene	<1	White	Male	12/3/11	Inadequate Supervision	In-Home	Family Member	CACD	None	None	PS Case
Terrance Roberts, Jr.	Pulaski	<1	Black	Male	12/26/11	Inadequate Supervision	In-Home	Family Member	CACD	None	None	PS Case
Carmine Gambino	Crawford	<1	White	Female	12/8/11	Inadequate Supervision	In-Home	Family Member	CACD	None	None	None
Jaden Wright	Crawford	<1	Multi-Ethnic	Male	1/11/2012	Physical Abuse	In-Home	Family Member	CACD	None	None	None

SFY 2012 ANNUAL REPORT CARD – APPENDICES

Child	County	Age	Race	Gender	Date of Death	Allegations or Preliminary Cause of Death	Placement at the Time of Incident	Relationship of Alleged Offender to the Child	Agency Conducting the Investigation	Legal Action By the Department	Services Provided Prior to the Incident	Services Provided After the Incident
Marcus Simms, Jr.	Little River	1	Black	Male	1/23/2012	Physical Abuse	In-Home	Family Member	CACD	None	None	None
Blake Pierce	Poinsett	1	White	Male	1/27/2012	Inadequate Supervision	In-Home	Out of Home Offender	CACD	None	None	PS Case
Dillen-Jean Crystal	Lincoln	<1	White	Female	3/10/2012	Inadequate Supervision	In-Home	Family Member	CACD	None	None	FC Case
Tariqa Allen	Miller	11	Black	Female	3/12/2012	Inadequate Supervision	In-Home	Family Member	CACD	None	None	None
Jordan Evans	Boone	1	White	Female	3/14/2012	Physical Abuse	In-Home	Family Member	CACD	None	None	PS Case
Garrett Palmer	Marion	<1	White	Male	3/16/2012	Inadequate Supervision / Medical Neglect	In-Home	Family Member	CACD	None	PS Case	FC Case
Aubriana Coke	Drew	2	White	Female	2/27/2012	Physical Abuse	In-Home	Unknown	CACD	None	None	None
Caleb Lin	Fulton	4	White	Male	3/24/2012	Inadequate Supervision	In-Home	Family Member	CACD	None	None	None
Gage Pippin	Conway	3	White	Male	4/18/2012	Inadequate Supervision	In-Home	Family Member	DCFS	None	PS Case	FC Case
Trucker Taylor	Polk	2	White	Male	5/17/2012	Inadequate Supervision	In-Home	Family Member	CACD	None	None	FC Case

SFY 2012 ANNUAL REPORT CARD – APPENDICES

Child	County	Age	Race	Gender	Date of Death	Allegations or Preliminary Cause of Death	Placement at the Time of Incident	Relationship of Alleged Offender to the Child	Agency Conducting the Investigation	Legal Action By the Department	Services Provided Prior to the Incident	Services Provided After the Incident
Benjamin Hayes	Drew	6	White	Male	5/30/2012	Inadequate Supervision	In-Home	Family Member	CACD	None	PS Case	PS Case
Elizabeth Atherton	Crawford	3	White	Female	4/26/2012	Inadequate Supervision	In-Home	Family Member	CACD	None	None	FC Case
Jayson Vanderberg	Greene	<1	White	Male	4/25/2012	Inadequate Supervision	In-Home	Out of Home Offender	CACD	None	SS Case	SS Case
Raniyah Hymes	Pulaski	<1	Black	Female	6/26/2012	Inadequate Supervision	In-Home	Family Member	CACD	None	PS Case	PS Case
Santana Martinez	Benton	<1	White	Male	6/1/2012	Physical Abuse	In-Home	Out of Home Offender	CACD	None	None	FC Case

Unsubstantiated Fatality Reports

Child	County	Age	Race	Gender	Date of Death	Allegations or Preliminary Cause of Death	Placement at the Time of Incident	Relationship of Alleged Offender to the Child	Agency Conducting the Investigation	Legal Action By the Department	Services Provided Prior to the Incident	Services Provided After the Incident
James Dowling	Franklin	4	White	Male	8/12/2011	Inadequate Supervision	In-Home	Family Member	CACD	None	Prior FC Case	None
Addison Holt	Baxter	1	White	Female	9/11/2011	Inadequate Supervision	In-Home	Family Member	CACD	None	None	None
Kirstyn Ellis	Pulaski	<1	Black	Female	10/25/11	Inadequate Supervision	In-Home	Out of Home Offender	CACD	None	None	PS Case
Jeremy Colt Latfin	Conway	<1	White	Male	12/17/11	Inadequate Supervision	In-Home	Family Member	CACD	None	None	SS Case
Angel Rose Howell	Mississippi	<1	White	Female	1/1/2012	Physical Abuse	In-Home	Unknown	CACD	None	None	None
Aiden Lambert	Hot Spring	8	White	Male	5/29/2012	Inadequate Supervision	In-Home	Family Member	CACD	None	None	None

Pending Fatality Reports

Child	County	Age	Race	Gender	Date of Death	Allegations or Preliminary Cause of Death	Placement at the Time of Incident	Relationship of Alleged Offender to the Child	Agency Conducting the Investigation	Legal Action By the Department	Services Provided Prior to the Incident	Services Provided After the Incident
Karsen Strickland	Pike	2	White	Male	9/12/2011	Physical Abuse	In-Home	Unknown	CACD	None	Prior PS Case	FC Case
Alexander Long	Scott	1	White	Male	1/31/2012	Physical Abuse	In-Home	Out of Home Offender	CACD	None	None	None
Jetta Stillwell	Crawford	<1	White	Female	2/24/2012	Inadequate Supervision	In-Home	Family Member	CACD	None	None	FC Case
Christopher People, Jr.	Miller	1	Black	Male	4/30/2012	Inadequate Supervision	In-Home	Family Member	CACD	None	PS Case	PS Case
Cameron Johnson	Stone	4	White	Male	5/28/2012	Inadequate Supervision	In-Home	Family Member	CACD	None	None	FC Case
Jordan Fuller	Crawford	<1	White	Male	6/8/2012	Inadequate Supervision	In-Home	Family Member	CACD	None	None	None
Aidan McIntosh	Fulton	2	White	Male	6/17/2012	Inadequate Supervision	In-Home	Family Member	CACD	None	None	None
Braylon Allen	Hot Spring	<1	White	Male	6/17/2012	Inadequate Supervision	In-Home	Family Member	CACD	None	None	None

Appendix H: Near Fatality

True Near Fatality Reports

Child	County	Age	Race	Gender	Date of Near Fatality	Allegations or Preliminary Cause of Near Fatality	Placement at the Time of Incident	Relationship of Alleged Offender to the Child	Agency Conducting the Investigation	Legal Action By the Department	Services Provided Prior to the Incident	Services Provided After the Incident
Child #1	Benton	10	White	Male	7/17/2011	Inadequate Supervision	In-Home	Family Member	DCFS	None	None	None
Child #2	Crittenden	3	Black	Male	7/28/2011	Inadequate Supervision	In-Home	Family Member	DCFS	None	None	None
Child #3	Crittenden	2	Black	Male	7/28/2011	Inadequate Supervision	In-Home	Family Member	DCFS	None	None	PS Case
Child #4	Hempstead	1	White	Female	8/1/2011	Inadequate Supervision	In-Home	Family Member	DCFS	Children Removed	None	FC Case
Child #5	Mississippi	<1	Black	Male	10/25/11	Physical Abuse	In-Home	Out of Home Offender	CACD	None	None	FC Case
Child #6	Garland	1	Hispanic	Male	2/29/2012	Inadequate Supervision	In-Home	Family Member	CACD	None	None	PS Case
Child #7	Conway	<1	White	Female	3/20/2012	Inadequate Supervision	In-Home	Family Member	DCFS	None	None	PS Case
Child #8	White	3	White	Male	6/23/2012	Neglect	In-Home	Family Member	DCFS	None	None	FC Case
Child #9	White	2	White	Male	6/23/2012	Neglect	In-Home	Family Member	DCFS	None	None	FC Case

Unsubstantiated Near Fatality Reports

Child	County	Age	Race	Gender	Date of Near Fatality	Allegations or Preliminary Cause of Near Fatality	Placement at the Time of Incident	Relationship of Alleged Offender to the Child	Agency Conducting the Investigation	Legal Action By the Department	Services Provided Prior to the Incident	Services Provided After the Incident
Child #1	Craighead	1	White	Male	8/25/2011	Inadequate Supervision	In-Home	Family Member	DCFS	None	None	None
Child #2	Washington	5	White	Male	9/17/2011	Inadequate Supervision	In-Home	Family Member	DCFS	None	None	None

Pending Near Fatality Reports

Child	County	Age	Race	Gender	Date of Near Fatality	Allegations or Preliminary Cause of Near Fatality	Placement at the Time of Incident	Relationship of Alleged Offender to the Child	Agency Conducting the Investigation	Legal Action By the Department	Services Provided Prior to the Incident	Services Provided After the Incident
Child #1	White	<1	White	Female	6/20/2012	Physical Abuse	In-Home	Family Member	CACD	None	None	None

Appendix I: Fatalities of Children in Foster Care Who Did Not Receive a Maltreatment Investigation

Child	County	Age	Race	Gender	Date of Death	Preliminary Cause of Death	Placement at the Time of Incident	Legal Action By the Department	Services Provided Prior to the Incident	Services Provided After the Incident
Child #1	Sebastian	<1	White	Male	12/8/2011	SIDS	In Home	None	Prior Investigation	None
Child #2	Sebastian	1	White	Male	12/13/2011	Natural Causes	In Home	None	ICPC	None
Child #3	Washington	<1	White	Female	12/20/2011	Natural Causes	In Home	None	PS Case	PS Case
Child #4	Desha	<1	Black	Female	12/23/2011	Natural Causes	In Home	None	SS Case	SS Case
Child #5	Ouachita	1	Black	Male	12/31/2011	Unknown	In Home	None	Prior Investigation	None
Child #6	Pulaski	1	White	Male	3/9/2012	Medical Condition	FC	None	FC Case	FC Case
Child #7	Pulaski	3	White	Male	6/30/2012	Medical Condition	FC	None	FC Case	FC Case

Appendix J: Foster Care Maltreatment Reports

Foster Care Maltreatment Reports

Characteristics of Children in Foster Care Involved in Allegations of Maltreatment SFY 2012

Five hundred and six reports of alleged maltreatment, involving 513 children in foster care¹⁷, were received by the hotline during SYF 2012.

In one hundred and forty seven reports, involving 191 children, foster parents were identified as the alleged offenders. As displayed by the following chart, only 25 of these reports were found to be true. The majority of these homes were subsequently close or were made unavailable pending closure.

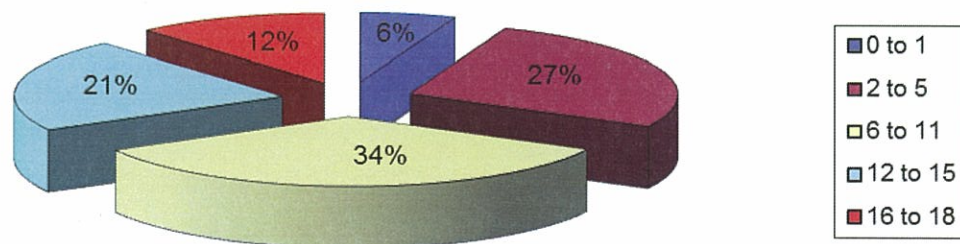
Foster Home Maltreatment Reports SFY 2012

True	Unsubstantiated	Pending
25	117	5

All allegations of maltreatment concerning foster homes are investigated by the Crimes Against Children Division (CACD) of the Arkansas State Police. DCFS staff do not actively participate in the investigation of these reports. Furthermore, all allegations of maltreatment regarding foster homes require the agency to assess the safety of all children residing in the home.

The following charts describe the 191 foster children involved in allegations of maltreatment—with foster parents as alleged offenders—by age, race, gender, allegations, and location.

Reports by Age

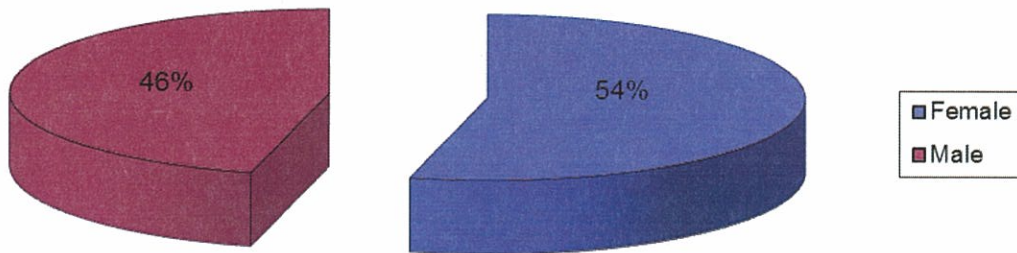


¹⁷ A maltreatment report can include more than one child.

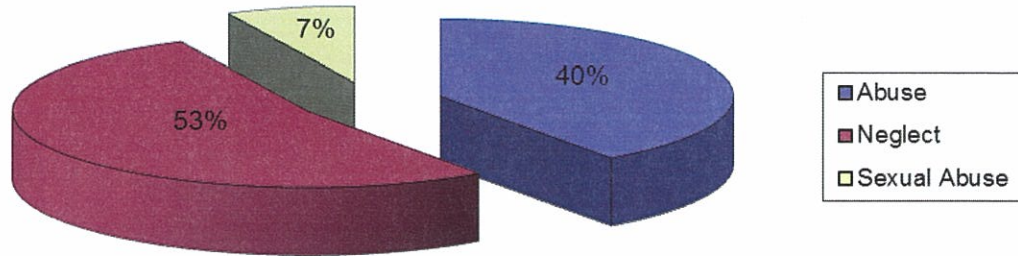
Reports by Race



Reports by Gender



Reports by Allegation



Reports by County

County	Number of Children Involved in Maltreatment Report	County	Number of Children Involved in Maltreatment Report
Pulaski	27	Independence	3
Benton	16	Mississippi	3
White	12	Clay	2
Jefferson	11	Columbia	2
St. Francis	10	Drew	2
Craighead	8	Lee	2
Scott	8	Miller	2
Washington	8	Phillips	2
Crawford	6	Pope	2
Franklin	6	Randolph	2
Lonoke	6	Sebastian	2
Saline	6	Carroll	1
Crittenden	5	Cleburne	1
Cross	4	Cleveland	1
Faulkner	4	Desha	1
Greene	4	Logan	1
Lawrence	4	Madison	1
Poinsett	4	Monroe	1
Fulton	3	Newton	1
Garland	3	Polk	1
Hempstead	3		