



# ALC - Game & Fish/State Police Subcommittee Meeting



*October 7, 2025*

# Rivers and Streams

-  Rivers & streams
-  Municipal boundaries

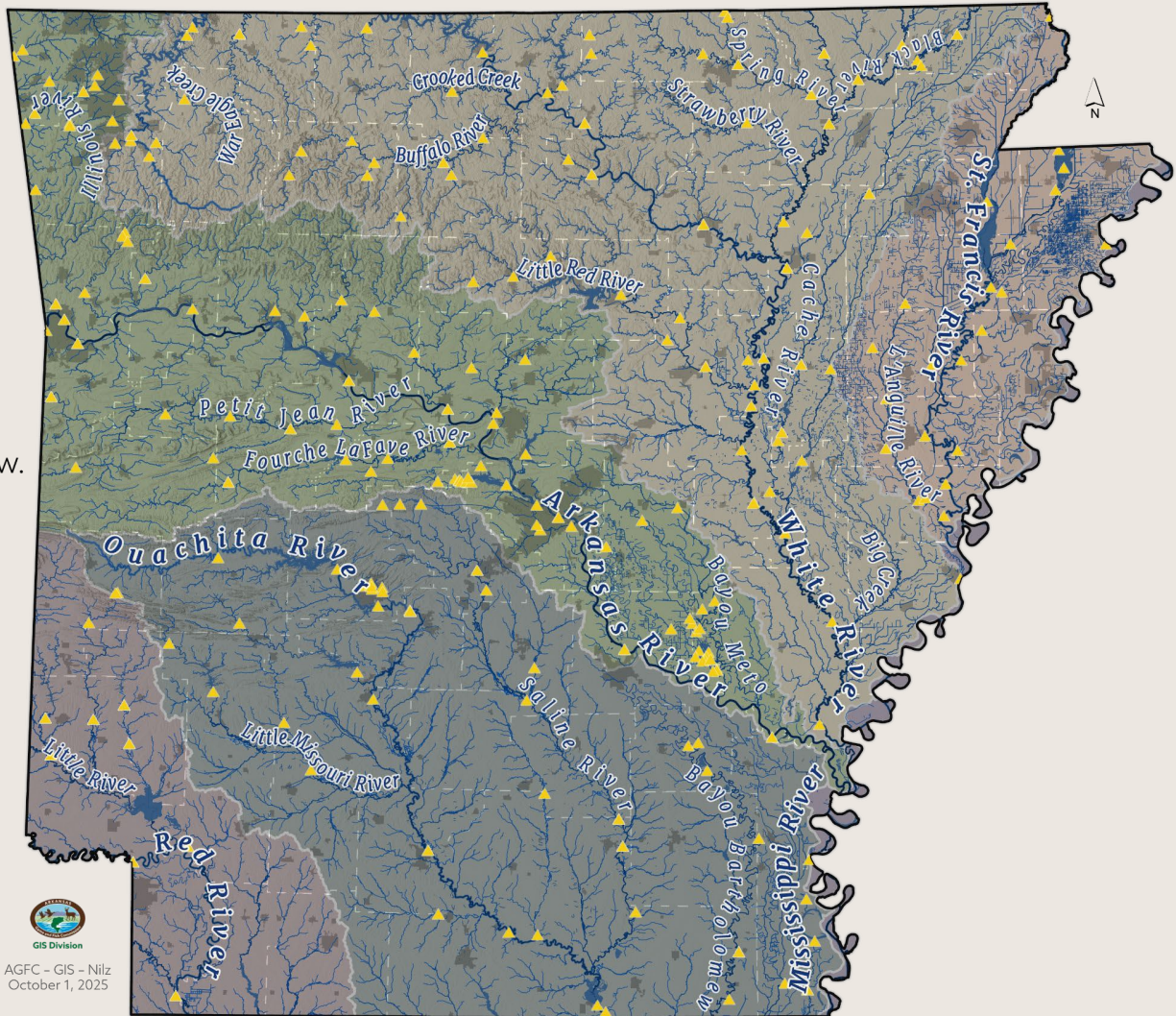
Stream labels read in the direction of water flow.  
Background color depicts major river basin.



# Rivers and Streams

- ▲ USGS Stream gauges, active
- ~ Rivers & streams
- ▬ Municipal boundaries

Stream labels read in the direction of water flow.  
Background color depicts major river basin.

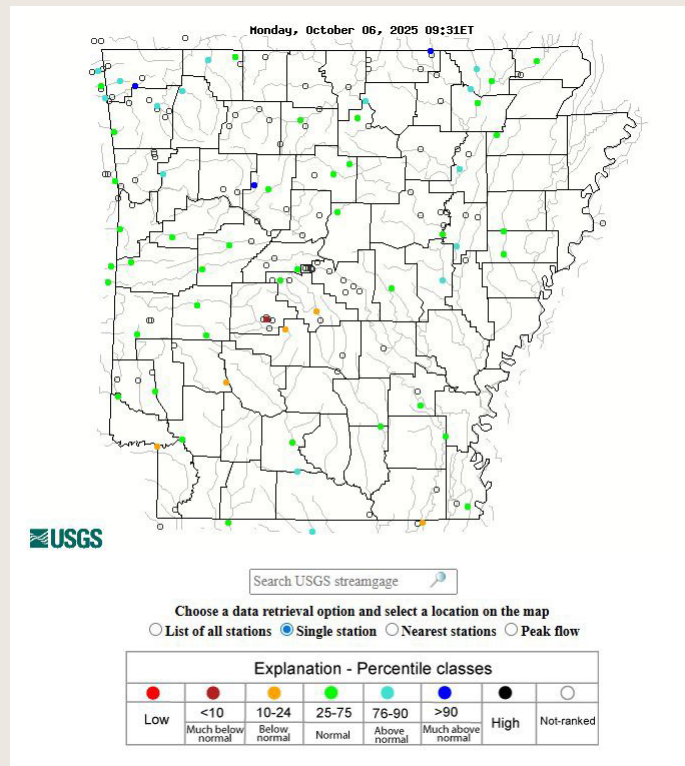


# Additional Resources



## Arkansas Stream Info & Gauges:

- [Ozark Creek Information Summary](#)
- [American Whitewater - Arkansas Page](#)
- [Arkansas USGS Gauges](#)
- [Arkansas Water Trails](#)
- [US Army Corp Little Rock District - MKARNS gages](#)



# What AGFC Does on Rivers



- Manage & regulate fishing opportunities.
- Create public recreational access to streams and rivers.
- Provide Enforcement support for safety of boaters.
- Assist or lead accident investigation, rescue, and recovery efforts.

# 2025 Water Rescue Example



- Between Friday, April 4 and Sunday, April 6, AGFC Enforcement assisted in 26 water rescues across many counties:
  - Randolph = 7
  - Conway = 6
  - Sharp = 4
  - Hot Spring = 3
  - White = 3
  - Lonoke = 2
  - Pulaski = 1

*The Arkansas Game and Fish Commission's mission is to conserve and enhance Arkansas's fish and wildlife and their habitats while promoting sustainable use, public understanding and support.*

