

ACCOUNTABILITY & ACHIEVEMENT

February 3, 2026



2026 EDUCATIONAL ADEQUACY STUDY

1

“ Adequacy Study Statute

Ark. Code Ann. § 10-3-2102(f)(2)-(5)

- (2) Reviewing the **Arkansas academic standards** developed by the Division of Elementary and Secondary Education;
- (3) Reviewing the **Arkansas Educational Support and Accountability Act, § 6-15-2901 et seq.**;
- (4) Reviewing **fiscal and facilities distress programs**;
- (5) Reviewing the **state's standing under the Elementary and Secondary Education Act of 1965, Pub. L. No. 89-10, as reauthorized by the Every Student Succeeds Act, Pub. L. No. 114-95**

2

2



Working Definition of “Educational Adequacy”

As adopted by the Education Committees, 2018

- I. The standards included in the state’s curriculum and career and technical frameworks, which define what Arkansas students are to be taught, including specific grade level curriculum and a mandatory thirty-eight (38) Carnegie units defined by the Arkansas Standards of Accreditation to be taught at the high school level;
- II. The standards included in the state's testing system. The goal is to have all, or all but the most severely disabled, students perform at or above proficiency on these tests; and
- III. Sufficient funding to provide adequate resources as identified by the General Assembly



3

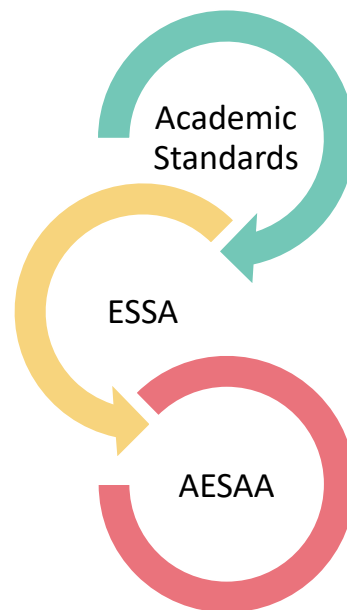
3

ROADMAP

- Academic Standards
- Every Student Succeeds Act (ESSA)
- Arkansas Educational Support and Accountability Act (AESAA)

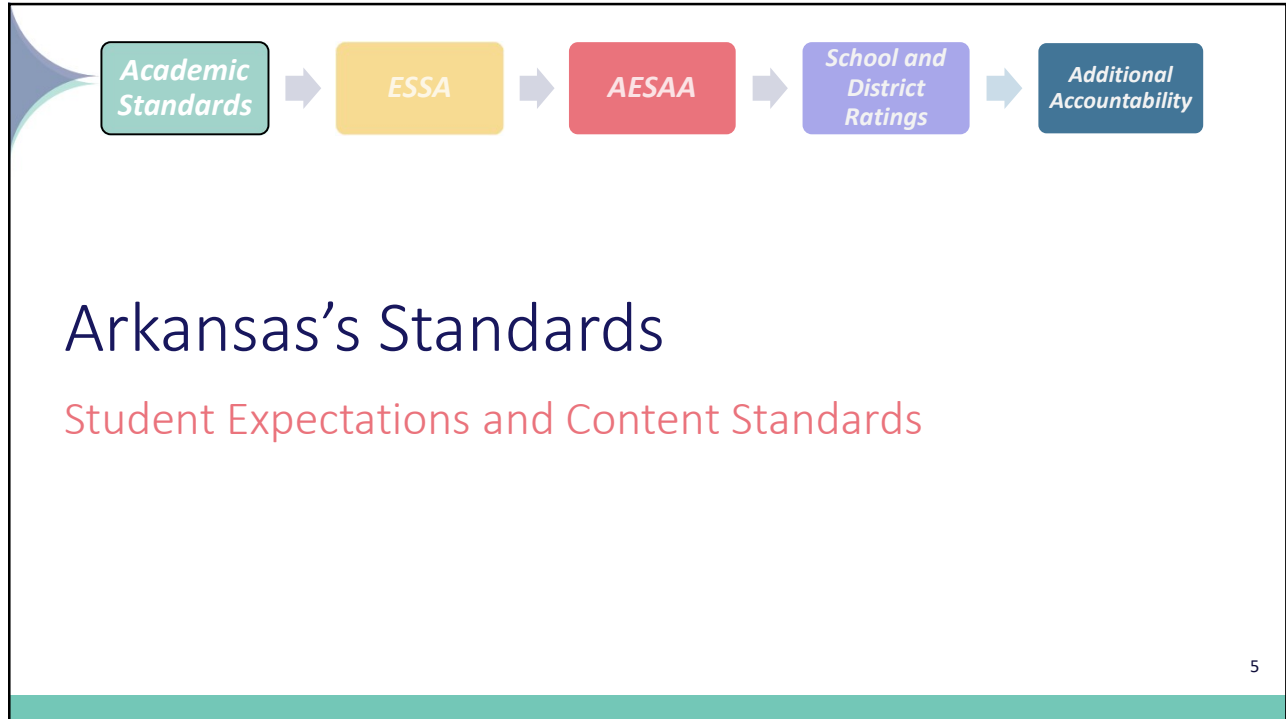
- Related Accountability Measures
 - School Performance Ratings
 - District Letter Grades

- Fiscal Distress
- Facilities Distress

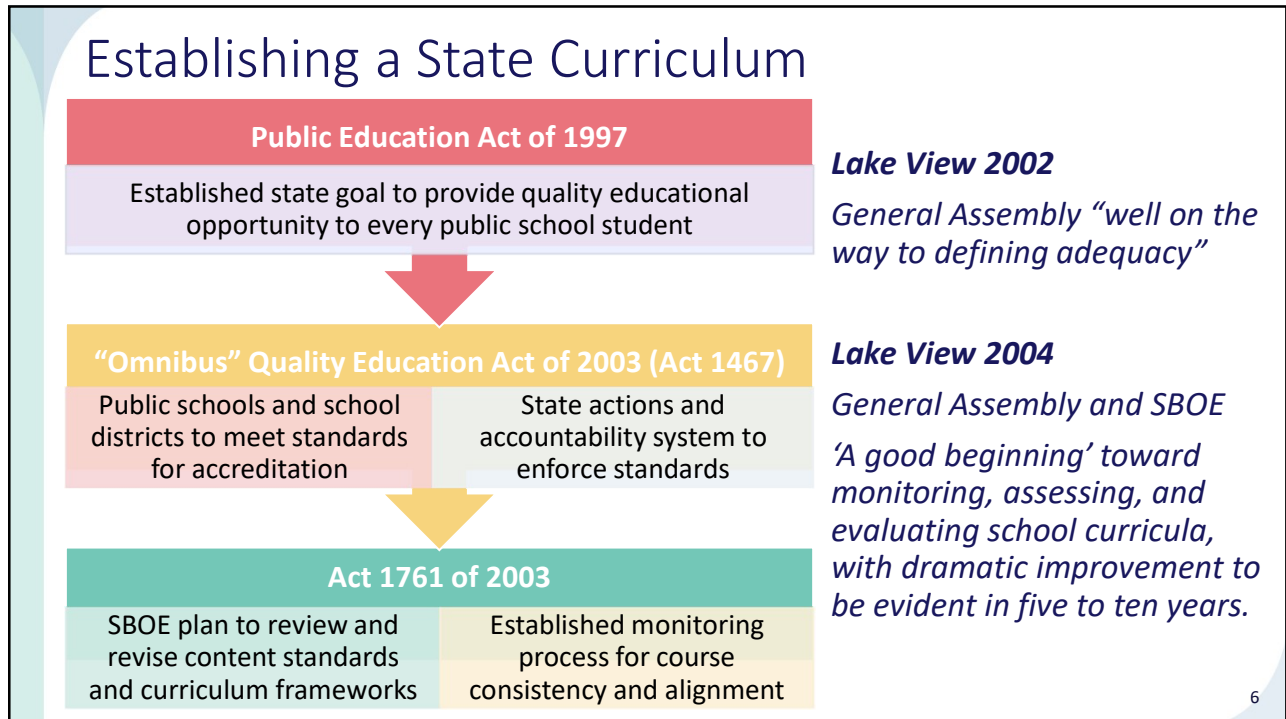


4

4



5



6

Arkansas Public Education Act of 1997

Goals for the State of Arkansas and its public schools

- Raise student academic achievement in the **basic curriculum**
- Increase the number of students who complete the **courses required for graduation**; and
- Ensure that students graduate with the **knowledge and preparation to be contributing members of society**
- Graduate academically competent students
- Have qualified teachers and administrators
- Provide a safe, efficient, and accountable program, and
- Be supported by and assisted by the state

7

7

Arkansas Public Education Act of 1997

To provide a quality educational opportunity to every public school student

- **Achieve competency** in the basic core of knowledge and skills
- **Meet required standards in academic areas** of the curriculum
 - a basis for students to pursue immediate and lifelong educational and employment opportunities
- Language arts, writing, spelling, speaking, listening, and reading;
- Math, computation, measurement, probability and statistics;
- Problem solving, basic algebra, data analysis, and geometry concepts;
- Science, physical and life science knowledge and scientific problem solving; and
- Social studies, history, geography, economics, and civic education.

8

8

“Omnibus” Quality Education Act of 2003

All students in the public schools of this state have an equal opportunity to demonstrate grade-level academic proficiency

*through the application of knowledge and skills in the **core academic subjects consistent with state curriculum frameworks, performance standards, and assessments***

- Required standards for accreditation
 - “no curricula, student performance, school performance, or any standard required by law may be waived for any time period”
- Established single comprehensive accountability system based on Arkansas curriculum frameworks
- Requirements from ESEA, reauthorized as No Child Left Behind
- Established state actions for districts in fiscal and academic distress

9

9



Definition of “Educational Adequacy”

Adopted by the Joint Committee on Educational Adequacy

2003

The **standards included** in the **state’s curriculum** which define what Arkansas students are to be taught



2006

...including specific grade level curriculum and a mandatory thirty-eight (38) Carnegie units **defined by the Arkansas Standards of Accreditation to be taught at the high school level**



10

10

Act 1761 of 2003

DESE Rules "Comprehensive Plan for Consistency and Rigor in Coursework"

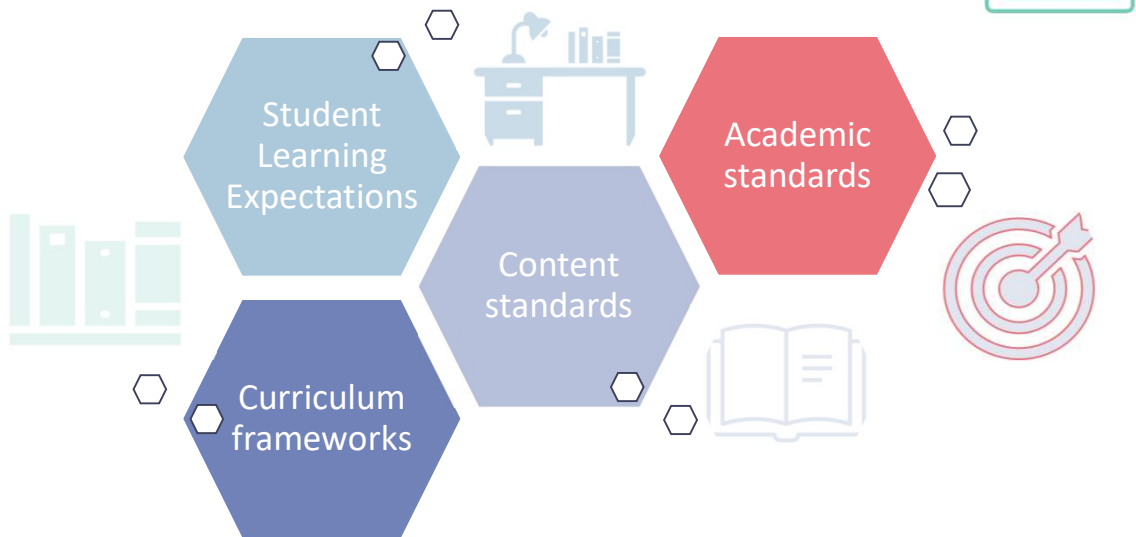
Required assurance of course content and subject area alignment to the Academic Content Standards and Curriculum Frameworks

"Core Academic Areas"

- Reading
- Writing
- Mathematics
- Science
- History
- Geography
- Civics
- Other courses identified by the SBOE as state-mandated graduation requirements

11

➤ Quick Terminology



12

Defining Academic Standards

Content and Accreditation Standards

13

13

➤ Quick Terminology



“The academic system of a public school district ensures all students have access to a guaranteed viable curriculum aligned to the Arkansas academic standards for all academic areas.”

“Written curriculum”

- identified sequences of student learning expectations, pacing, materials and resources used to teach the Arkansas academic standards
- processes for evaluating mastery of the standards at particular points in time throughout the K–12 educational program

14

14

DESE's Academic Standards

“Define what students shall know and be able to demonstrate in each content area”

- Academic standards
 - ✓ Established by DESE
 - ✓ Approved by SBOE
- Standards and courses outline academic expectations in the state
- Review and revision to ensure
 - ✓ Rigorous
 - ✓ Prepare students for college, career, and community engagement
- Computer science
- English language arts (ELA)
- Fine arts
- Health & Physical education (P.E.)
- Library Media
- Mathematics
- Science
- Social studies
- World languages

“Arkansas academic standards”

Periodic Review and Revision, DESE Rules Governing the AESAA

Review and Input

- By Arkansas educators from elementary, secondary, and higher education;
- From Arkansas community members with professional experience related to the academic content area

Study and Consideration, as appropriate

- Of academic standards at the national and international level
- Of an evaluation of the academic standards from national groups or organizations

Public Dissemination of Revised Standards



Reviewing Standards for Accreditation

Required Instruction & Pathways to Graduation

17

17

ARKANSAS'S STANDARDS

Reviewing the Standards for Accreditation

- SBOE promulgates rules
 - Definitions and meaning of relevant terms
- DESE develops and reviews the standards through a process including SBOE approval

2015
Changed courses considered taught

2018
Realigned to AESAA systems
Removed specific content standards and courses

18

18

Required Curriculum

“An adequate education”

To ensure that all students have **equal opportunity and access** to the state curriculum:

- Public school district’s board of directors must annually adopt and implement a curriculum aligned to the Arkansas academic standards
- Superintendents must submit written assurance each year

By Grade Level

- Kindergarten – Grade 4
- Grades 5 – 8
- Grades 9 – 12

Required Curriculum

By Content Areas

English Language Arts (ELA)

Mathematics

Science

Fine Arts

Social Studies

Health & Safety and Physical Education (P.E.)

Grades 5-12 { **Career and Technical Education (CTE)**

Career and Technical Education (CTE)



Working Definition of “educational adequacy”

“Standards included in the state’s curriculum and **career and technical frameworks**”



Grades 5 – 8

- Minimum of 4 career awareness and exploration activities
 - ✓ Approved by DCTE
- Links what a student does in school and what a student wants to achieve in life

Grades 9 – 12

- Minimum of 9 sequenced CTE courses
- Three programs of study from 3 different pathways
 - ✓ Approved by DCTE
 - ✓ High-wage, high-growth designated by ADE
- Revised in 2025
 - Full implementation by 2029

Source: 6 CAR § § 61-202(a)(3)(vii) and 106-103.
6 CAR § 61-202(a)(4)(B)(9).

Required Annual Instruction

Kindergarten – Grade 8

- Arkansas History
 - Unit in social studies (with emphasis in grades 4 and 5)
 - Semester course (taken in either grade 7, 8, 9, 10, 11, 12)
- Instructional Time for Recess
- Music & Visual and performing arts (grades 1-8)
- Physical education/activity



Content Area	Grade Levels
English Language Arts	K-4,5-8
Mathematics	K-4,5-8
Social Studies	K-4,5-8
Science	K-4,5-8
Fine Arts	K-4,5-8
Health and Safety and P.E.	K-4,5-8
Career and Technical Education	5-8

Source: 6 CAR § 61-202(a)(1)-(2)

Source: 6 CAR § § 61-202 and 106-103

38 Units Required to Offer in Grades 9-12

Standard 1-A Curriculum and instruction	
English language arts (6 units)	Foreign language (2 units)
Mathematics (6 units)	Computer science (1 unit)
Science (5 units)	Health and safety education and physical education (1 ½ units)
Social studies (4 units)	Career and technical education (9 units) <i>courses representing three programs of study where each program of study represents at least three units of sequenced courses</i>
Fine arts (3 ½ units)	

Source: 6 CAR § 61-202(a)(4)(B)

23

23

REQUIRED HIGH SCHOOL COURSE OFFERINGS

From Teach to Offer

- Schools must offer each year
- Standards requirement
 - Scheduled academic calendar
 - Employed properly licensed teacher
 - No eligible students enroll or remain in enrolled
- Considered as taught
 - No students sign up

2007-2017		
Allowed combined and embedded course content	Required 2 more course credits for graduation	Required AP Courses
2017-2025		
Added career-ready pathways to diploma	Required community service hours for graduation	



Working Definition of "educational adequacy"

"...and a mandatory thirty-eight (38) Carnegie units defined by the Arkansas Standards of Accreditation to be taught at the high school level"

Source: 6 CAR § 61-202(a)(4)(B)

24

24

REQUIRED HIGH SCHOOL COURSE OFFERINGS

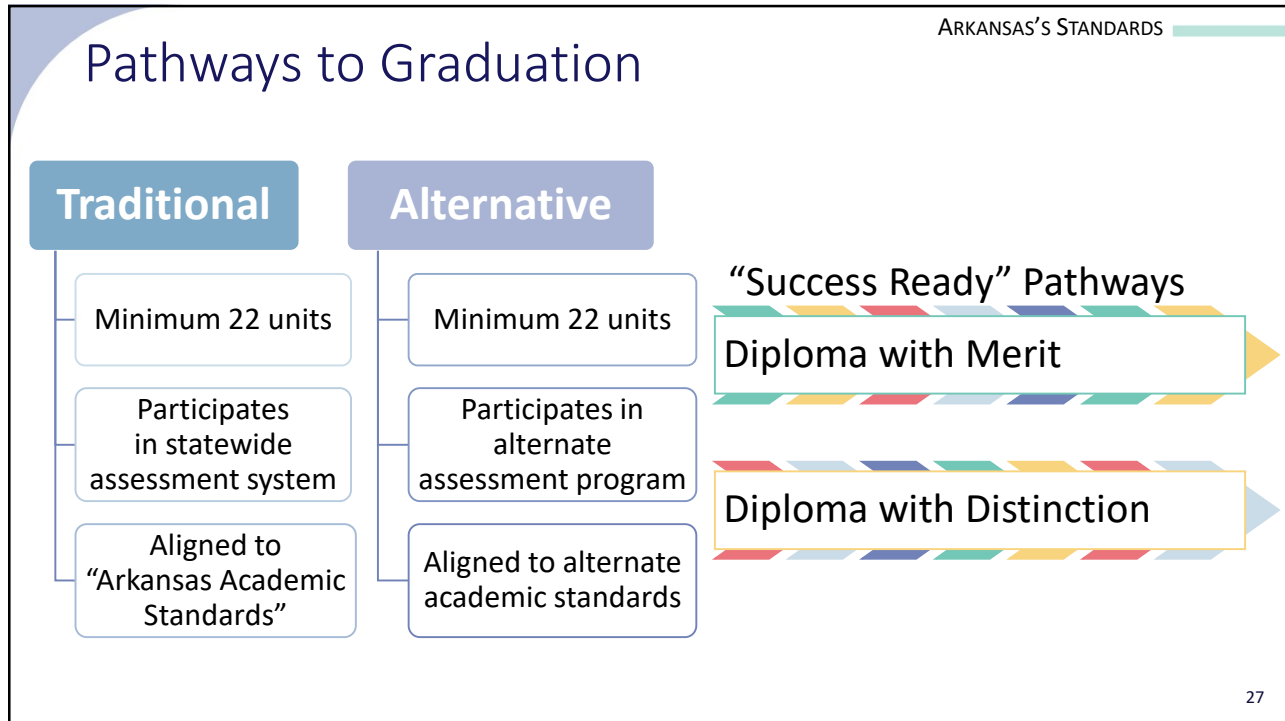
DESE's Arkansas Required High School Courses Formerly the Required 38

- Course offerings and substitutions approved by SBOE
- Published in DESE's Required High School Courses each school year
- **38.5** total required credits
- 38 units from Standards for Accreditation + semester course in oral communication
- Must offer "accelerated courses"
 - AP, IB, Cambridge AICE, Concurrent
 - Other SBOE-approved program
- In core academic areas
 - ✓ Math
 - ✓ ELA
 - ✓ Science
 - ✓ Social Studies

Comparison of Required High School Courses

By Required Units of Credit


Required for Schools to Offer		Required for Students to Graduate	
6.5	ELA, must offer oral communication (<i>semester course</i>)	4	ELA
5	Math	4	Math
5	Science	3	Science
4	Social Studies	3	Social Studies
3.5	Fine Arts	0.5	Fine Arts
2	Same world language		
0.5	Health and wellness (<i>semester course</i>)	0.5	Health and safety education (<i>semester course</i>)
1	Physical education (2 <i>semester courses</i>)	0.5	Physical education/activity (<i>semester course</i>)
1	Computer Science	-	
9	Sequenced CTE courses, must offer at least one high wage pathway	6	Career Focus or content electives
		0.5	Oral communication (<i>semester course</i>)
38.5	Total Units to Offer in Courses	22	Total Units to Acquire in Courses



27

➤ Quick Terminology

Career and Technical Education



"Credential of value"

- A **certification, credential, or license** aligned to a **high-wage, high-growth** career as defined by the Division of Higher Education in conjunction with other agencies represented in the Governor's Workforce Cabinet

"Success-ready"

- A student graduating with knowledge, skills, abilities, and habits to succeed on their chosen path, with options including **enlistment, enrollment, or employment**

28

28

Career Ready Pathways to Diploma

A public school student in a “career-ready” pathway shall complete:

- The minimum academic core of courses as required for high school graduation; and
- A career and technical sequence of courses or an approved training program that leads to an approved, industry-based credential in a high-wage, high-growth field

Career-Ready

- Minimum academic core;
- A sequence of career and technical education courses in a program of study aligned with high-wage, high-demand jobs in Arkansas; and
- The opportunity to earn a credential of value”

6 CAR § 106-104(c)

29

29

Statutory Requirements

Act 134 of 2025

Compare and contrast the resiliency of the U.S. constitutional republic with the failures of communism and autocratic government systems

Into existing social studies standards and courses

- Grades 7-12
- Reviewed and updated before the 2026-27 school year

Act 478 of 2025

Religious and moral beliefs of the founding fathers, including their influence on the founding documents of the United States

Into existing social studies standards and courses

- Grades 6-12

Act 647 of 2025

A unit dedicated to veterans and their families

Within existing Arkansas history course content guidelines

RELATED 2025 LEGISLATION

Additional Content Embedded by Law

30

30

Additional Statutory Requirements

RELATED 2025 LEGISLATION

Additional Content Embedded by Law

At the earliest grade appropriate

Act 229 of 2025

Instruction on firearm safety

Beginning with the 2025-2026 school year

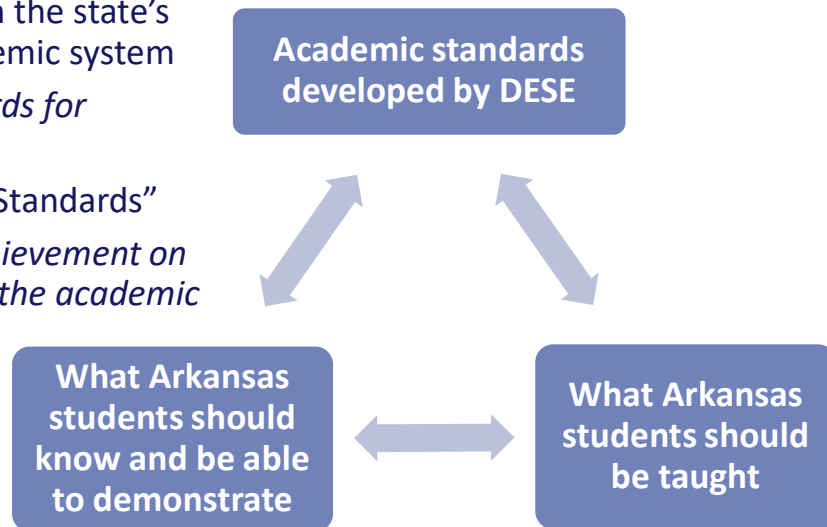
Act 915 of 2025

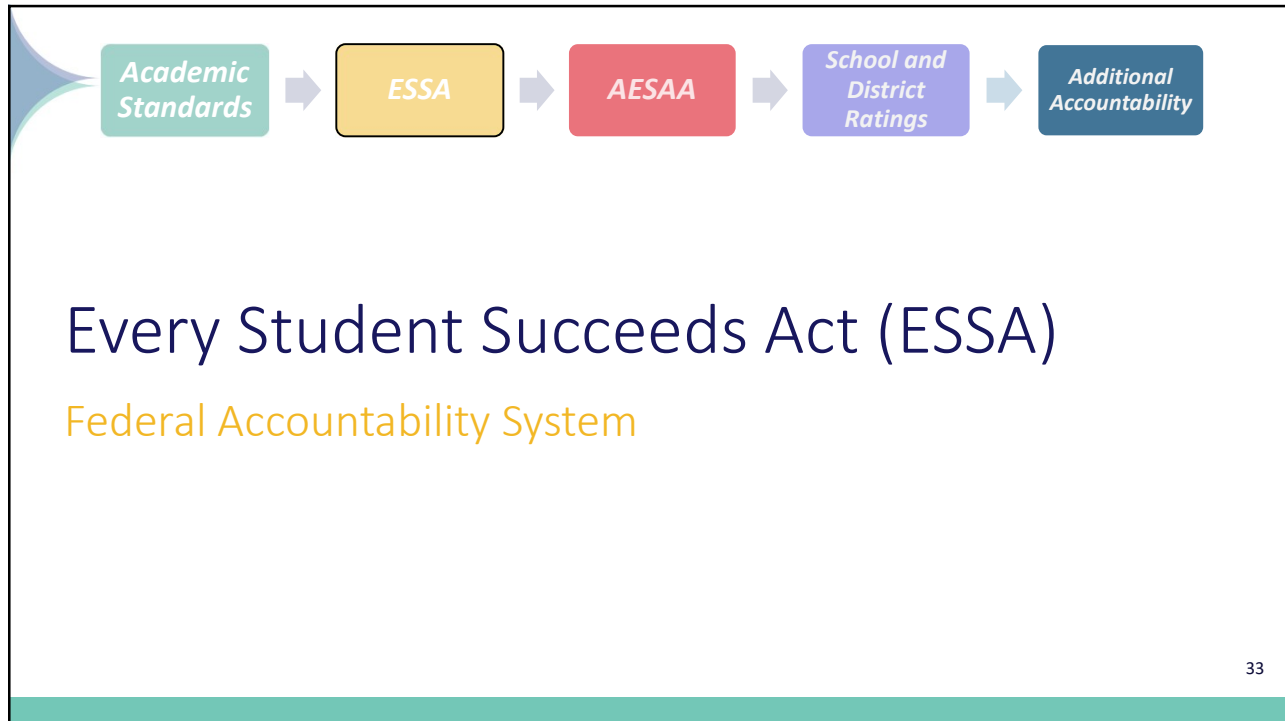
Discussion of human fetal growth and development

In the relevant standards during the Arkansas Academic Standards revision cycle

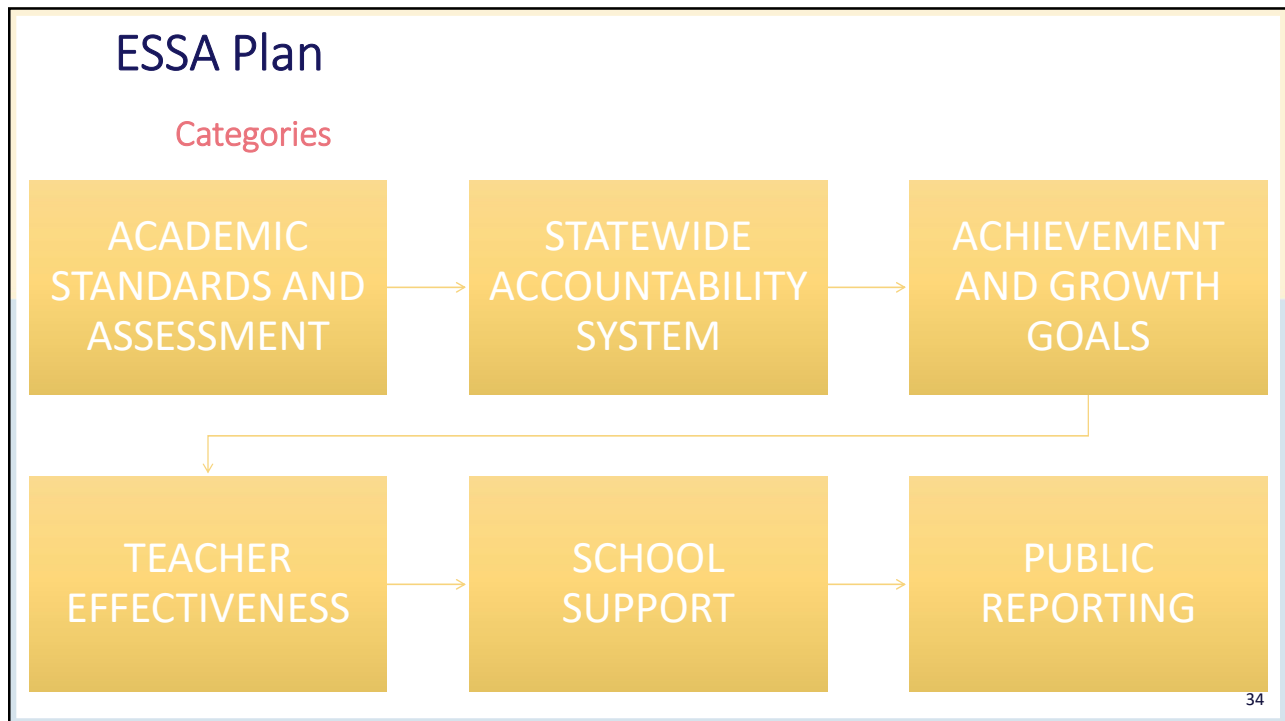
Reviewing the Arkansas Academic Standards

- Standards included in the state's curriculum and academic system
Defined by the Standards for Accreditation
- "Arkansas Academic Standards"
Defined by student achievement on assessments based on the academic standards






33



34



ESSA Requirements

Per Arkansas State ESSA Plan, Last Approved in 2022

ESSA Requirements	Arkansas ESSA Plan
<ul style="list-style-type: none">▪ Challenging Academic Standards in English language arts or reading, mathematics, and science▪ Must contain at least three levels of achievement	<ul style="list-style-type: none">▪ Administer assessments to at least 95% of all students annually▪ Arkansas’s summative assessments in English language Arts (ELA), Math, and Science have four levels of achievement

35

35



ESSA Requirements

Per Arkansas State ESSA Plan, Last Approved in 2022

ESSA Requirements	Arkansas ESSA Plan
<ul style="list-style-type: none">▪ Statewide accountability system based on the state academic standards	<ul style="list-style-type: none">▪ Arkansas Educational Support and Accountability Act

36


36



ESSA Student Achievement Progress

ESSA FEDERAL ACCOUNTABILITY SYSTEM 37

37



ESSA Long-Term Achievement Goals – By 2030

Per Arkansas State ESSA Plan, Last Approved in 2022

ESSA Requirements	Arkansas ESSA Plan 12-Year Goals
<ul style="list-style-type: none">• Proficiency on annual assessments• Progress towards achieving English language proficiency• High school graduation rates	<ul style="list-style-type: none">• 80% of students achieving a test-based grade-level proficiency score• 52% of English language students on track to English language proficiency• 94% for 4-year adjusted cohort rate• 97% for 5-year adjusted cohort rate

38

38

ESSA Long-Term Achievement Goals – By 2030

Per Arkansas State ESSA Plan, Last Approved in 2022

ESSA Requirements

- Student growth or another indicator allowing for meaningfully differentiating school performance
- Include economically disadvantaged students, students from major racial and ethnic groups, children with disabilities, and English learners

Arkansas ESSA Plan

ESSA School Index Score:

- Academic achievement
- English language proficiency
- Graduation rates
- School Quality and Success Indicator

ESSA Student Subgroups:

- African American students
- Hispanic/Latino students
- White students
- Economically Disadvantaged students
- English Learner students
- Students with Disabilities

39

39

ATLAS Student Performance Levels

Demonstrated Understanding of Knowledge and Skills Required of the Grade-Level Standards

At Level 1 students will require significant support/ scaffolding and intervention.

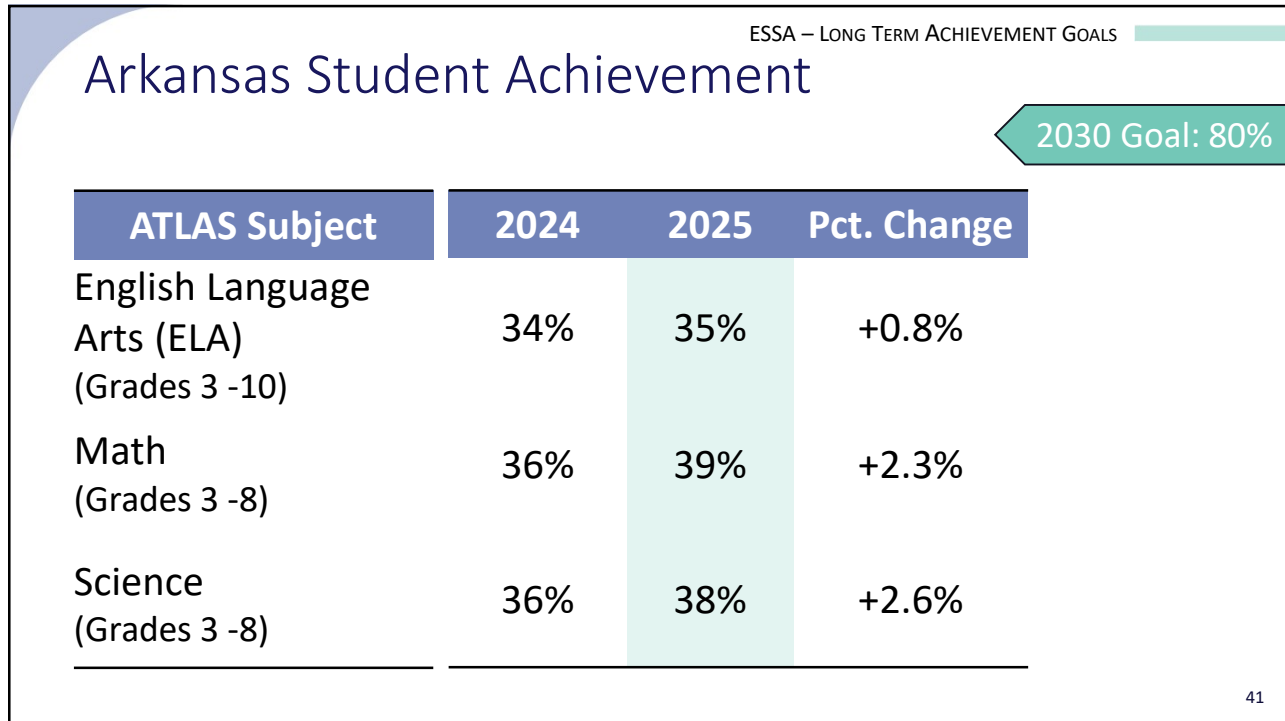
At Level 2 personalized support and intervention may be needed.

At Levels 3 and 4 students show mastery of grade-level standards and are on track for career and college and demonstrate readiness for content at the next grade/course.

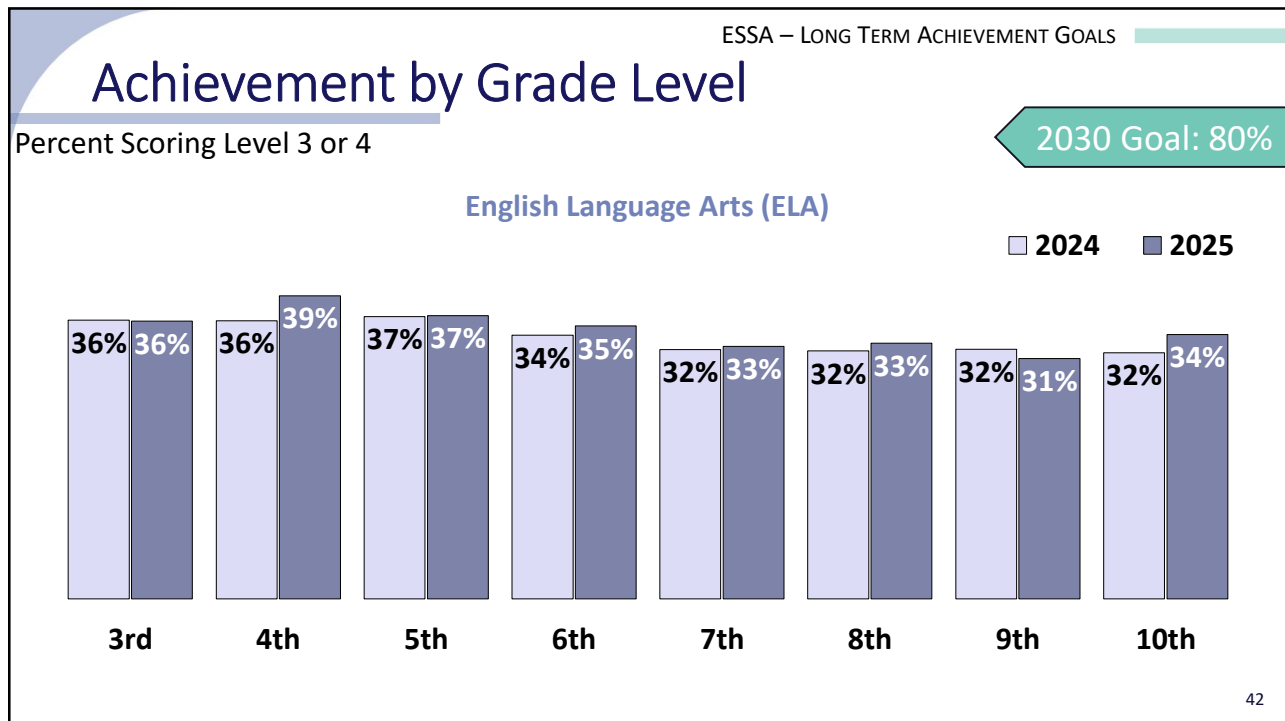
Source: Performance Standards. [AR-ATLAS_SY2023-2024_Annual Technical Report_FINAL_03.18.2025.pdf](#)

40

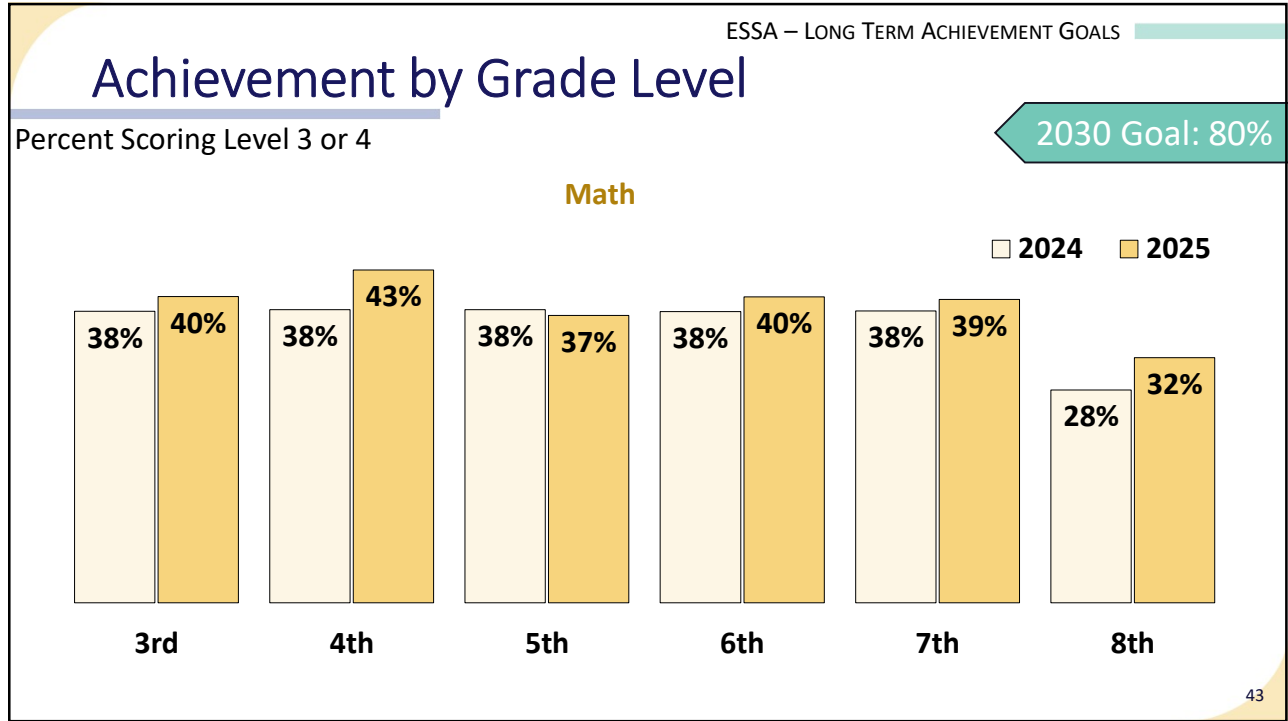
40



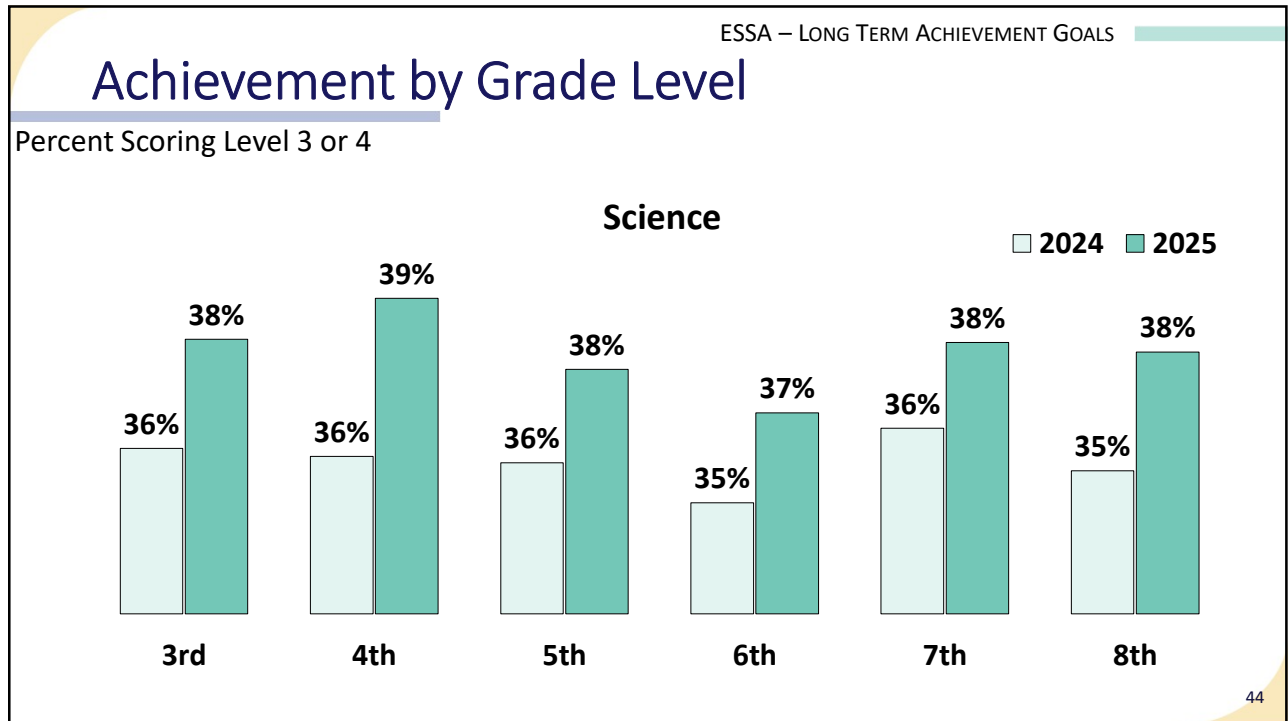
41



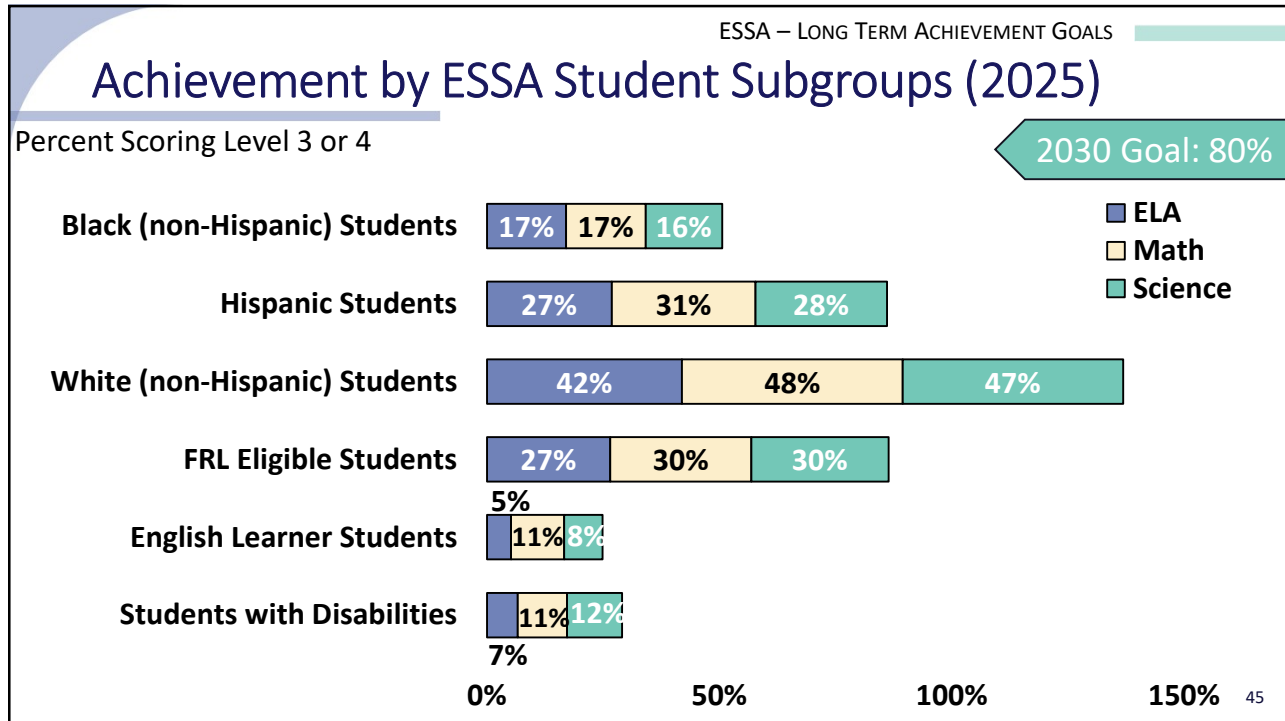
42



43



44



45

ESSA – LONG TERM ACHIEVEMENT GOALS

English Language Proficiency

English Learners on Track to English Language Proficiency 2030 Goal: 52%

To be considered on track to English language proficiency, an English learner must meet one of the following criteria:

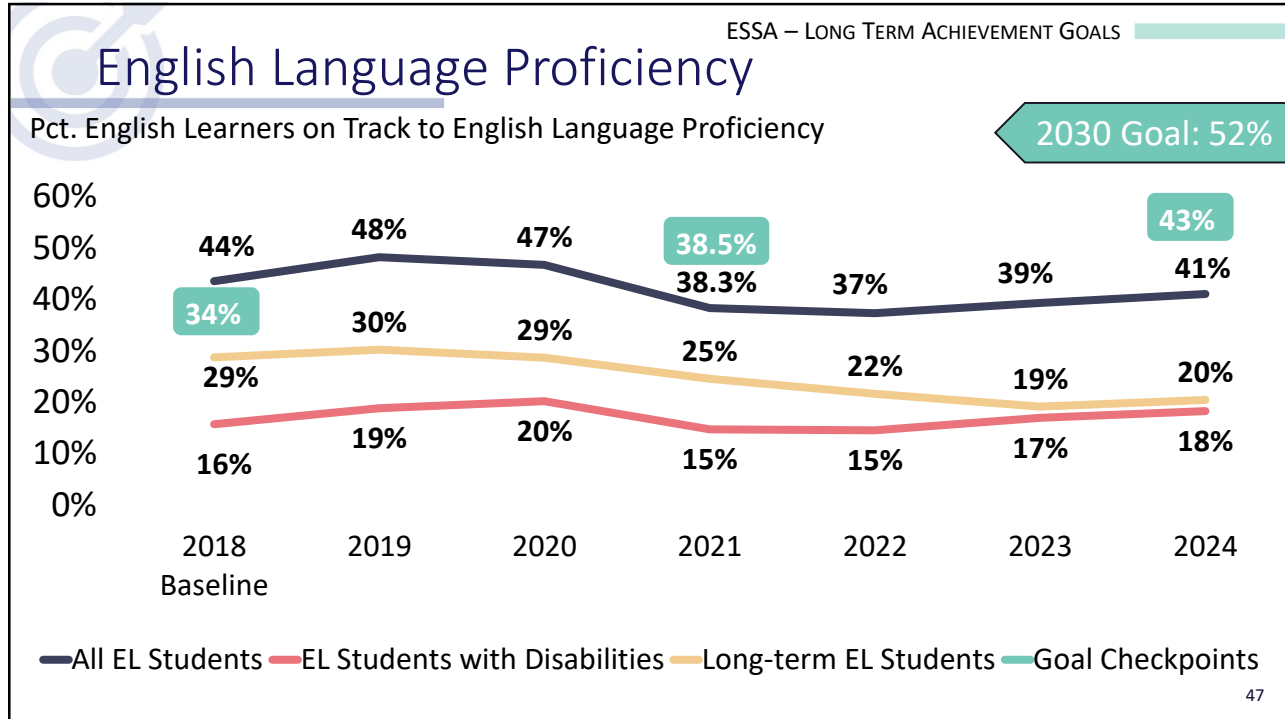
- Exits English Learner status
- Meets time expectations on three or more ELPA21 domains
- Meets time expectations on all nonexempt ELPA21 domains (if the EL student has at least one domain exemption)

ELPA21

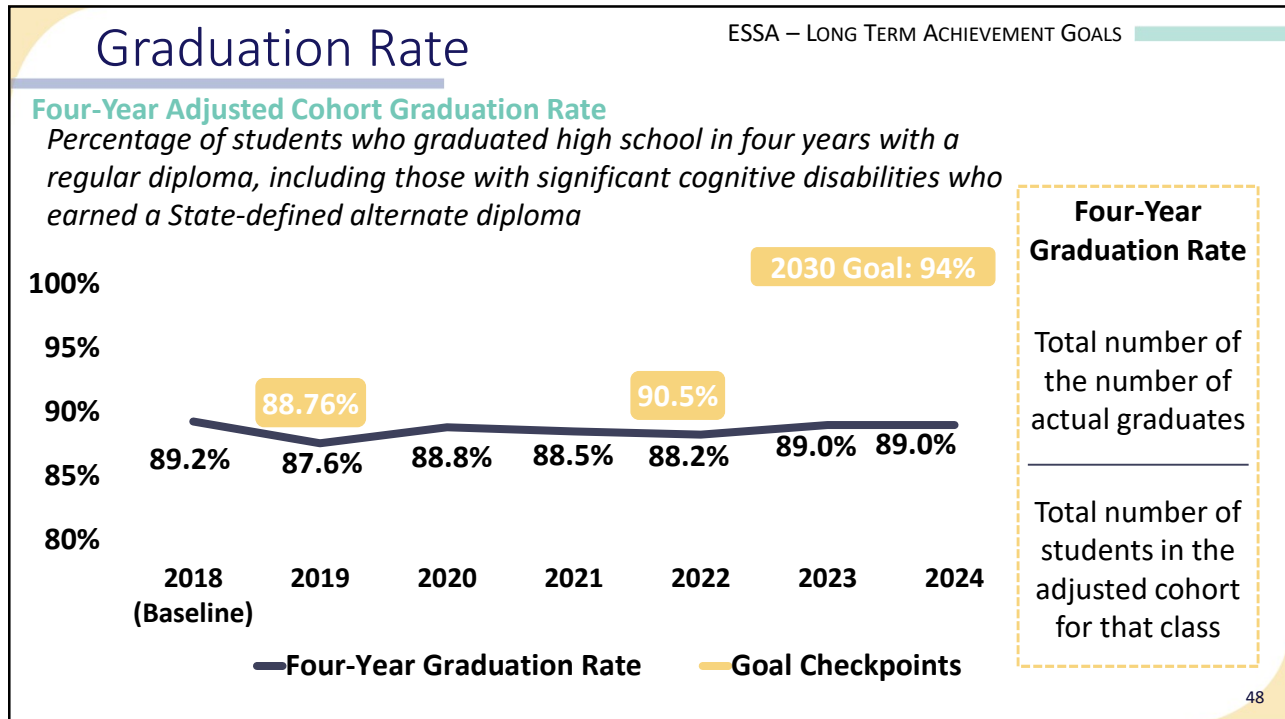
The English Language Proficiency Assessment for the 21st Century (ELPA21) is the assessment used in Arkansas to measure English language proficiency in English learners.

46

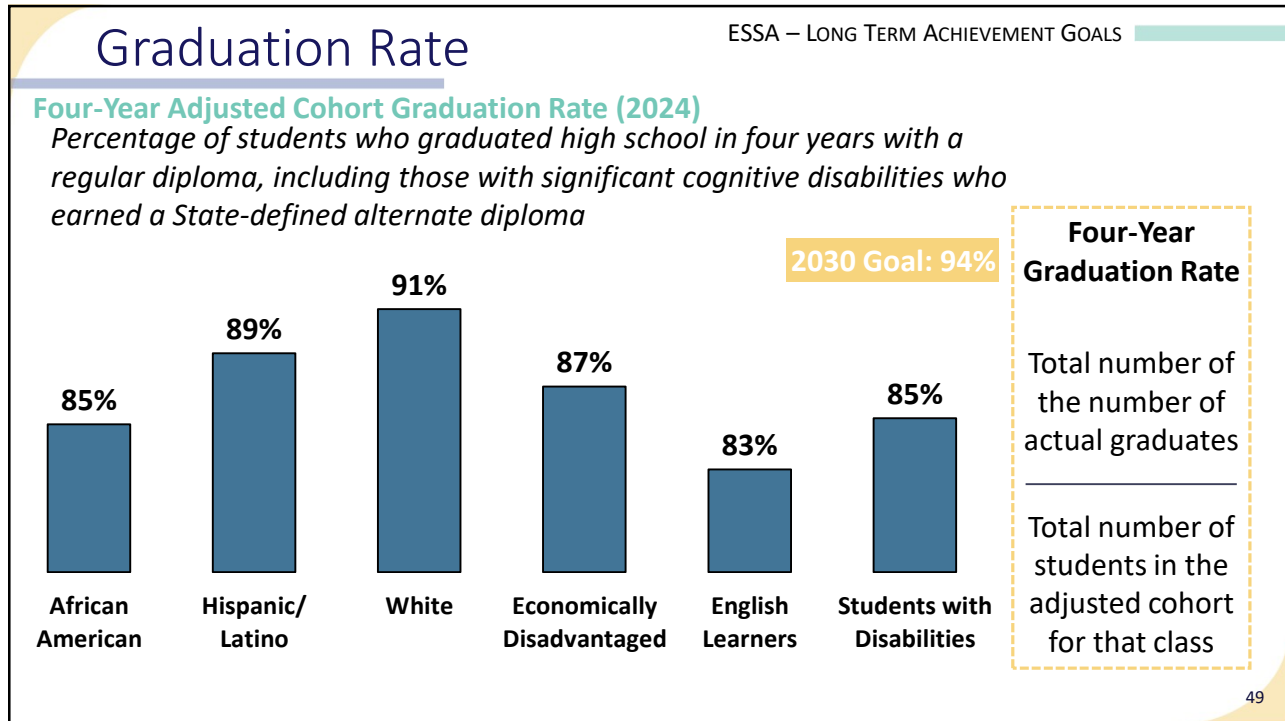
46



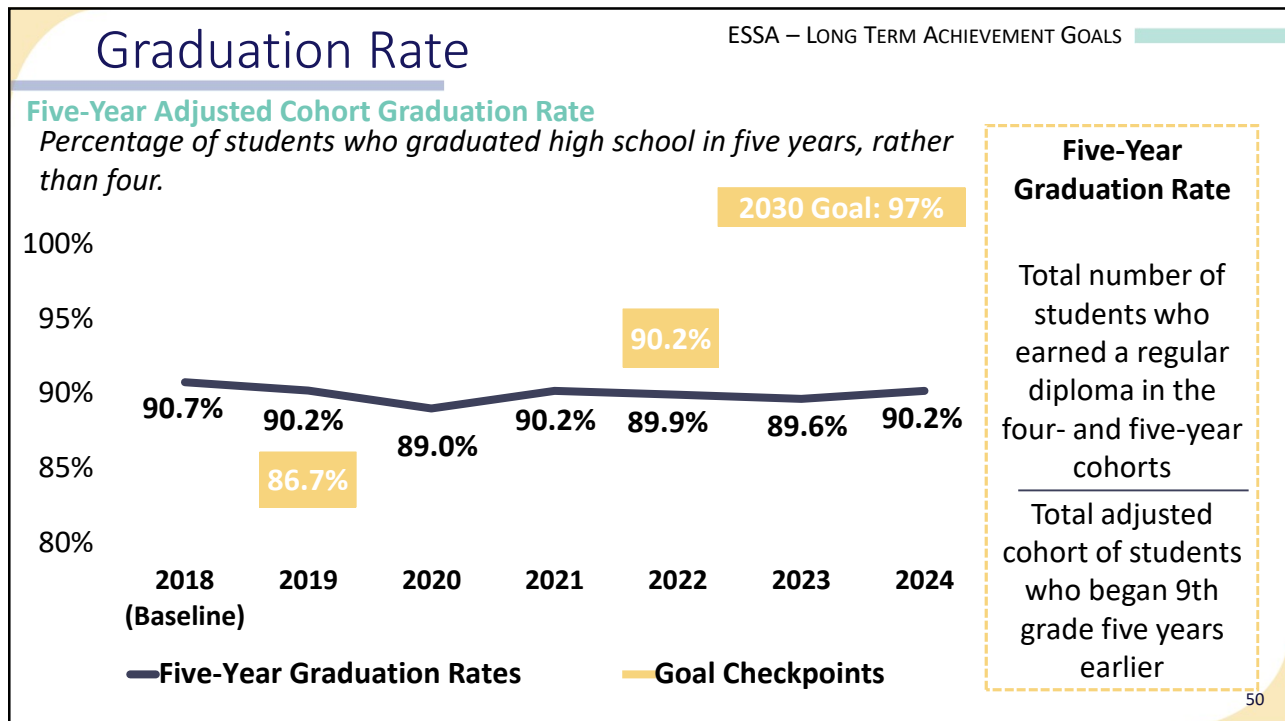
47



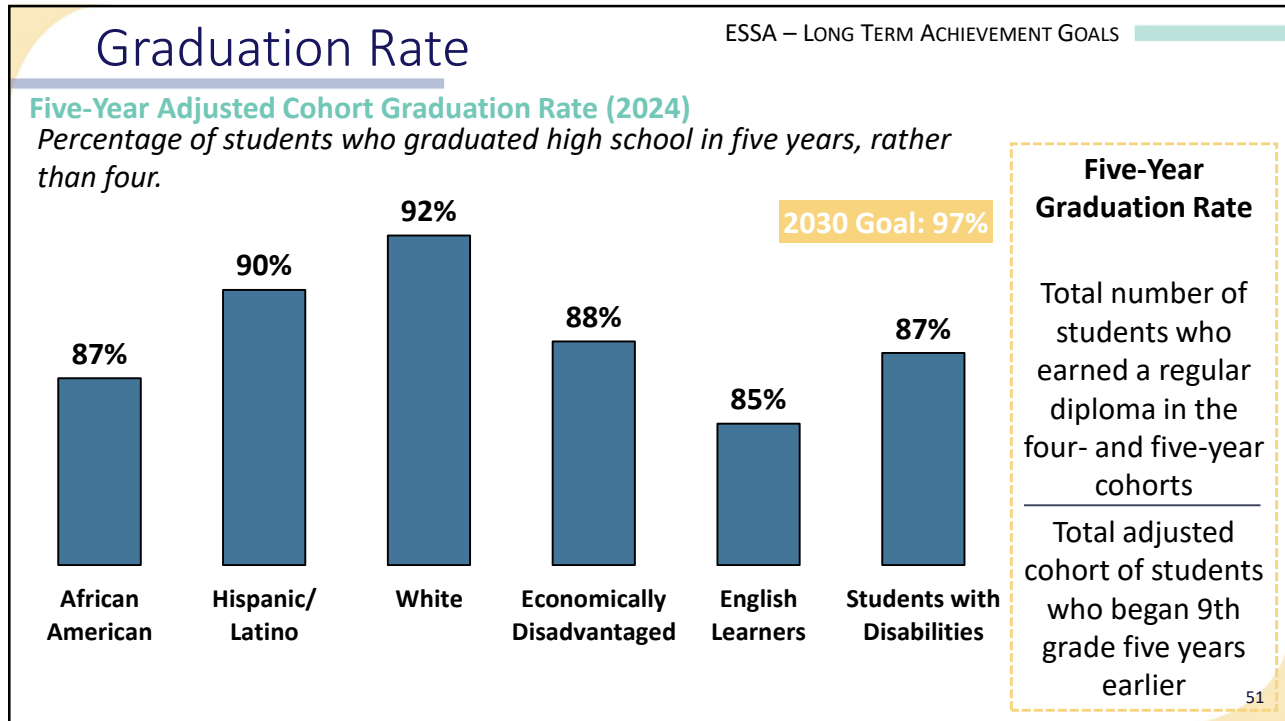
48



49



50



51

Student Achievement

School Support and Improvement


Access to Educators

State's Standing

School Support and Improvement Activities

ESSA
FEDERAL ACCOUNTABILITY SYSTEM
52

52



ESSA School Support Requirements

Per Arkansas State ESSA Plan, Last Approved in 2022

ESSA Requirements

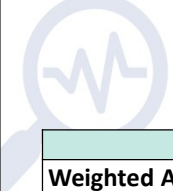
- Must identify levels of support

Arkansas ESSA Plan

- Three categories of school support
- Exit criteria requires a school to
 - Demonstrate continued progress by exhibiting an upward trend on the ESSA School Index for 2+ years; and
 - Meet or exceed their initial ESSA School Index score
- ADE will support districts in providing all children significant opportunities to receive a fair, equitable, and high-quality education, and to close educational achievement gaps

53

53



School Ratings – ESSA School Index

ESSA School Index is part of the state’s ESSA plan and the method for meaningfully differentiating schools as required under ESSA

ESSA School Index Indicators			
Weighted Achievement (English Language Arts and Math)	All schools		
Growth (English Language Arts and Math)	All schools		
Progress to English Language Proficiency	All schools		
Four-year graduation rates	For high schools		
Five-year graduation rates	For high schools		
School Quality and Success Indicator Components include (without limitation)	<table style="width: 100%; border: none;"> <tr> <td style="width: 50%; border: none;"> <ul style="list-style-type: none"> ▪ Reading at grade level ▪ Achievement and growth in science ▪ Chronic absenteeism/ student engagement ▪ ACT Scores ▪ ACT Readiness Benchmark ▪ High School GPA </td> <td style="width: 50%; border: none;"> <ul style="list-style-type: none"> ▪ On-time credits earned ▪ Computer science credits earned ▪ Number of high school graduates earning one or more AP/IB/Concurrent credits ▪ Community service-learning credits earned </td> </tr> </table>	<ul style="list-style-type: none"> ▪ Reading at grade level ▪ Achievement and growth in science ▪ Chronic absenteeism/ student engagement ▪ ACT Scores ▪ ACT Readiness Benchmark ▪ High School GPA 	<ul style="list-style-type: none"> ▪ On-time credits earned ▪ Computer science credits earned ▪ Number of high school graduates earning one or more AP/IB/Concurrent credits ▪ Community service-learning credits earned
<ul style="list-style-type: none"> ▪ Reading at grade level ▪ Achievement and growth in science ▪ Chronic absenteeism/ student engagement ▪ ACT Scores ▪ ACT Readiness Benchmark ▪ High School GPA 	<ul style="list-style-type: none"> ▪ On-time credits earned ▪ Computer science credits earned ▪ Number of high school graduates earning one or more AP/IB/Concurrent credits ▪ Community service-learning credits earned 		

54

54

Required School Support and Improvement Activities

Targeted Support and Improvement

Schools that are consistently underperforming for one or more student subgroups

Comprehensive Support and Improvement

Title I schools in the lowest performing 5% of Title I schools in the state; all high schools that fail to graduate one-third or more of their students

Additional Targeted Support

Schools that, for any student subgroup, meet the criteria for the lowest performing 5% of Title I schools in the state for students overall

55

55

✓
Student
Achievement

✓
School Support
and Improvement


✓
Access to
Educators

●
State's
Standing

Equitable Access to Educators

ESSA

56



ESSA Equitable Access to Educators

Per Arkansas State ESSA Plan, Last Approved in 2022

ESSA Requirements

- Describe how the state will ensure low-income and minority students are not taught at a disproportionate rate by ineffective, out-of-field, or inexperienced educators

Arkansas ESSA Plan

- ADE will identify schools receiving Title I, Part A funds that have children who are being served at disproportionate rates by ineffective, out-of-field, or inexperienced teachers
- Districts with disproportionate rates will be required to attend an Equity Lab and develop a local equitable access plan and to direct funding and other resources, if necessary, to schools receiving Level 4 or 5 support

57

57

ESSA Requirement – Equitable Access to Educators

ADE will identify schools receiving Title I, Part A funds that have children who are being served at disproportionate rates by ineffective, out-of-field, or inexperienced teachers by using the following methods:

- A. School Report Card**
- B. High-Poverty/ High-Minority Report**
- C. Workforce Stability Index**
- D. Equity Labs**

58

58

➤ Quick Terminology



High Poverty Schools

Highest Quartile of Schools with Highest Percentages of Free and Reduced Lunch (FRL) Eligible Students

Low Poverty Schools

Lowest Quartile of Schools with Lowest Percentages of Free and Reduced Lunch (FRL) Eligible Students

ESSA REQUIREMENT – EQUITABLE ACCESS TO EDUCATORS

59

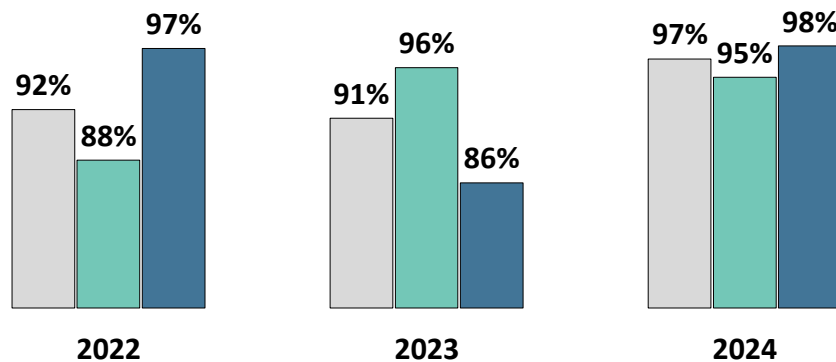
59

School Report Card Teachers Rated Effective or Above Under TESS

Teacher Excellence and Support System (TESS)

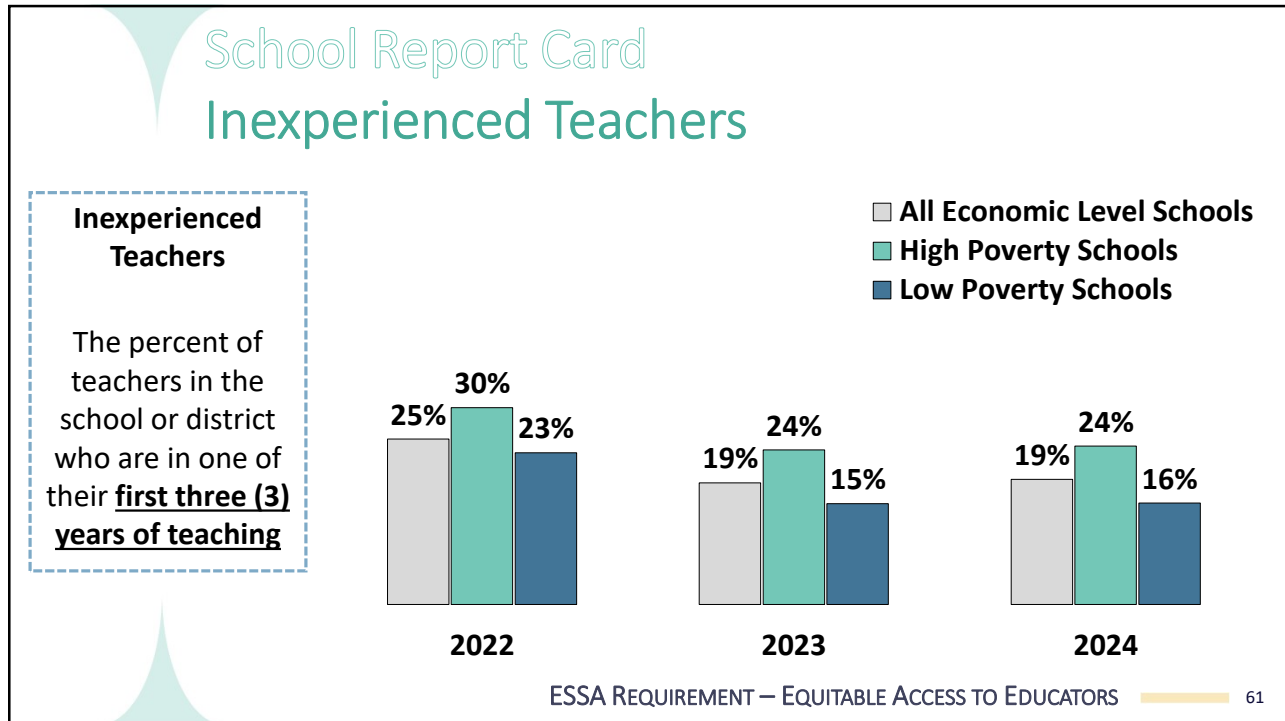
Provides a statewide system for observation and support of K-12 classroom and specialty teachers.

- All Economic Level Schools
- High Poverty Schools
- Low Poverty Schools



ESSA REQUIREMENT – EQUITABLE ACCESS TO EDUCATORS 60

60



61

➤ Quick Terminology

Emergency/ Provisional Credentials

"Temporary license issued by the State Board that allows the license holder to teach or work in Arkansas schools"

Title I Schools

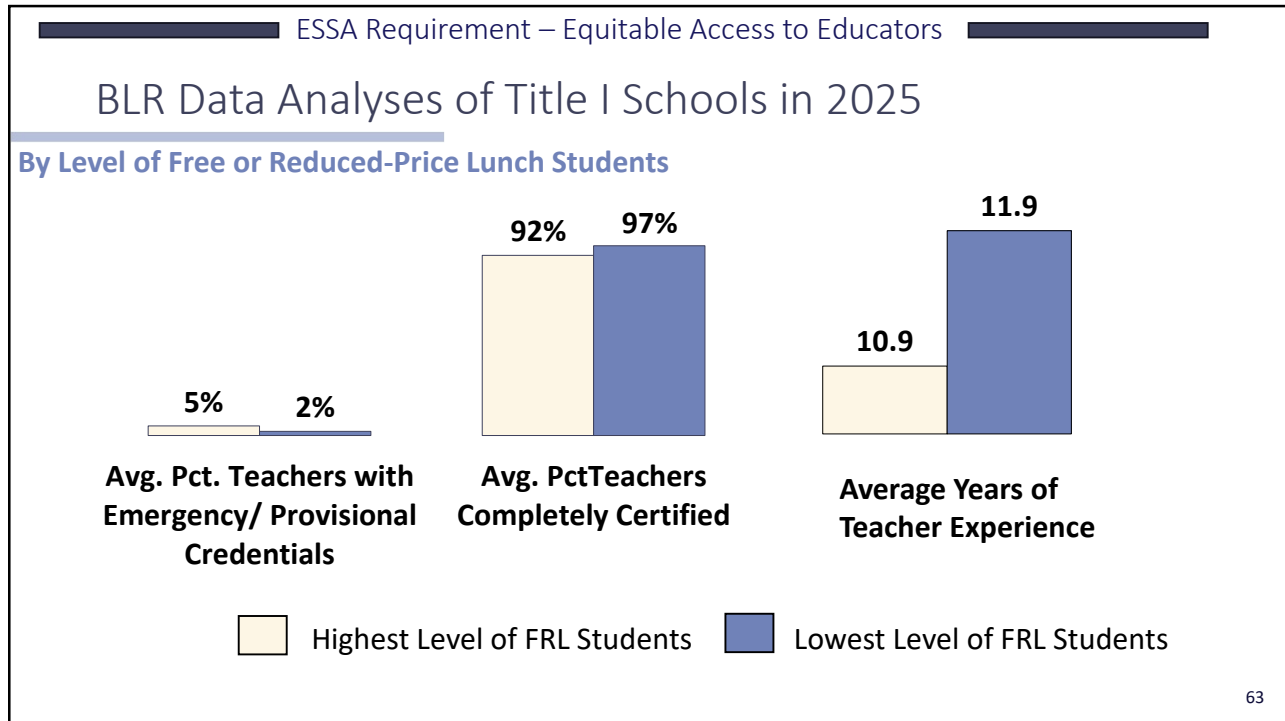
Individual public schools with poverty rates (Free or Reduced-Price Lunch Eligible Students) above 40%.

BLR Data Analyses of Title I Schools

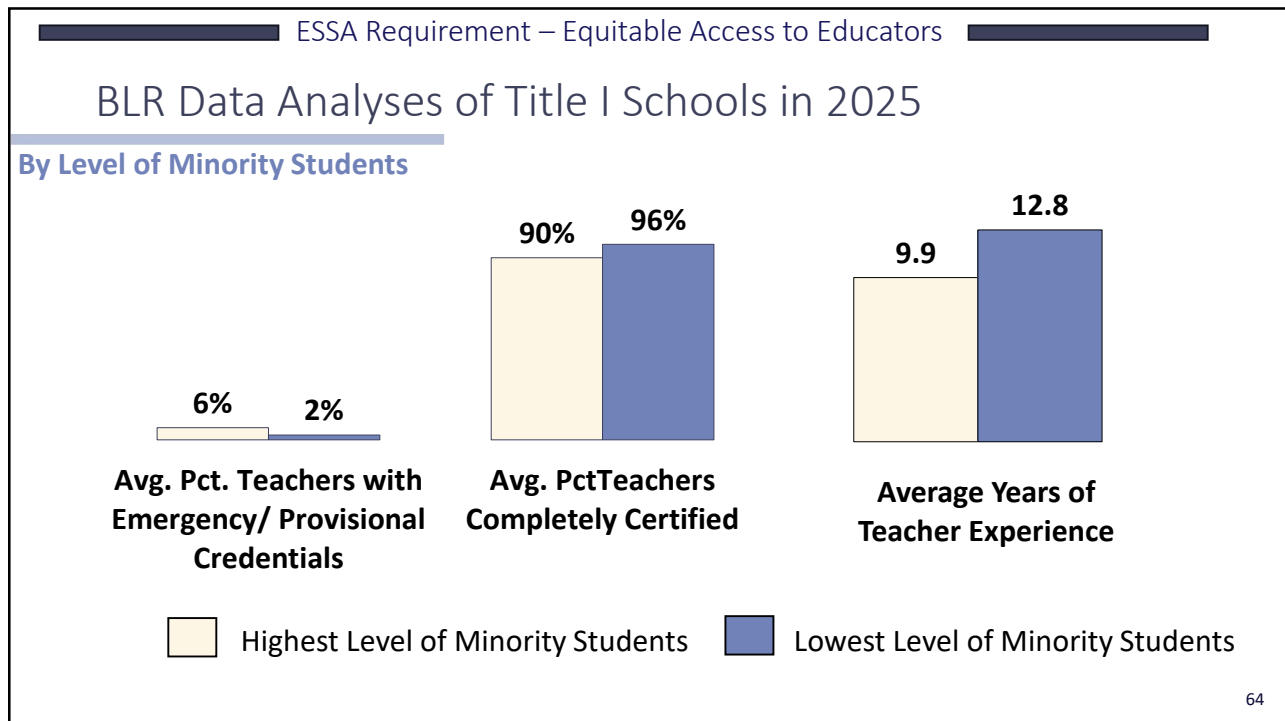
Analyses of available DESE teacher quality data

ESSA REQUIREMENT – EQUITABLE ACCESS TO EDUCATORS 62


62



63



64




Student Achievement School Support and Improvement Access to Educators State's Standing

State Standing Under ESSA

ESSA FEDERAL ACCOUNTABILITY SYSTEM 65

65



ESSA Public Reporting

Per Arkansas State ESSA Plan, Last Approved in 2022

ESSA Requirements

Must report the following on schools identified for support:

- Assessment participation rates
- Assessment results
- Graduation rates
- Progress toward goals
- Number and percentage of English language learners' achievement in English-language proficiency

Arkansas ESSA Plan

- ESSA School Index
- State Report Cards
 - Include schools' progress toward meeting long-term goals

66

66

State Standing Under ESSA

Academic Standards	}	<ul style="list-style-type: none">• State has assessments for all required subjects and four levels of achievement, but levels are based on ACT Aspire
Statewide Accountability System		<ul style="list-style-type: none">• Arkansas Educational Support and Accountability Act

67

67

State Standing Under ESSA

Academic Achievement	}	<ul style="list-style-type: none">• Looking at ATLAS scores, no student group met the ESSA plan goal of 80% in 2025
English Language Proficiency		<ul style="list-style-type: none">• Most recent checkpoint was 43% of students on track in 2024; 41% of all EL students were on track

68

68

State Standing Under ESSA

4- Year Graduation Rates	}	<ul style="list-style-type: none">• Most recent checkpoint was 90.5% in 2022; graduation rate was 88.2%
5-Year Graduation Rates		<ul style="list-style-type: none">• Most recent checkpoint was 90.2% in 2022; graduation rate was 89.9%

69

State Standing Under ESSA

School Support	}	<ul style="list-style-type: none">• Unclear how schools are being identified for support or exiting support due to ESSA School Index scores not being calculated
Public Reporting		<ul style="list-style-type: none">• ESSA School Index is not available for 2024 or 2025, DESE continues to issue report cards

70

State Standing Under ESSA

Teacher Effectiveness

- School Report Cards have not been issued for 2025
- Information on 2024 report cards did not provide separate data for Title I schools as required
- High Poverty/Minority Report was last issued in 2024 using 2023 data
- Equity Labs were scheduled to begin in 2019

71

71



Arkansas Educational Support and Accountability Act

State Accountability System

72

72

Arkansas Educational Support and Accountability Act (AESAA)

Ark. Code Ann. § 6-15-2902

The General Assembly found that “it is the state's responsibility to provide the statutory framework necessary to ensure that all students in the public schools of this state have a substantially equal opportunity to achieve and demonstrate...

- academic readiness,
- individual academic growth,
- and competencies through the application of knowledge and skills in core subjects

...consistent with state academic standards through a student-focused learning system.”

73

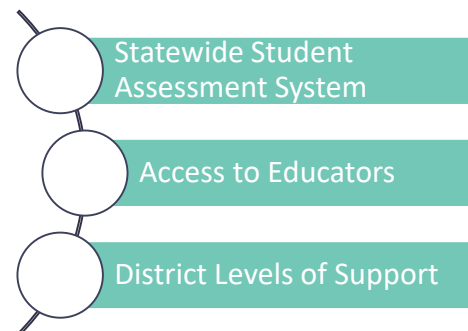
73

Arkansas Educational Support and Accountability System

“A Student-Focused Learning System”

Closely mirrors components in state’s ESSA plan:

- Academic standards
- Statewide student assessment system
- District levels of support for public school districts
- Performance indicators information systems



74

74

Assessment System Educator Access District Support

Statewide Student Assessment System

AESAA STATE ACCOUNTABILITY SYSTEM 75

75

Statewide Student Assessment System

AESAA Statutory Requirements

- DESE must implement a statewide student assessment system for public schools**
Arkansas Teaching, Learning & Assessment System (ATLAS) – implemented in 2023-24 school year
- All students enrolled in public school must take the statewide assessment**
Alternative assessment available for students with disabilities

76

76

STATEWIDE STUDENT ASSESSMENT SYSTEM

AESAA Statutory Requirements

Developmentally appropriate measurements or assessments for kindergarten through grade two (K-2) in literacy and mathematics

High-quality, evidence-based literacy screeners for kindergarten through grade three (K-3)

Arkansas Assessments / Screeners

- ATLAS:K-2 Interim and Summative Assessments (Literacy and Math)
- K-3 Screeners (Math and Literacy)

At the time this report was written, the 2024 and 2025 K-2 interim and summative assessments, and K-3 screener results have not been released.

77

77

STATEWIDE STUDENT ASSESSMENT SYSTEM

AESAA Statutory Requirements

Assessments to measure English language arts (ELA), mathematics, and science as identified by the state board

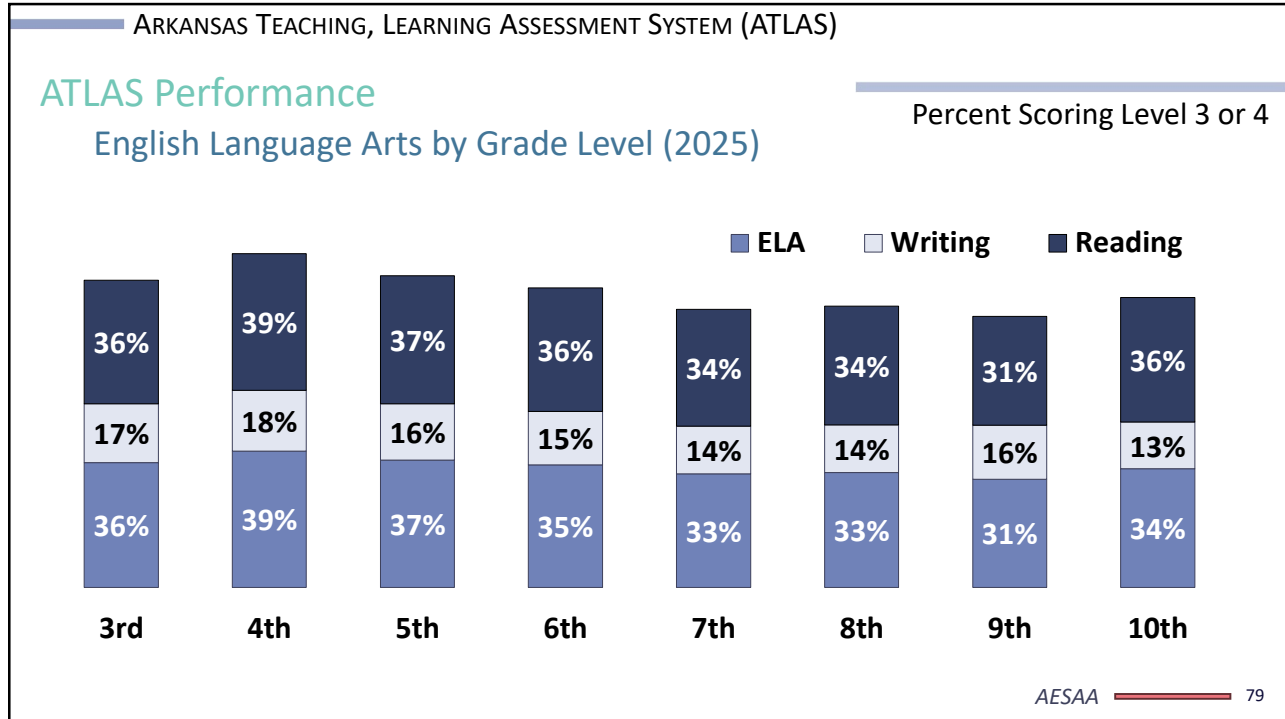
Arkansas Assessments / Screeners

- ATLAS Summative/End of Course Assessments
 - 3-8th grades (English language arts, mathematics, science)
 - 9-Grade 10s (ELA, Algebra I, Geometry, and Biology)
- Dynamic Learning Maps
 - 3-Grade 10s (ELA and math)
 - 3-8th grades and Grade 10 (science)

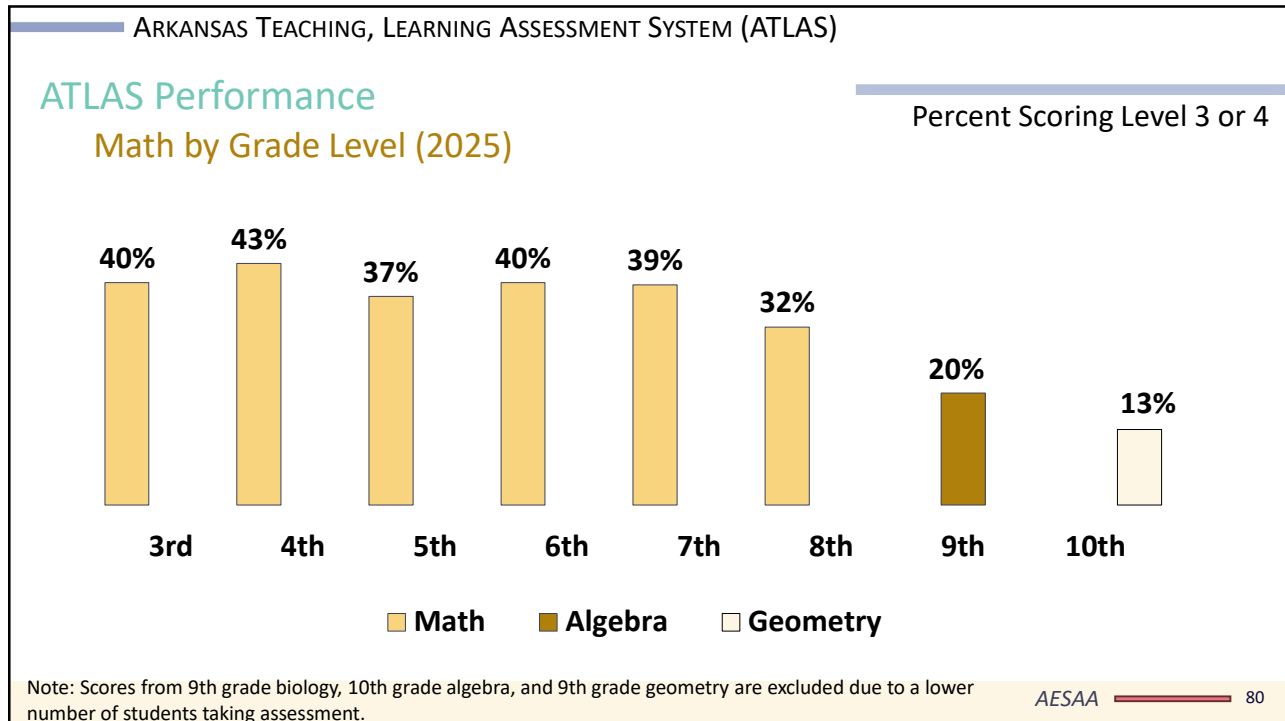
Working Definition of “educational adequacy”
“to have all, or all but the most severely disabled, students perform at or above proficiency on these tests”

78

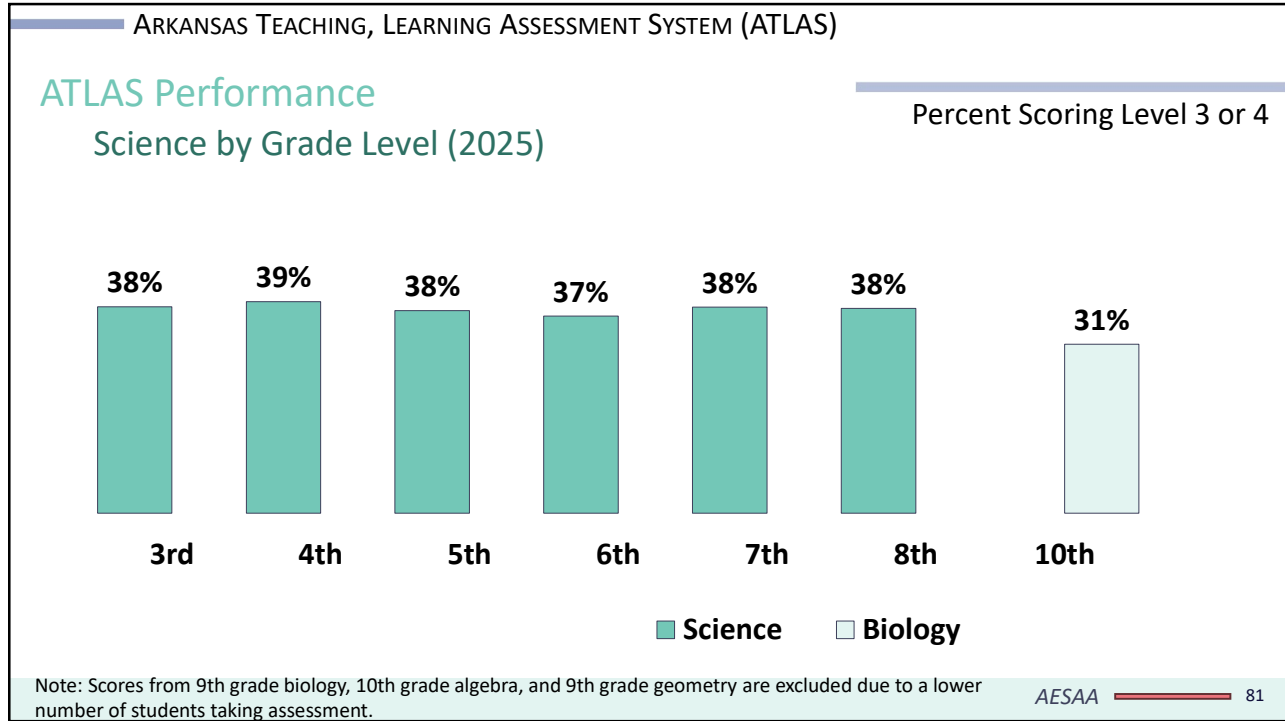
78



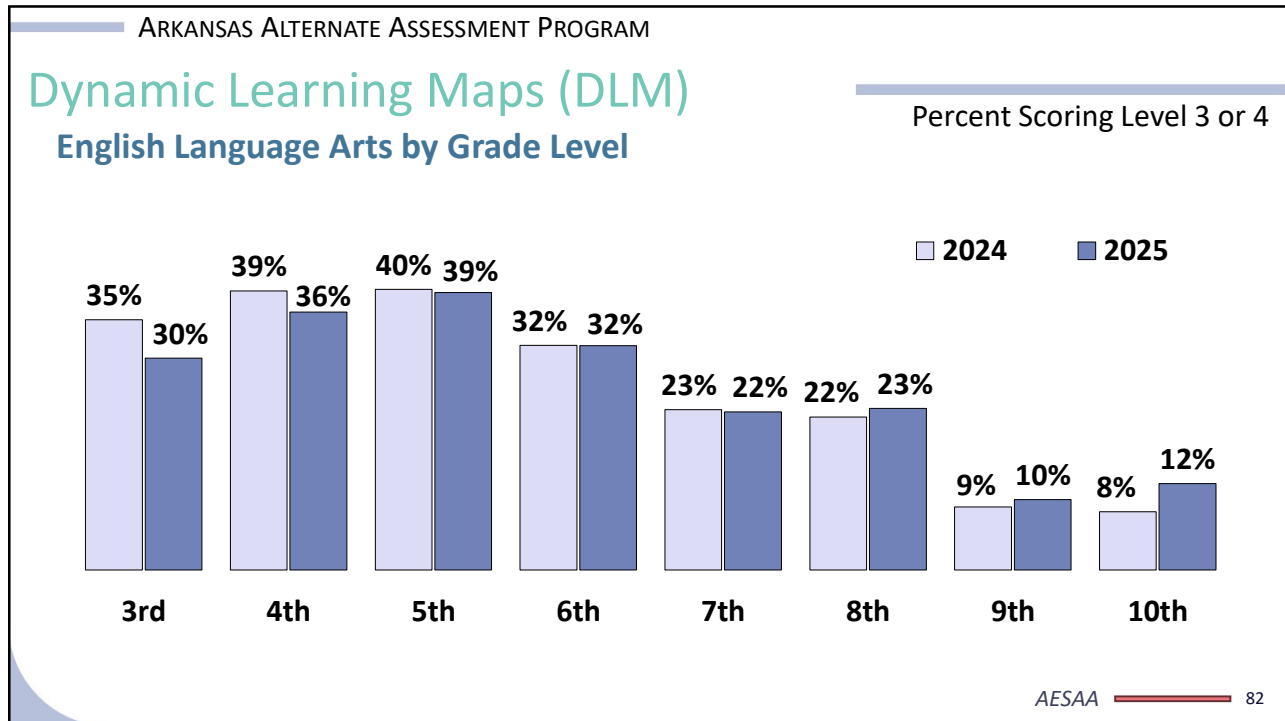
79



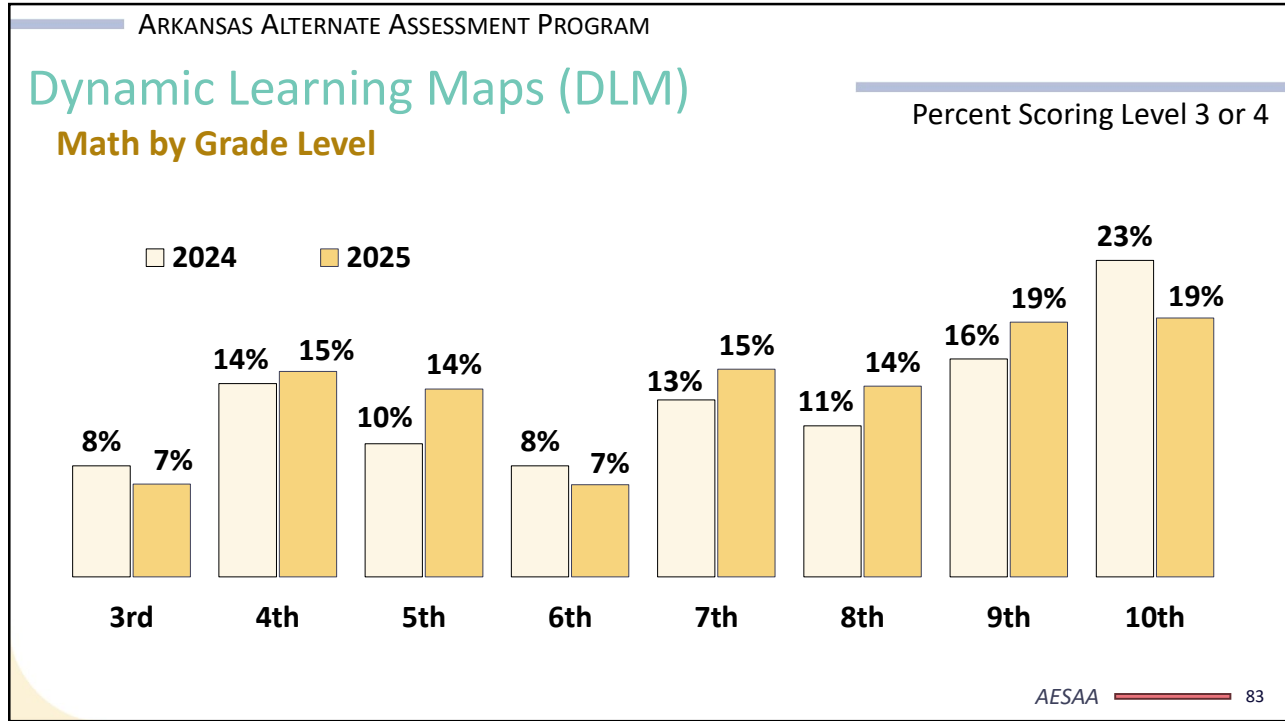
80



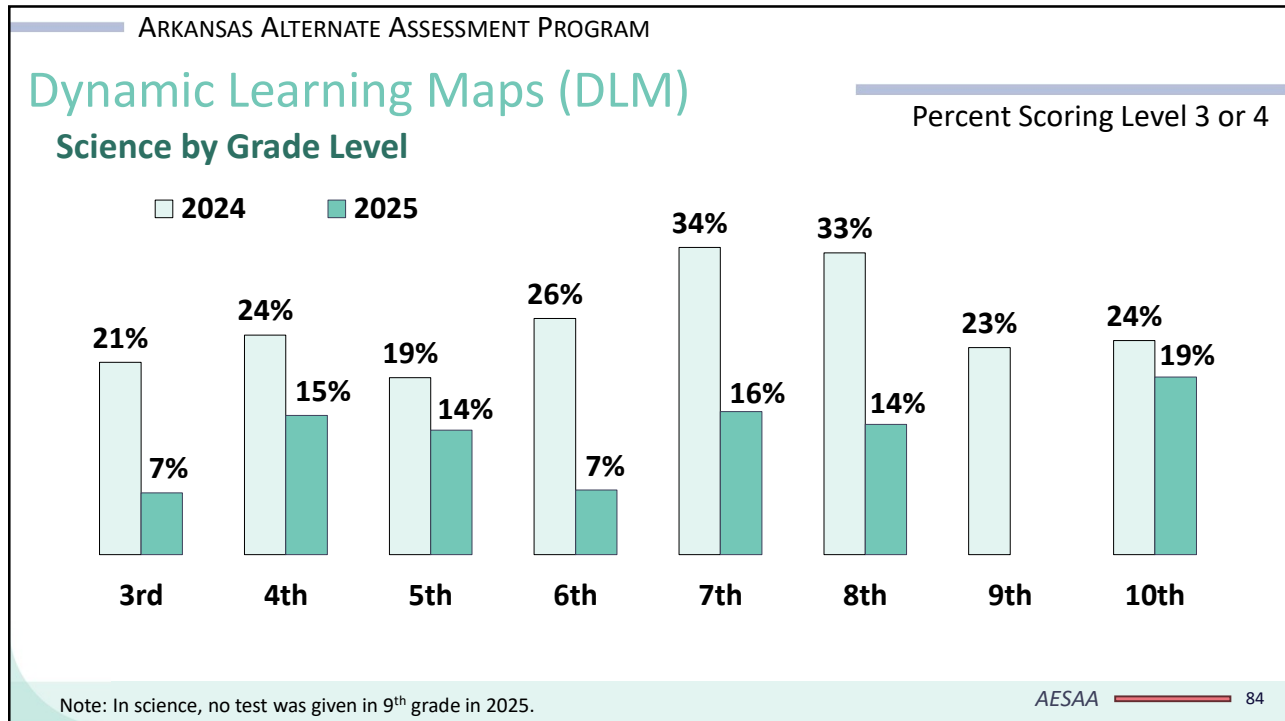
81



82



83



84

STATEWIDE STUDENT ASSESSMENT SYSTEM

AESAA Statutory Requirements

Assessments of English proficiency of all English learners

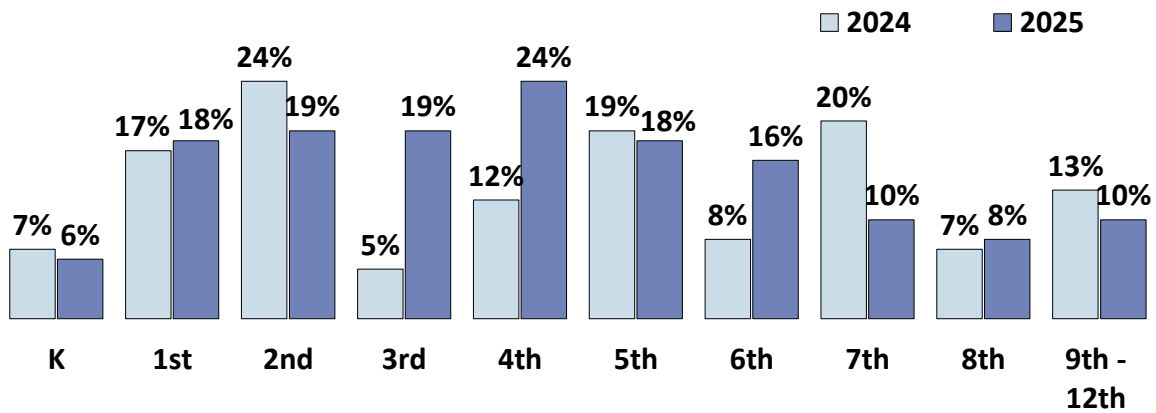
Arkansas Assessments / Screeners

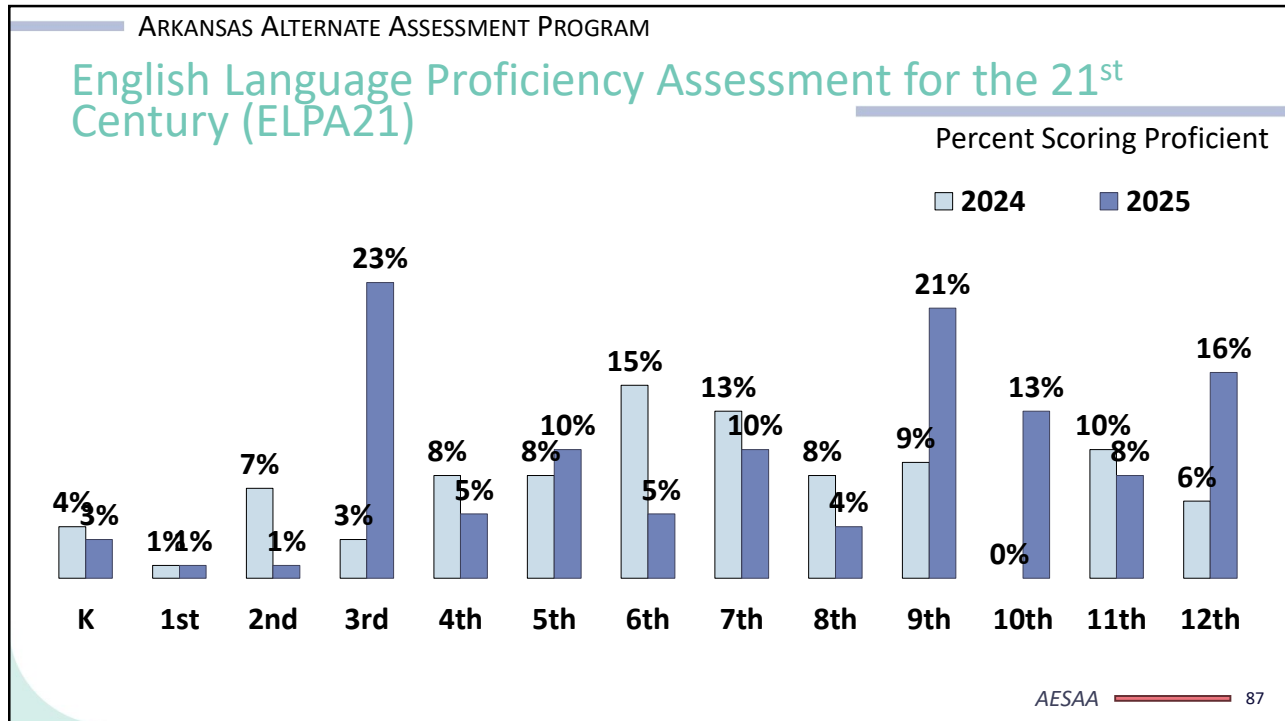
- English Language Proficiency Assessment for the 21st Century (ELPA21)
- Alt ELPA

ARKANSAS ALTERNATE ASSESSMENT PROGRAM

English Language Proficiency Assessment for the 21st Century (ELPA21)

Percent Scoring Proficient





87

STATEWIDE STUDENT ASSESSMENT SYSTEM

AESAA Statutory Requirements

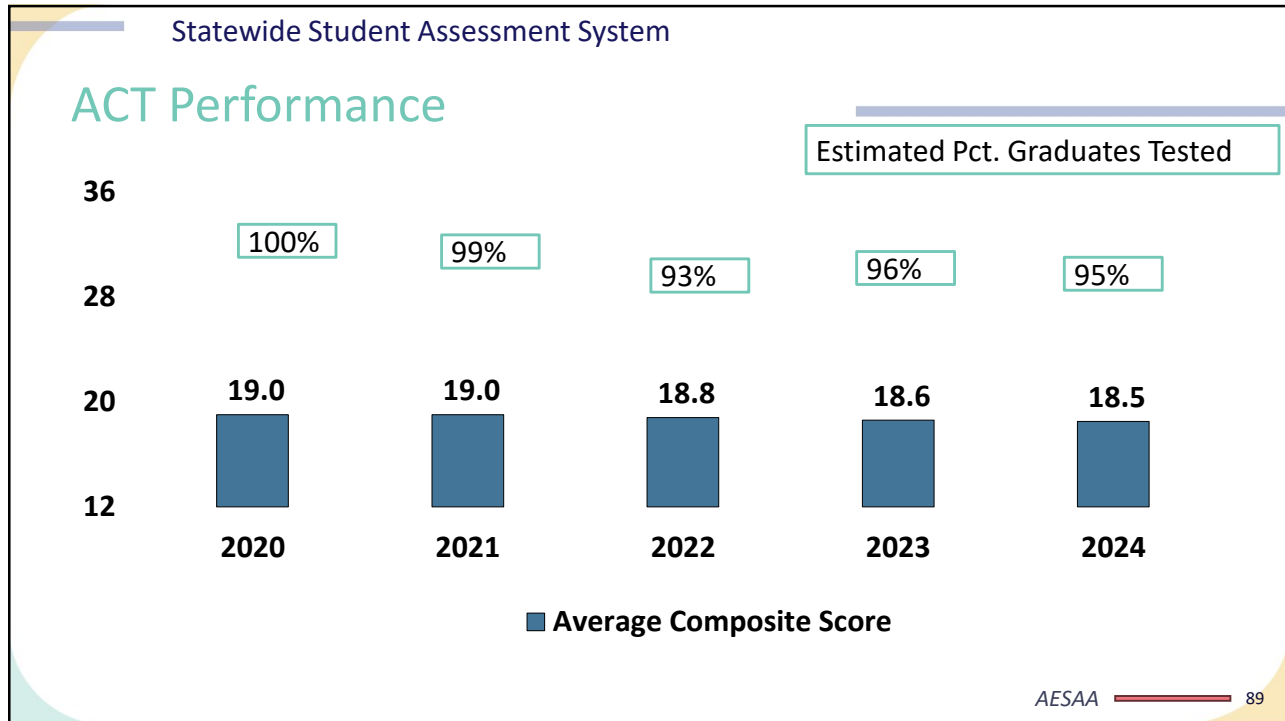
- Assessments to measure college and career readiness in grades 10-12
- May include additional assessment options approved by the SBOE (Civics, Government, Additional Sciences)

Arkansas Assessments / Screeners

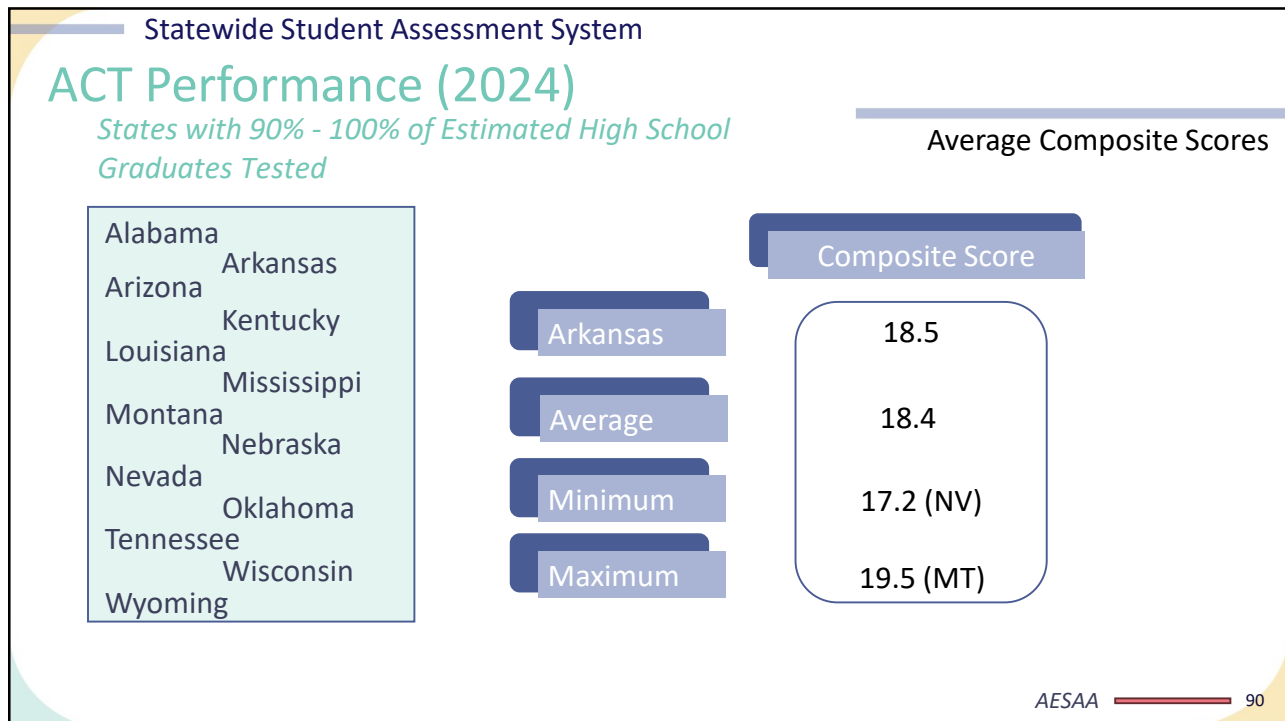
- ACT
- WorkKeys
- PSAT/NMSQT
- Arkansas Civics

AESAA 88

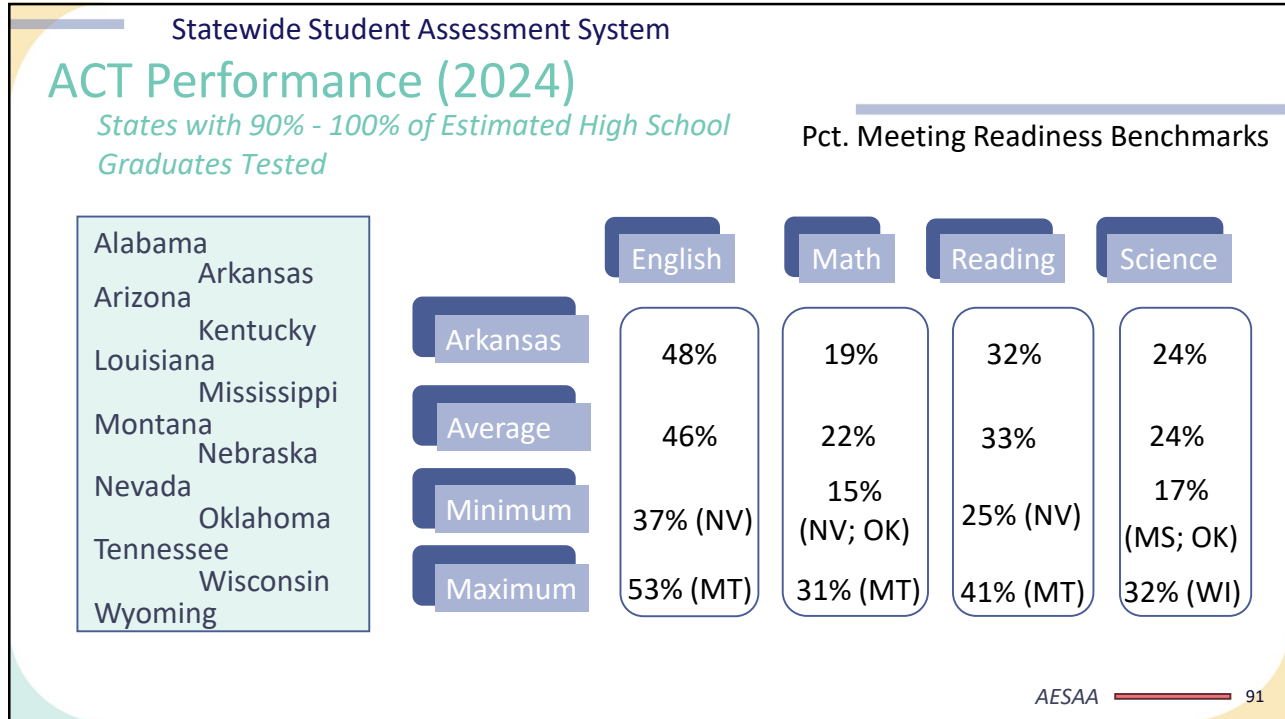
88



89



90



91

STATEWIDE STUDENT ASSESSMENT SYSTEM

AESAA Statutory Requirements

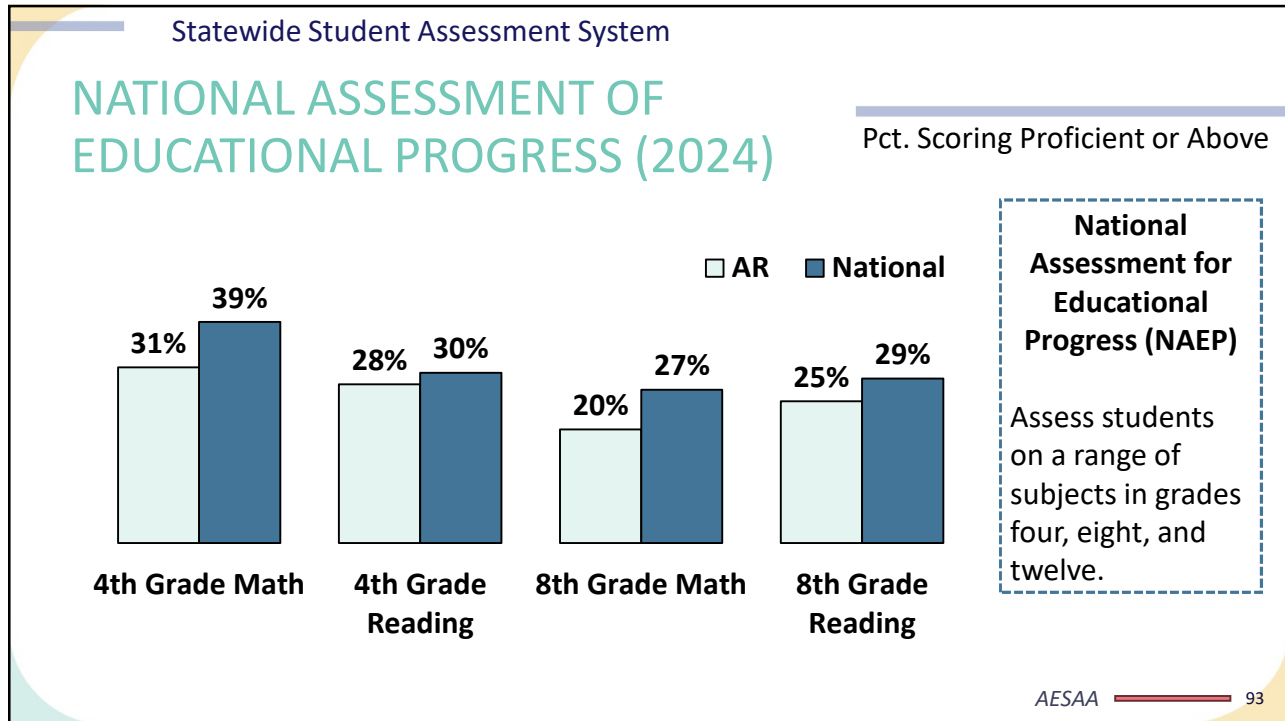
Participation in the administration of the National Assessment of Educational Progress examinations

Arkansas Assessments / Screeners

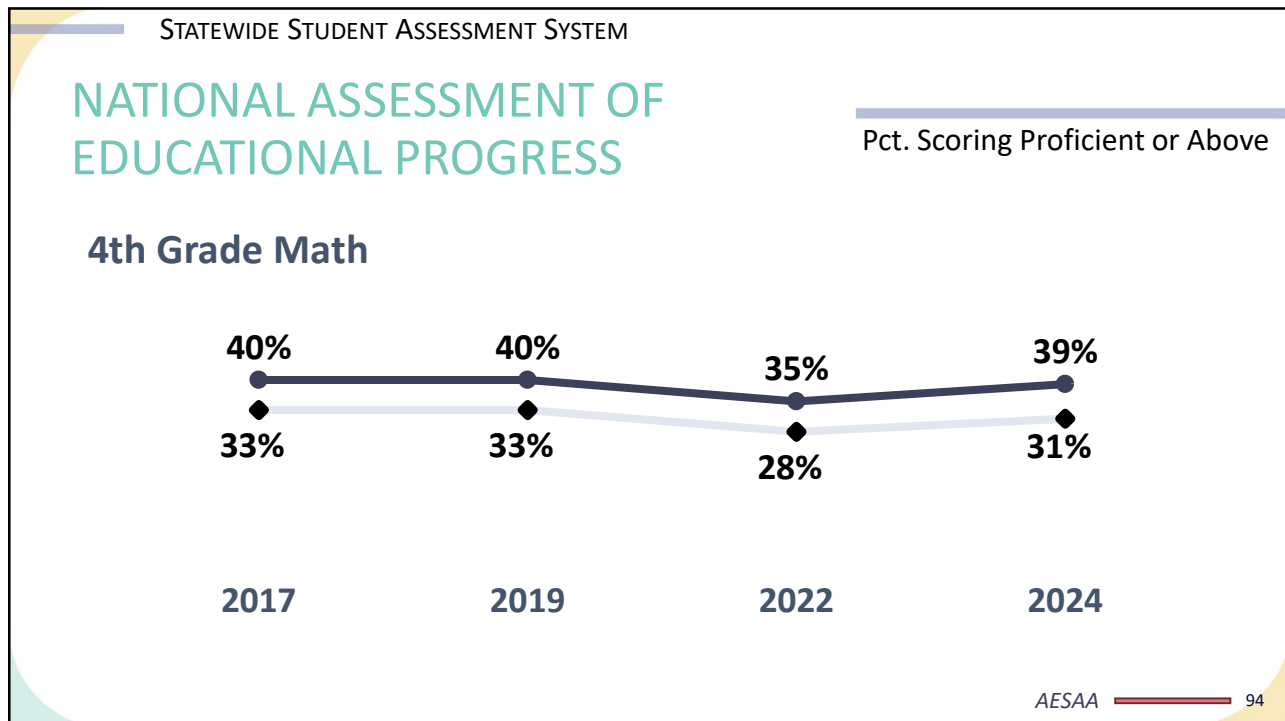
- National Assessment of Educational Progress (NAEP)

AESAA ————— 92

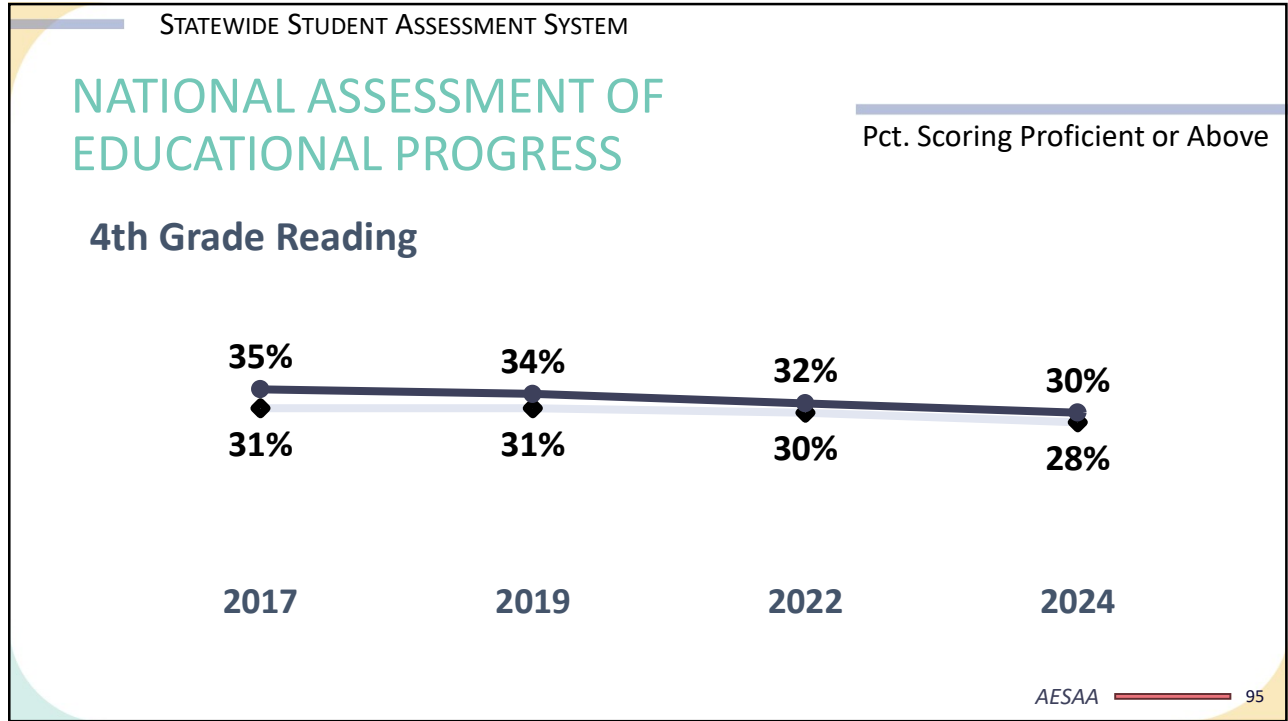
92



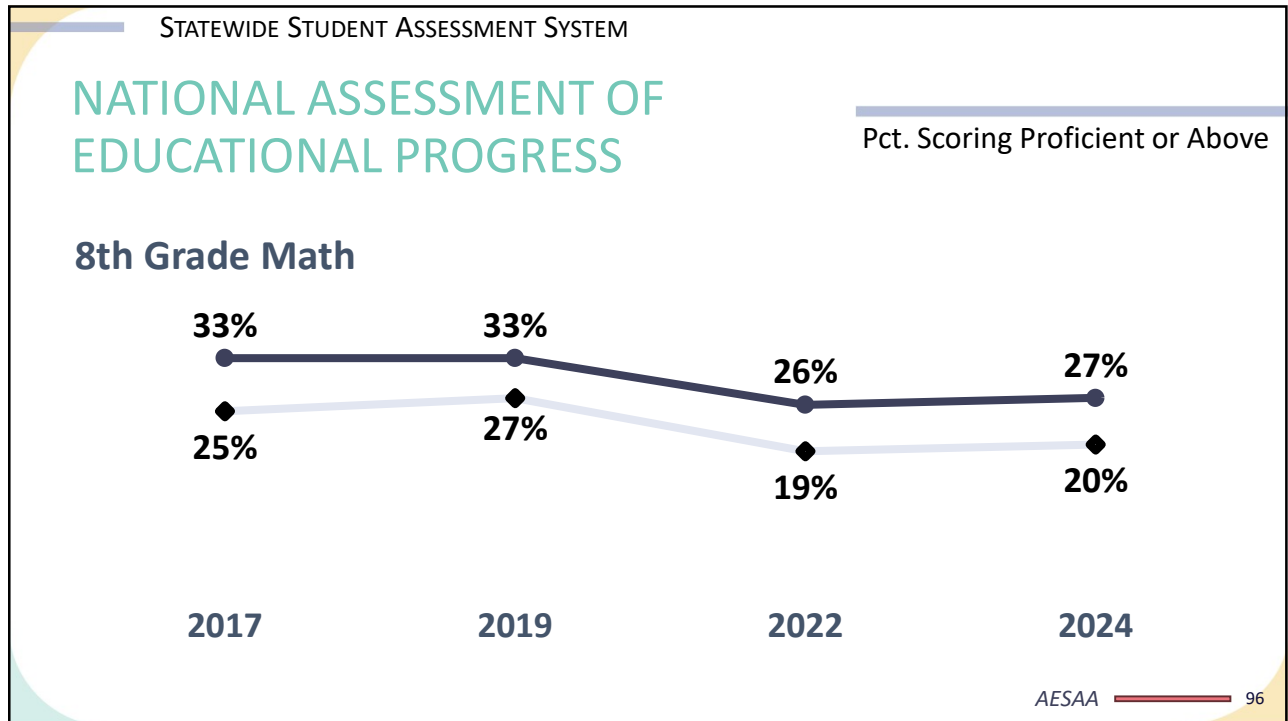
93



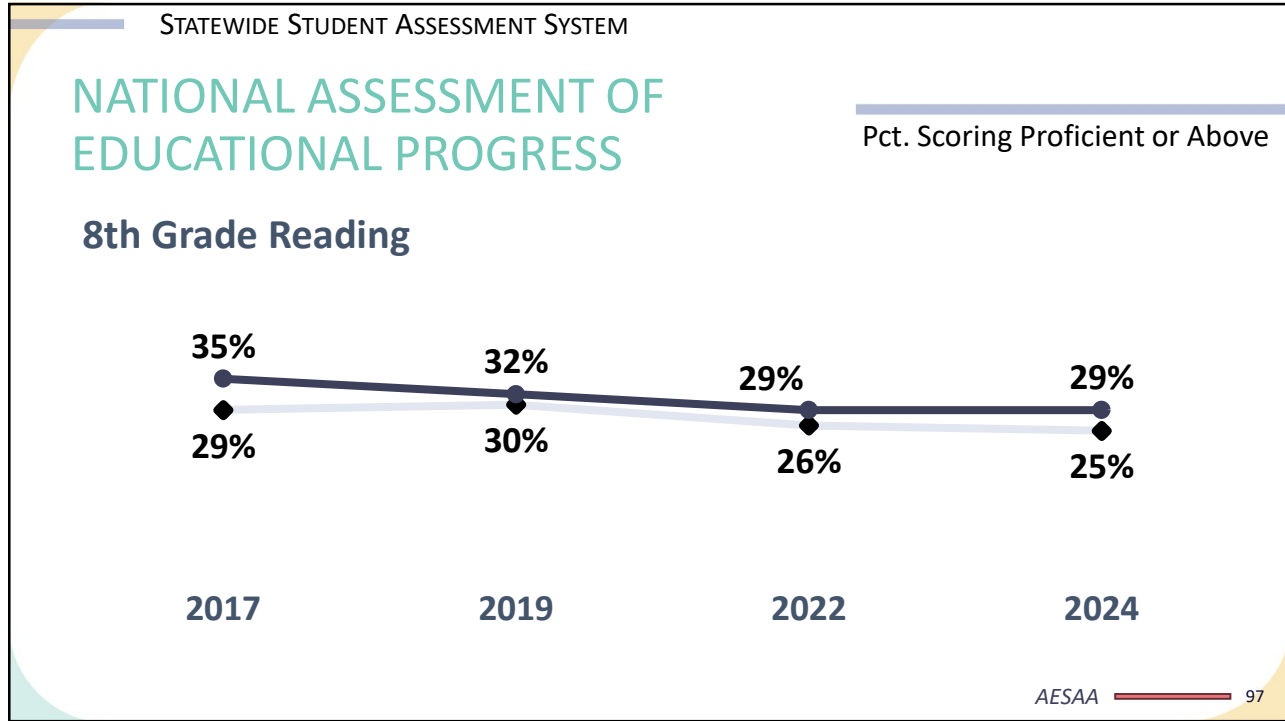
94



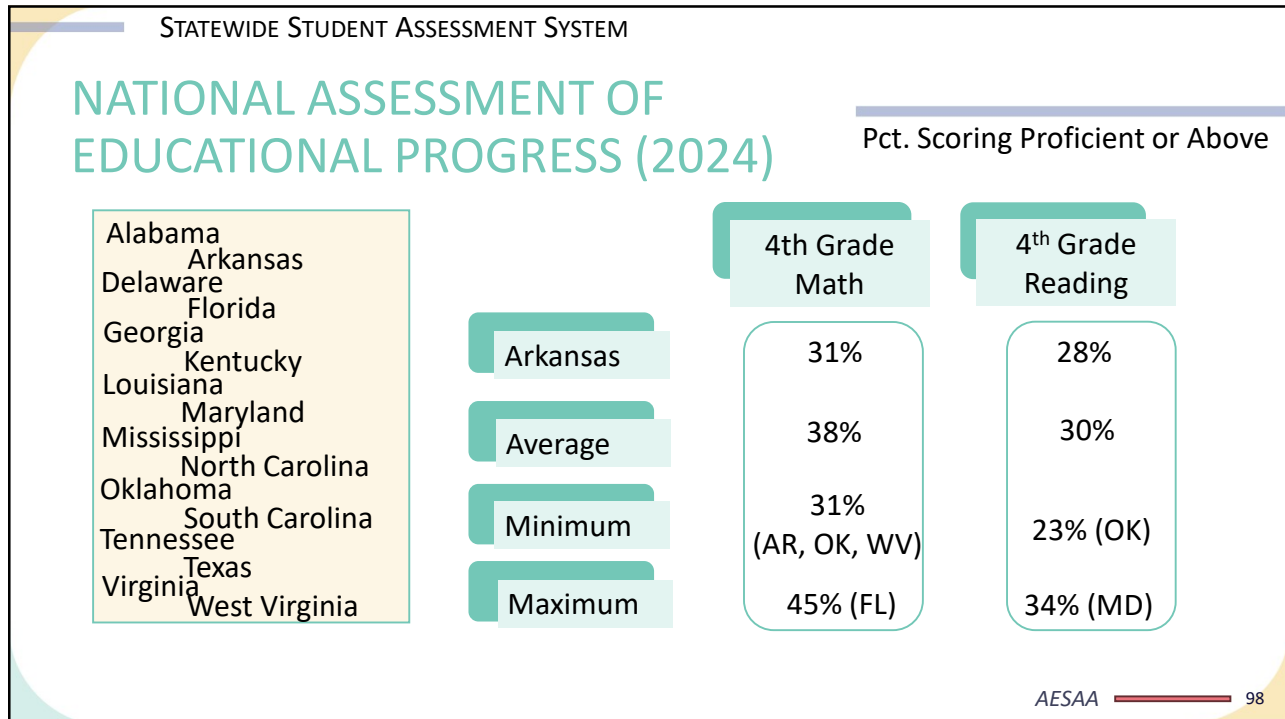
95



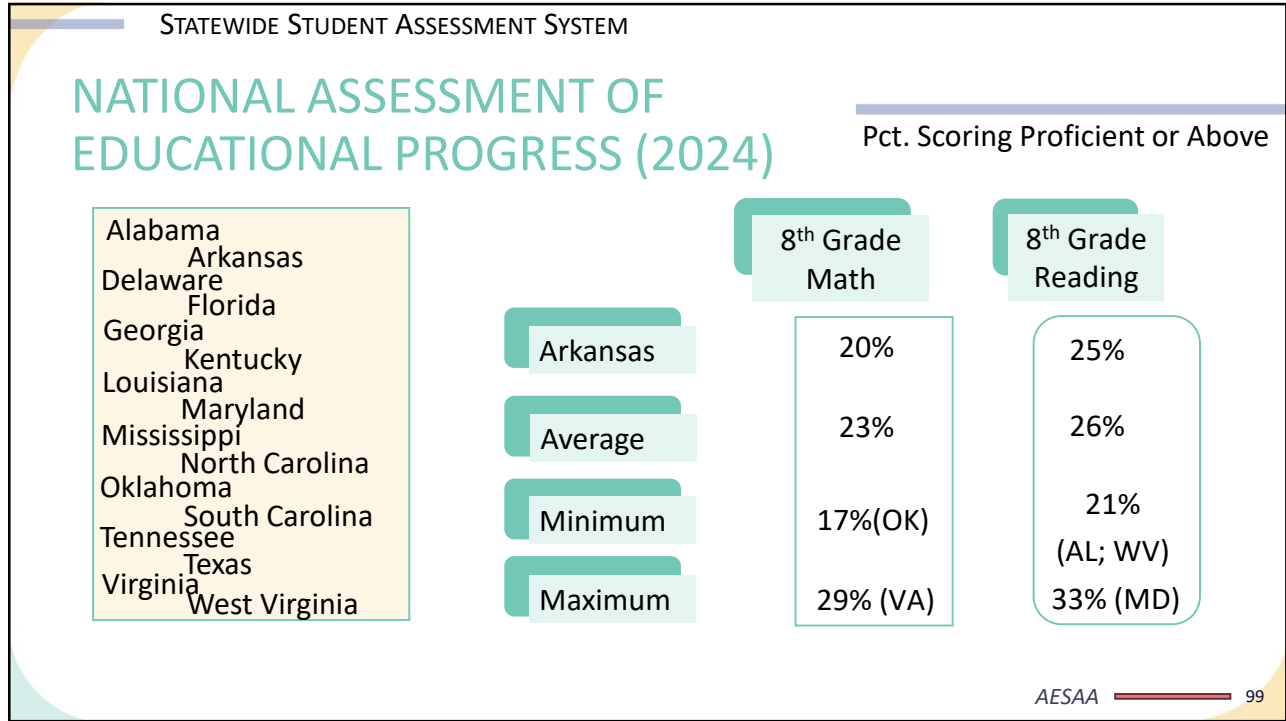
96



97



98



99

Assessment System

Educator Access

District Support

Access to Educators

AESAA STATE ACCOUNTABILITY SYSTEM 100

100



Access to Educators

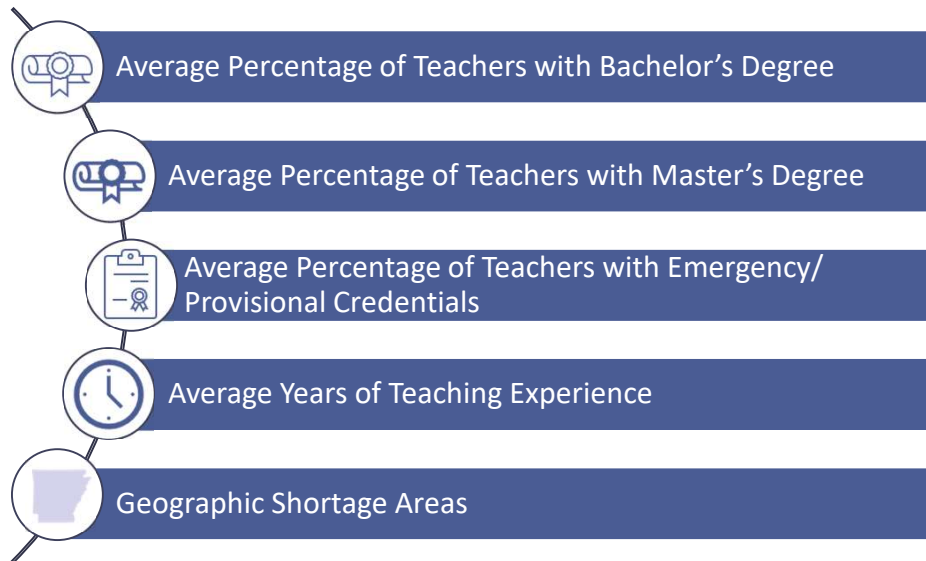
“It is the intent of the General Assembly that all students in Arkansas public schools be taught by qualified and effective educators and that low-income or minority students not be taught at disproportionate rates by educators who are ineffective, inexperienced, or teaching a subject for which they are not currently licensed.”

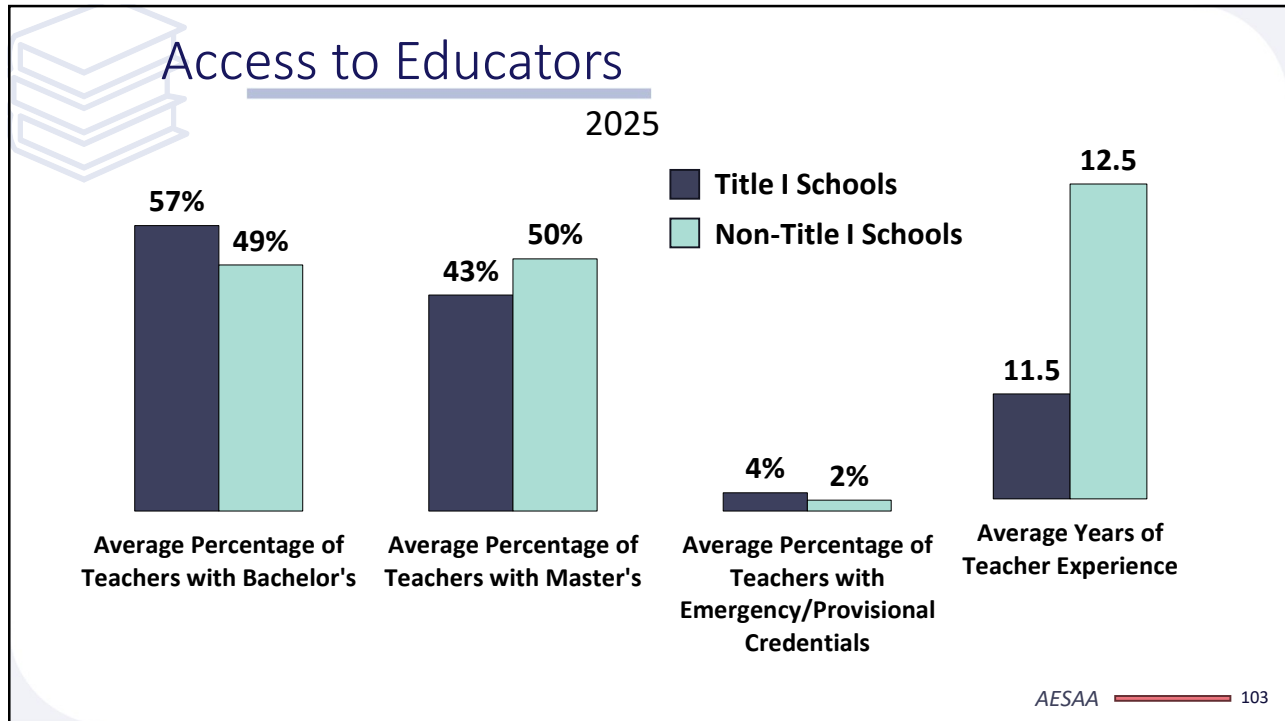


Additionally, § 6-15-2904 requires DESE to “assess whether all students have access to excellent educators” as part of the comprehensive accountability system for Arkansas public schools and districts

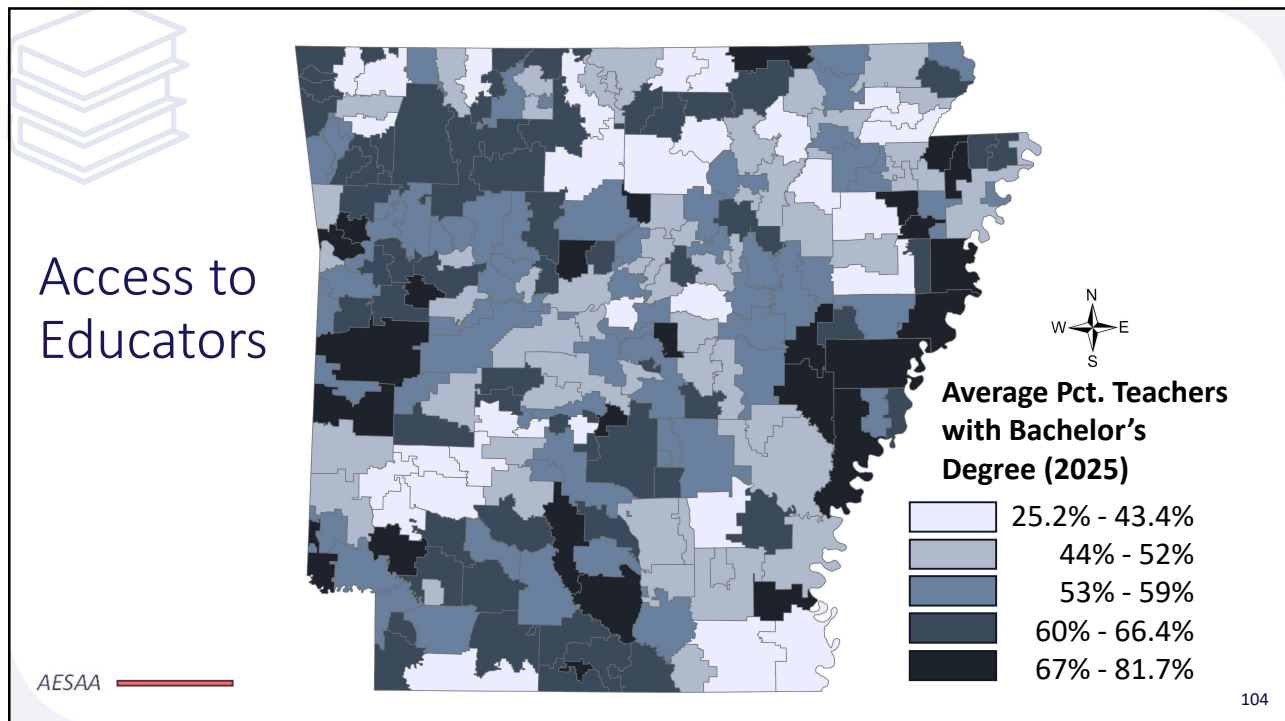


Access to Educators

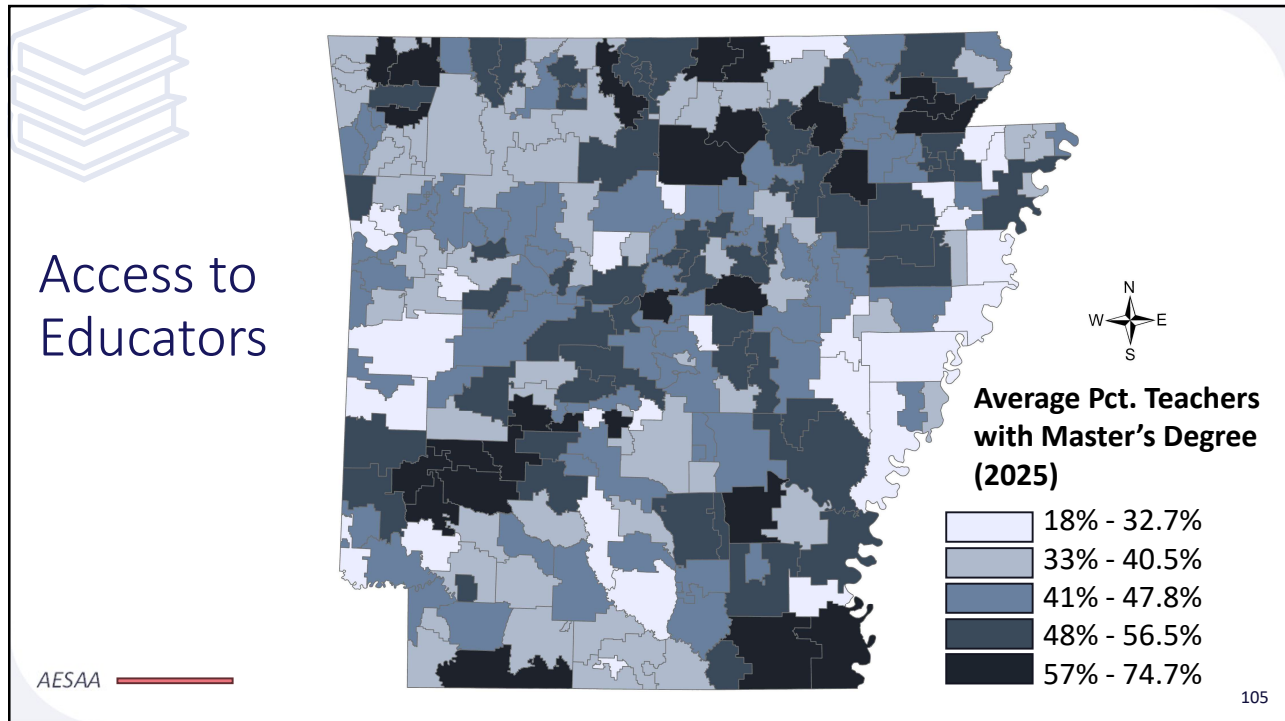




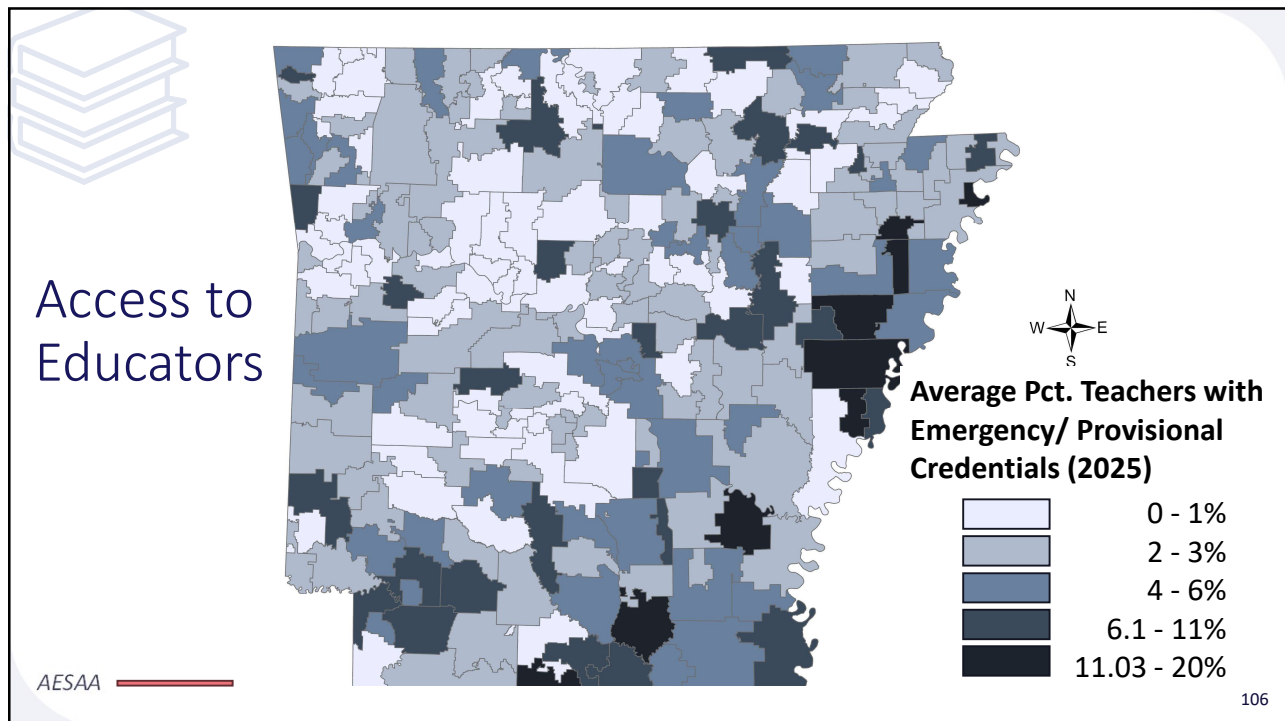
103



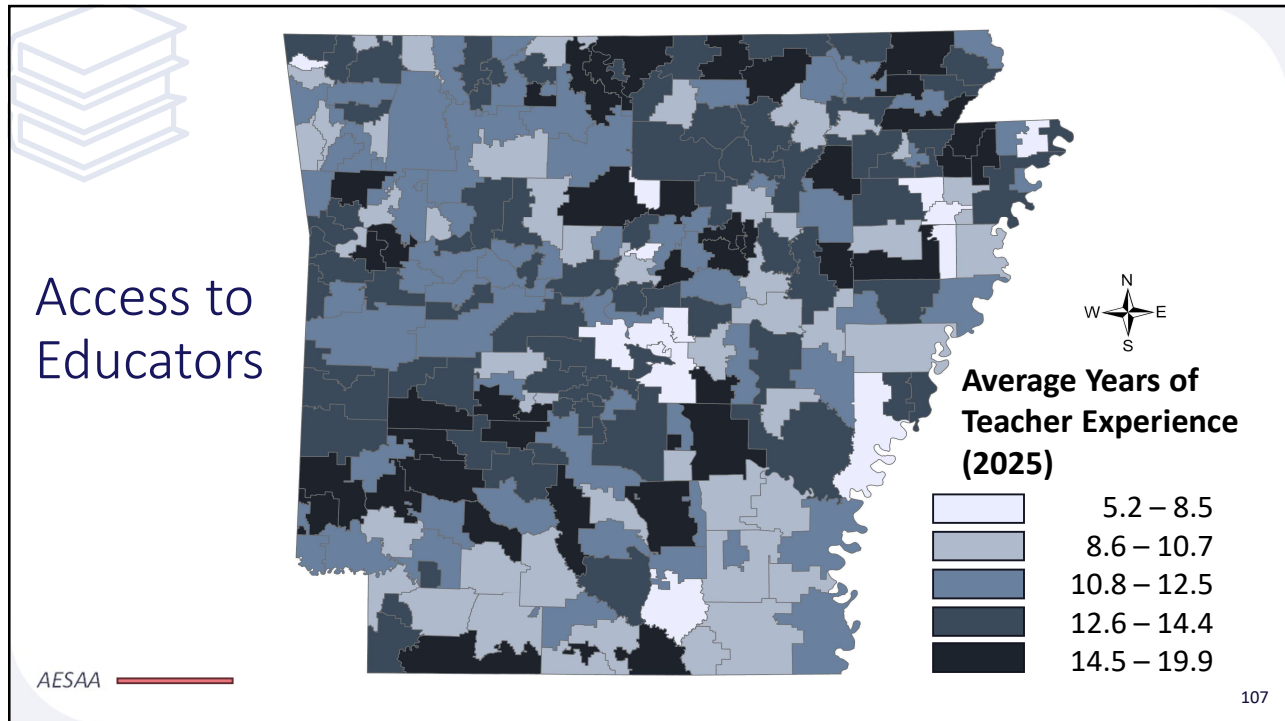
104



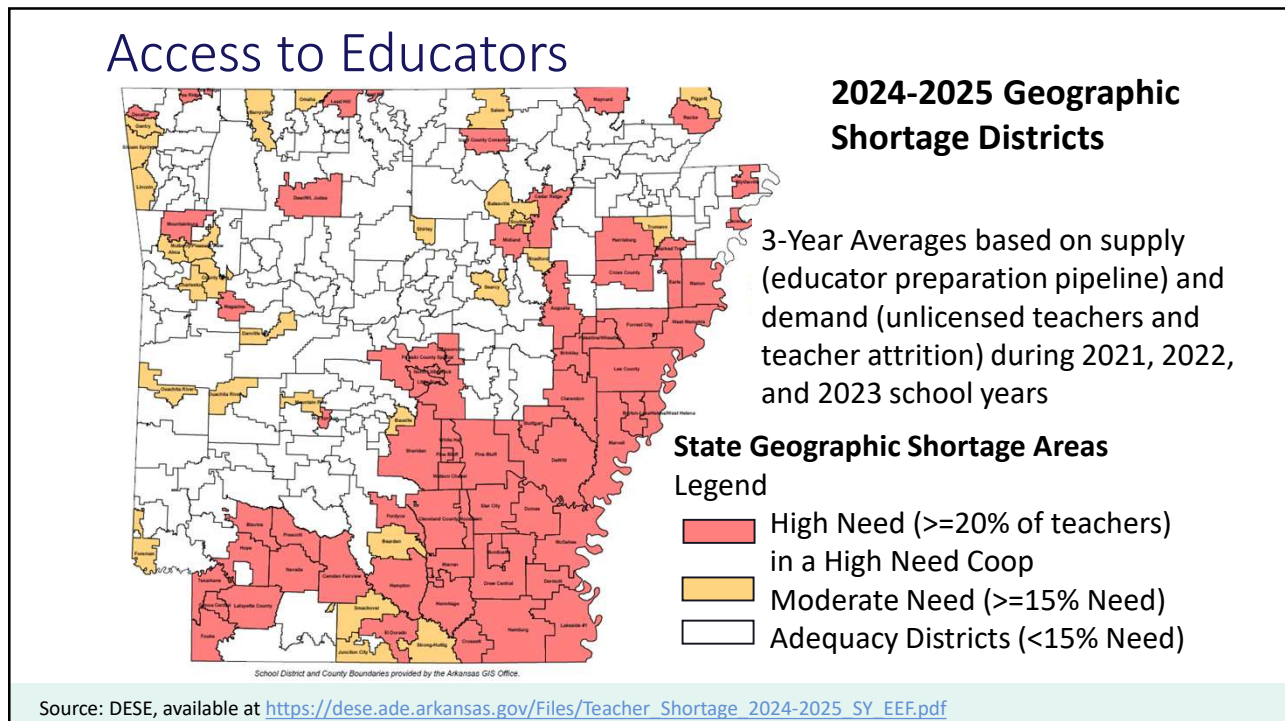
105



106



107



108

Assessment System **Educator Access** **District Support**

Levels of Support for Public School Districts

AESAA STATE ACCOUNTABILITY SYSTEM 109

109

DESE Provided Support

Level	Support Description	Classification Criteria
1	General	
2	Collaborative	
3	Coordinated Technical assistance and monitoring	40% or more of district's students scored "in need of support" on prior year summative assessment for reading
4	Directed Direct guidance on the development and implementation of school-level plans; Resource allocation; Monitoring; Evaluation	50% or more of district's students scored "in need of support" on prior year summative assessment for reading
5	Intensive DESE creates district improvement/exit plan in collaboration with district	State Board of Education (SBOE) Approval

110

110

Levels of Support – Level 5

The SBOE and Commissioner may take actions in the district, including assuming authority of the district and removing the superintendent and school board

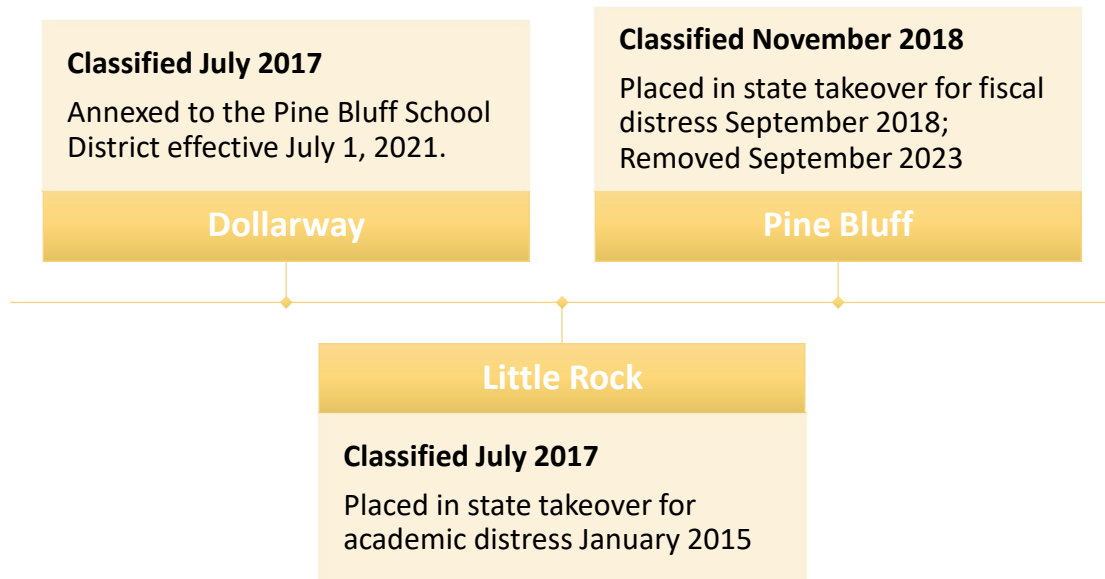
Currently, five districts are in Level 5

	Level 5 Classification Date	State Authority
Blytheville	May 29, 2025	May 29, 2025
Earle	May 9, 2019	November 6, 2017
Helena-West Helena	July 14, 2022	July 14, 2022
Lee County	May 13, 2021	March 25, 2019 May 13, 2021
Marvell-Elaine	November 28, 2022	July 7, 2023

111

111

Level of Support - Level 5



112

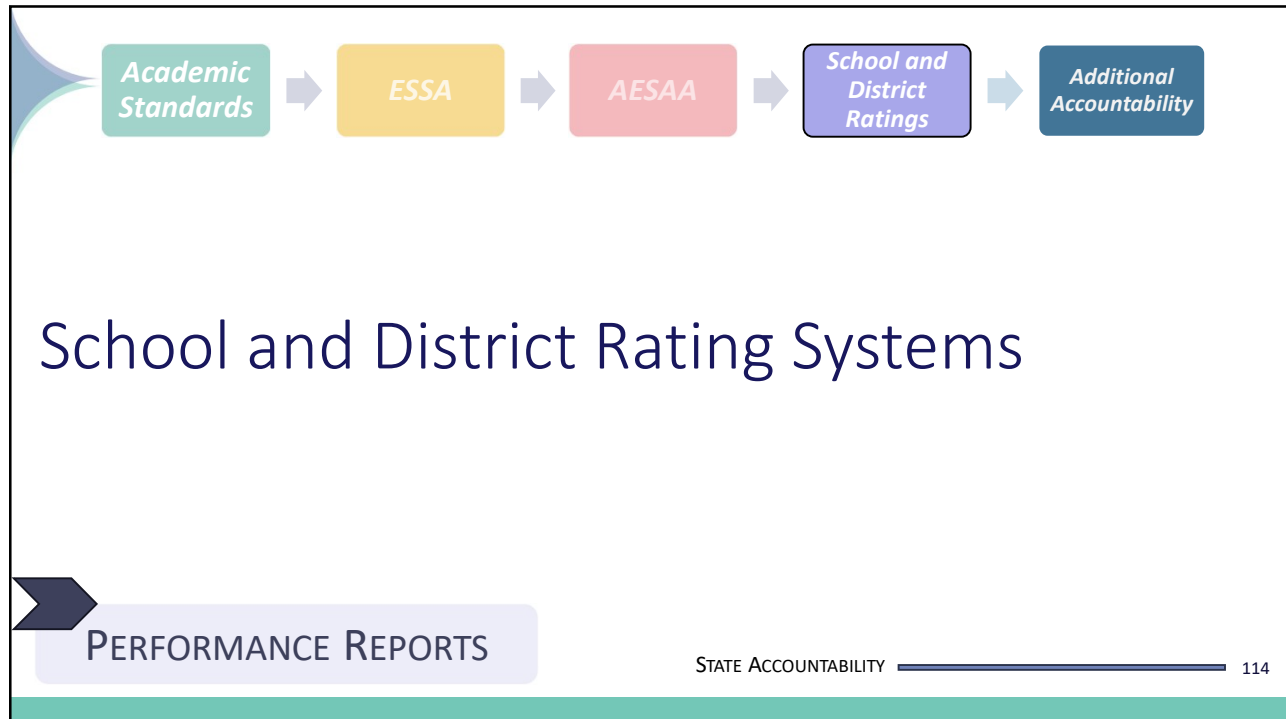
112

Levels of Support – Level 5

	Percent Level 3 or 4		
	ELA	Math	Science
All Districts	35%	39%	38%
Blytheville SD	11%	8%	9%
Earle	7%	9%	10%
Helena-West Helena SD	15%	13%	11%
Marvell-Elaine Sd	12%	13%	11%
Lee County	18%	14%	8%

113

113




114



School Ratings

STATE ACCOUNTABILITY RATING SYSTEMS 115

115



School Rating Systems – Performance Category Levels

DESE began using a new system to calculate letter grades for the 2025 school year, as required by Act 474 of 2025.

Indicator	Elementary and Middle School (K-8)	High School (9-12)
	<i>Measure Description</i>	<i>Measure Description</i>
Achievement	% Proficient English Language Arts	% Proficient English Language Arts
	% Proficient Math	% Proficient Math
	% Proficient Science	% Proficient Science
Growth of All Students	% Met Growth Target English Language Arts and ELP	% Met Growth Target English Language Arts and ELP
	% Met Growth Target Math	% Met Growth Target Math
	% Met Growth Target Science	% Met Growth Target Science
Growth of Lowest Quarter	% Met Growth Target English Language Arts and ELP	% Met Growth Target – Average of English Language Arts, Math, and Science
	% Met Growth Target Math	
	% Met Growth Target Science	
Success Ready Graduate	Not included in K-8 Formula	% Graduating in four-year cohort
		% Graduates with merit or distinction
		A transitional readiness measure will be used until Success Ready Pathways are fully implemented

116

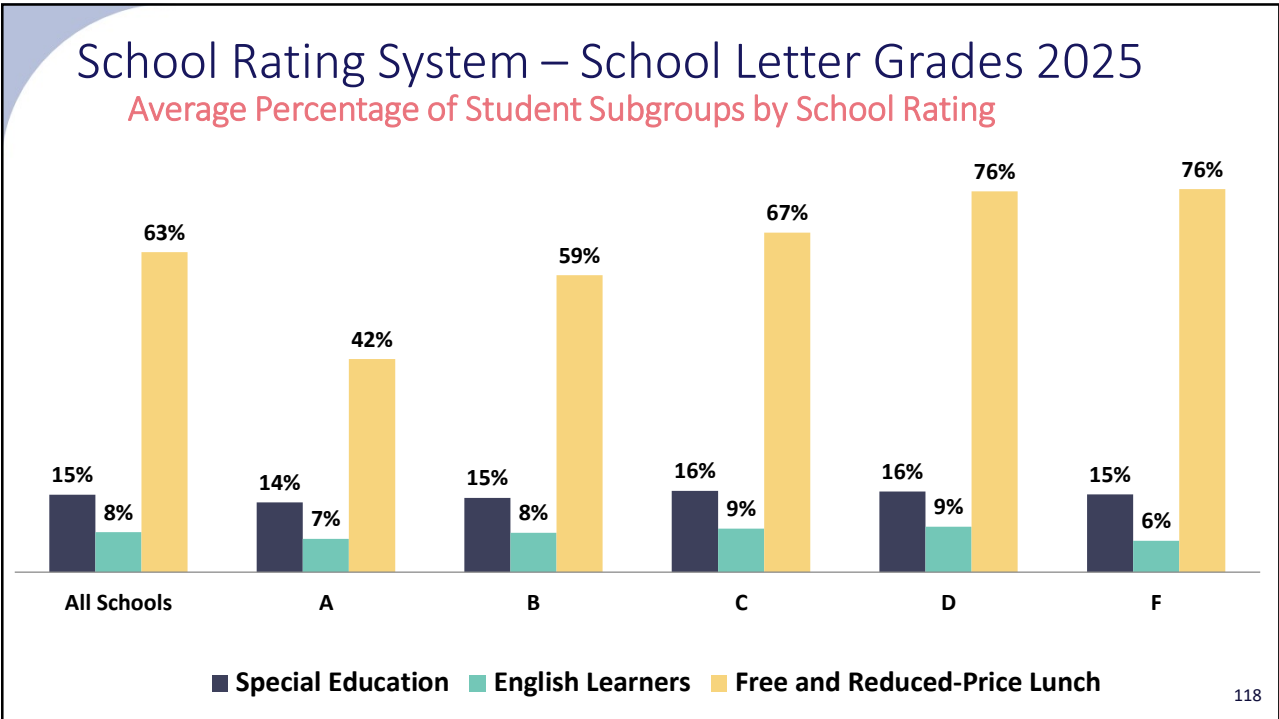
116

School Rating Systems -School Letter Grades 2025

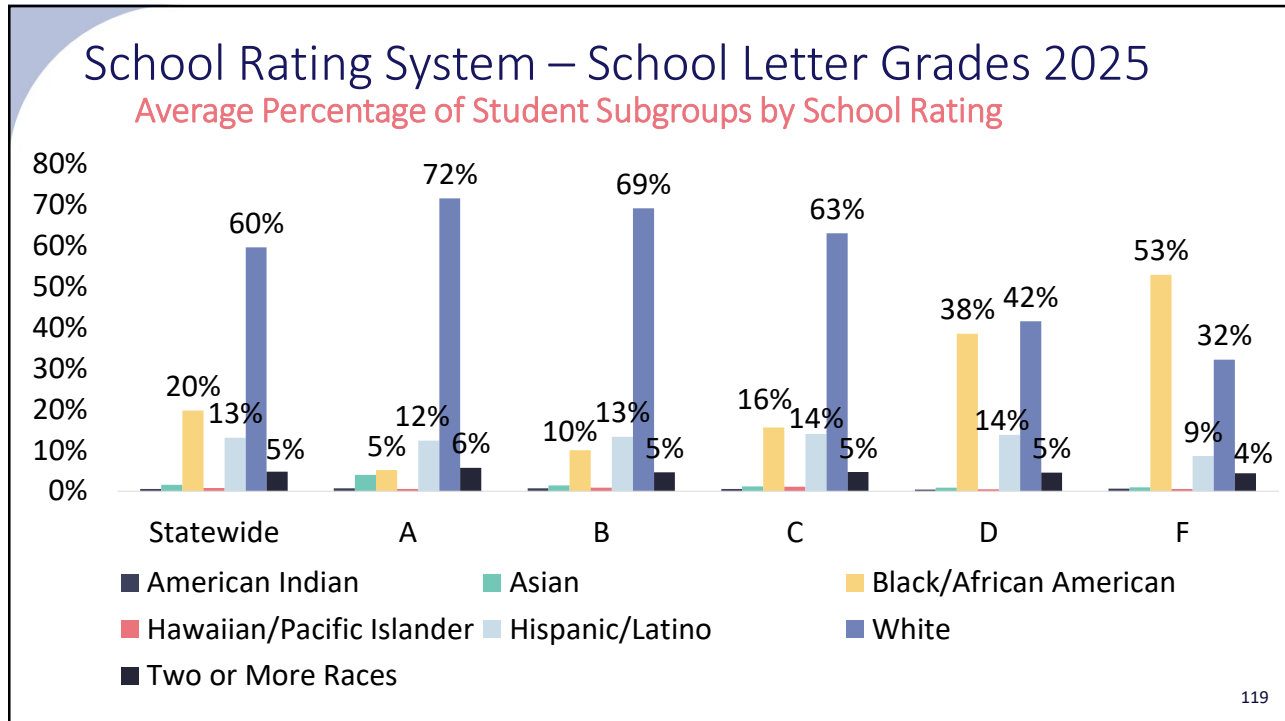
Letter Grade	Number of Schools	% Total Schools	Total Students
A	133	13%	68,655
B	308	29%	144,666
C	345	33%	152,736
D	137	13%	59,144
F	108	10%	42,112
Exempt/No Grade	18	2%	2,474

117

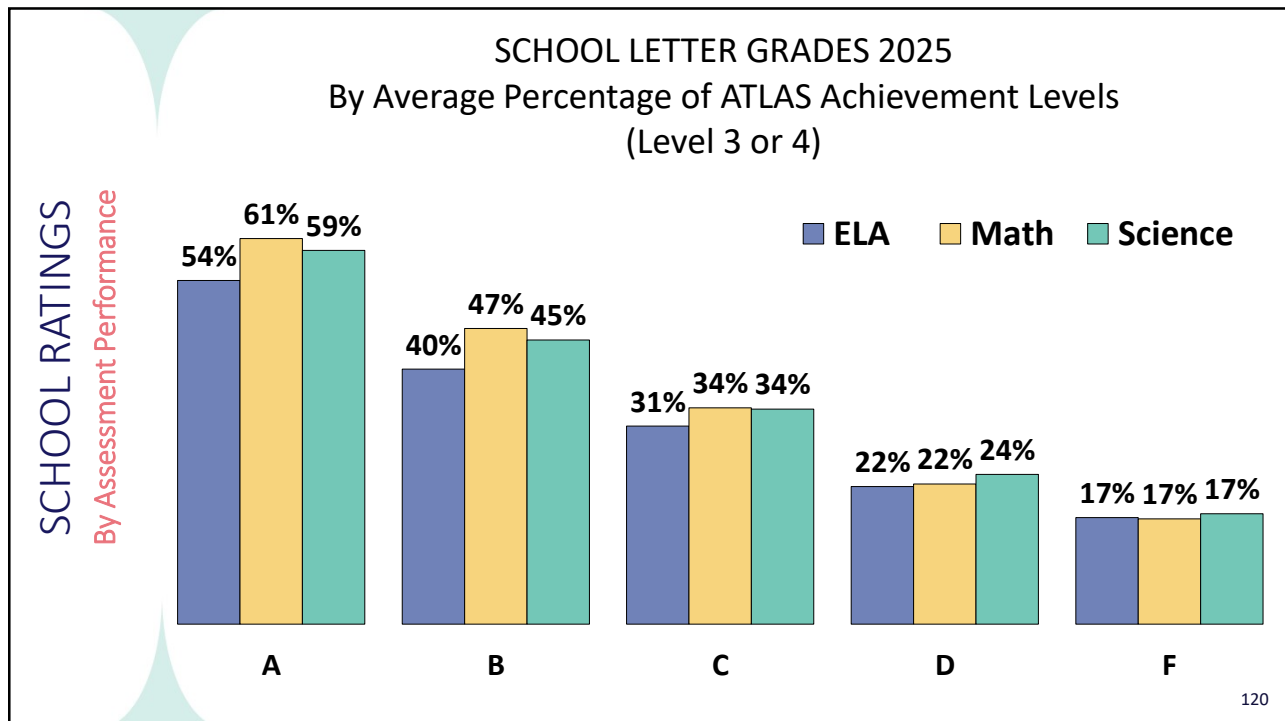
117



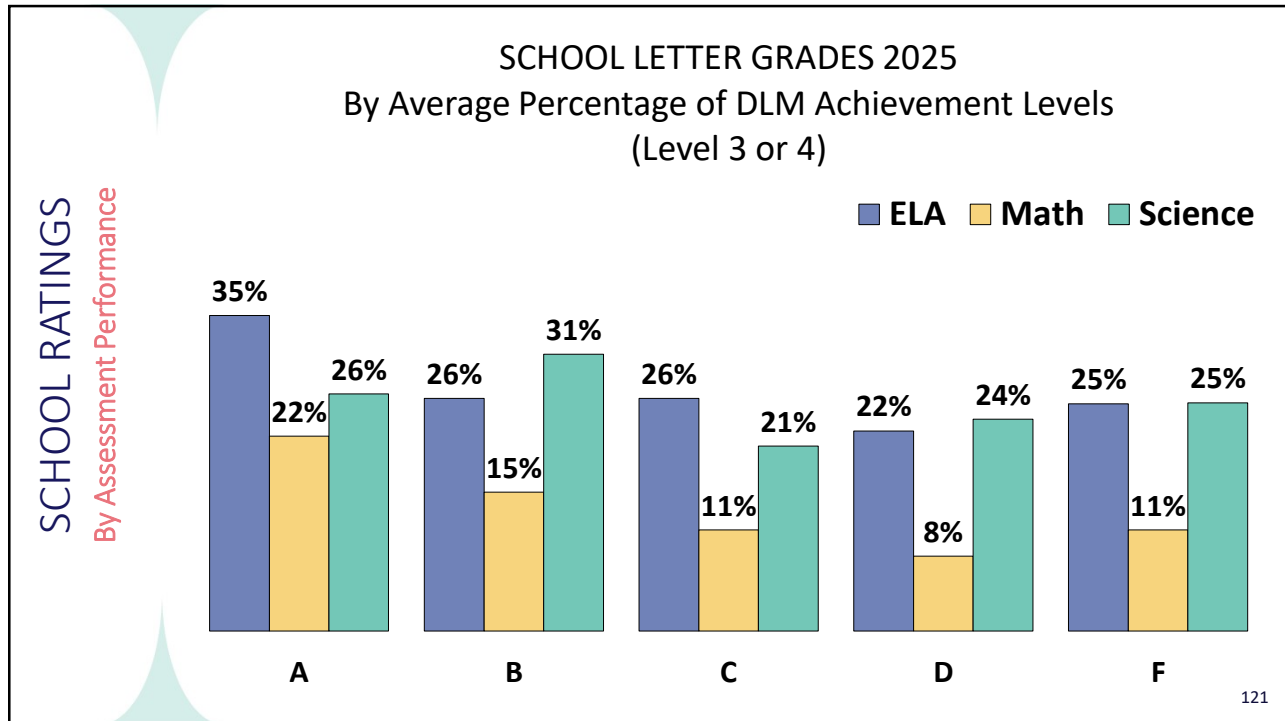
118



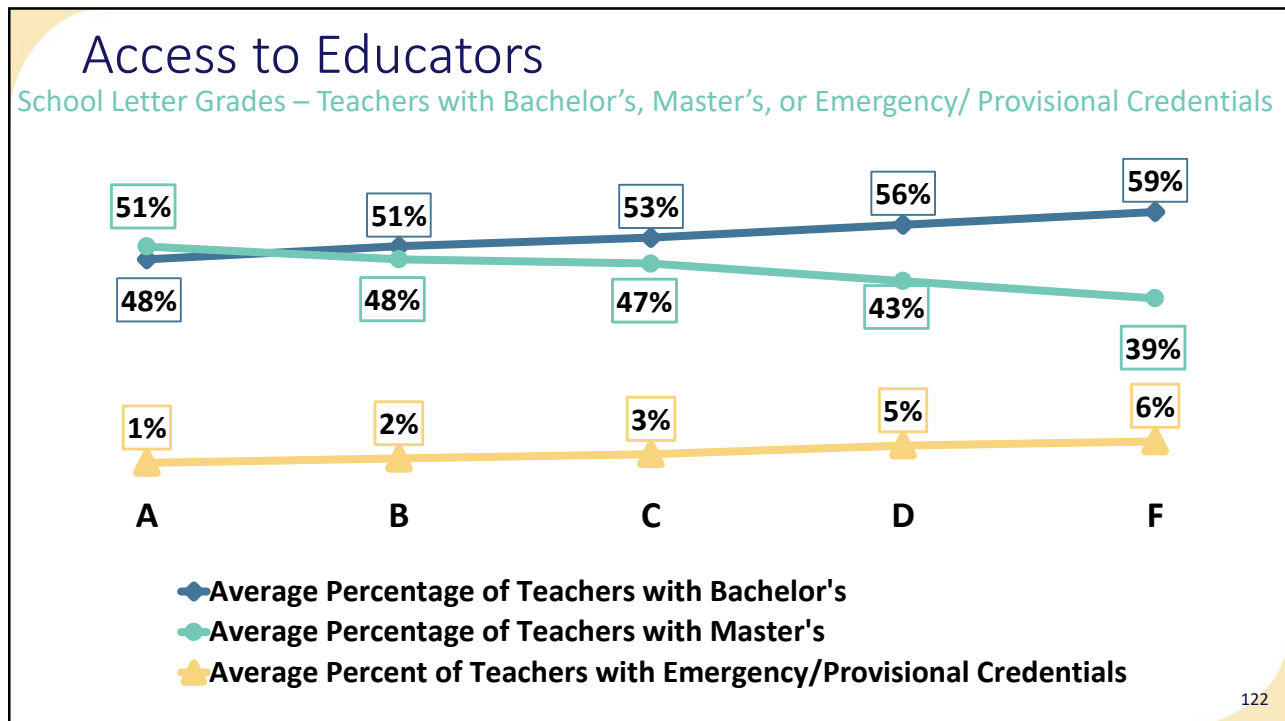
119



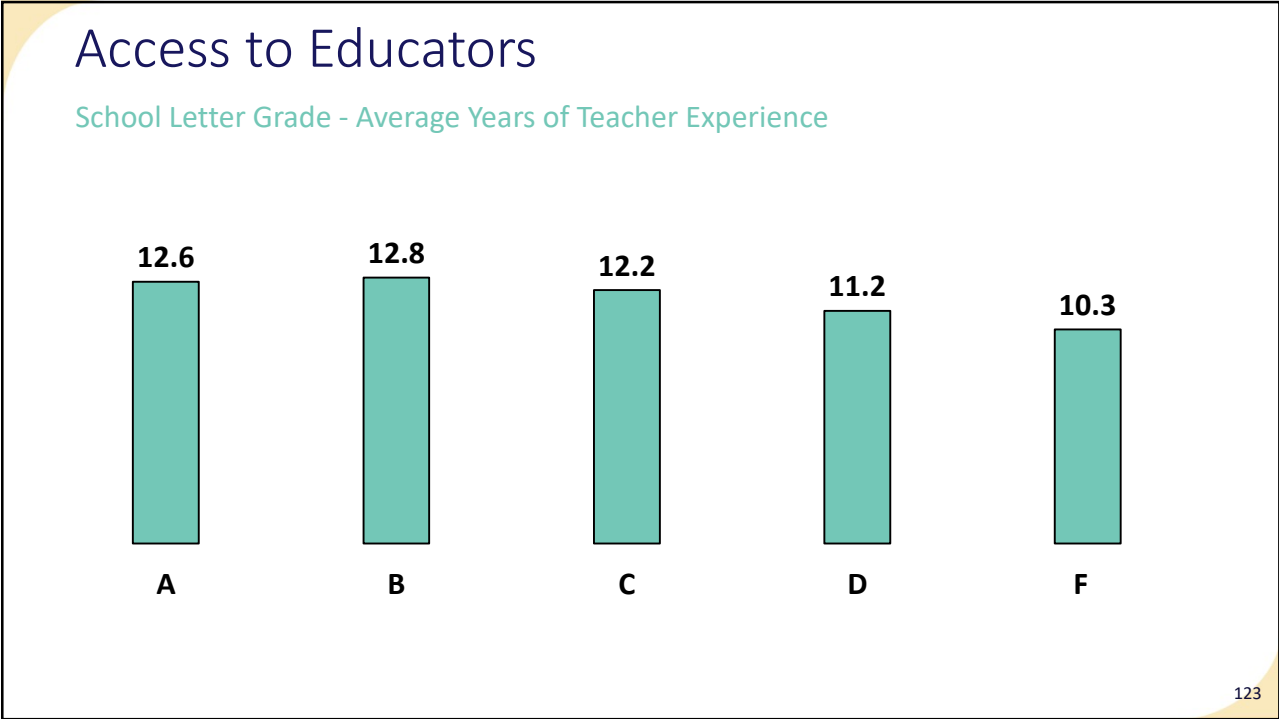
120



121



122



123

PERFORMANCE REPORTS

District Ratings

STATE ACCOUNTABILITY RATING SYSTEMS 124

124

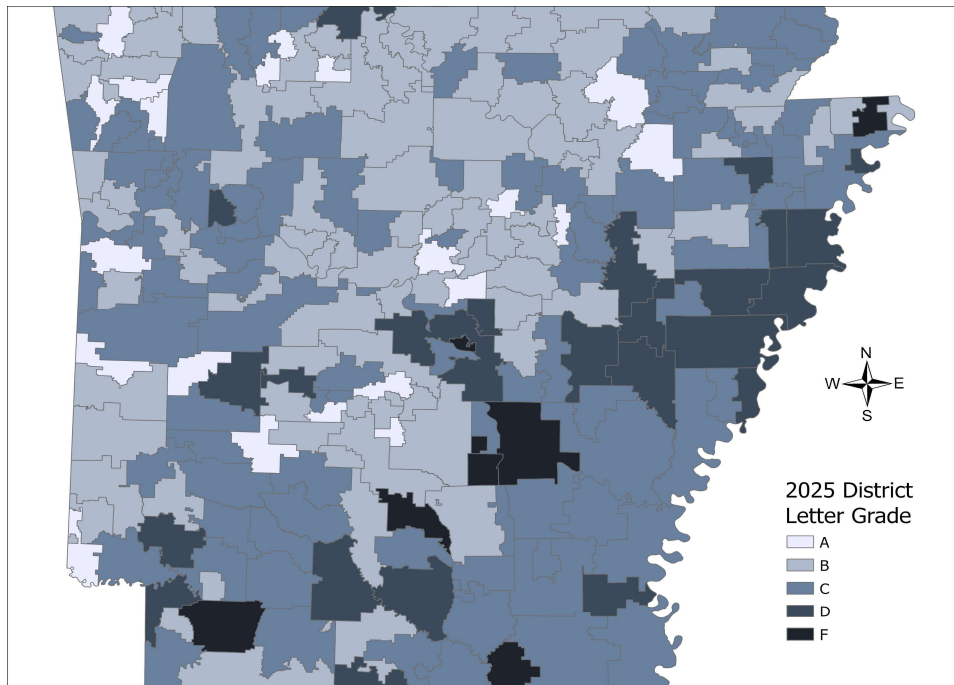
School Rating System – District Grades 2025

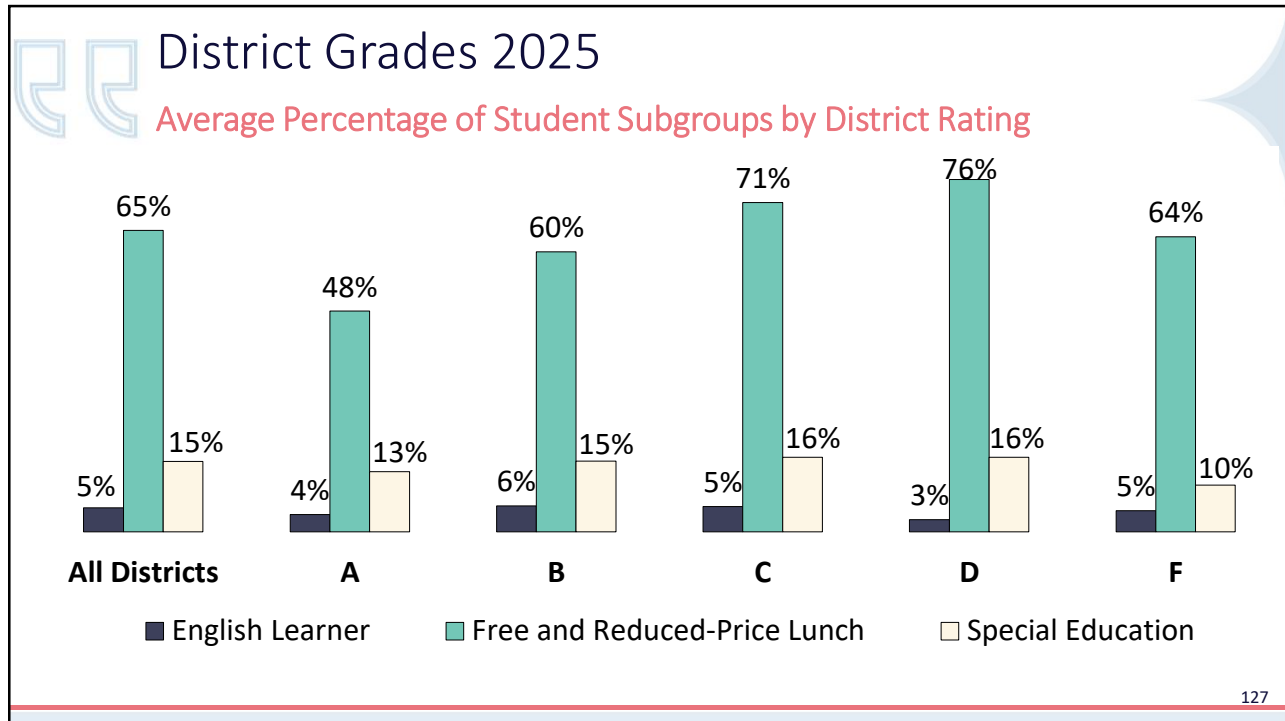
Act 341 of 2025 requires DESE to create a formula for district grades.

District grades are calculated in the same manner as school grades, with the district treated as one K-12 school.

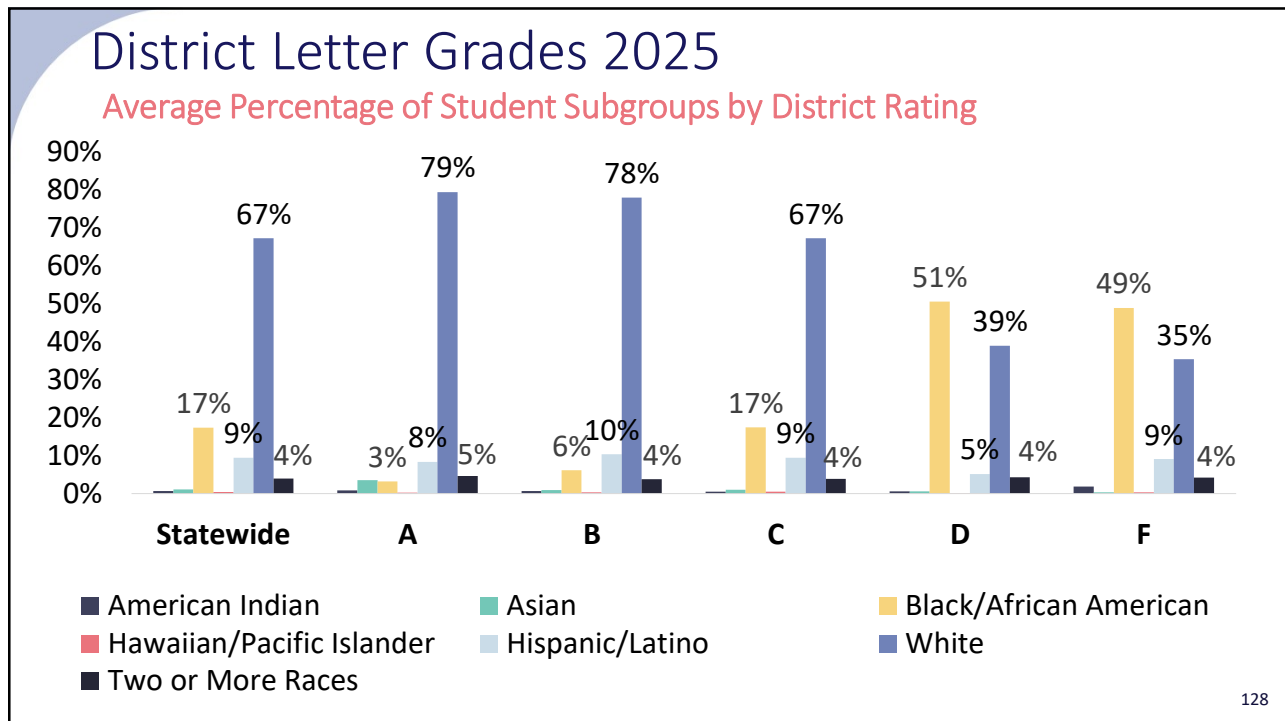
Letter Grade	Number of Districts	Percentage of All Districts	Total Enrollment
A	22	8%	62,901
B	95	37%	199,852
C	99	38%	137,838
D	27	10%	50,751
F	13	5%	16,934
Exempt	3	1%	1,511

School Rating System – District Grades 2025

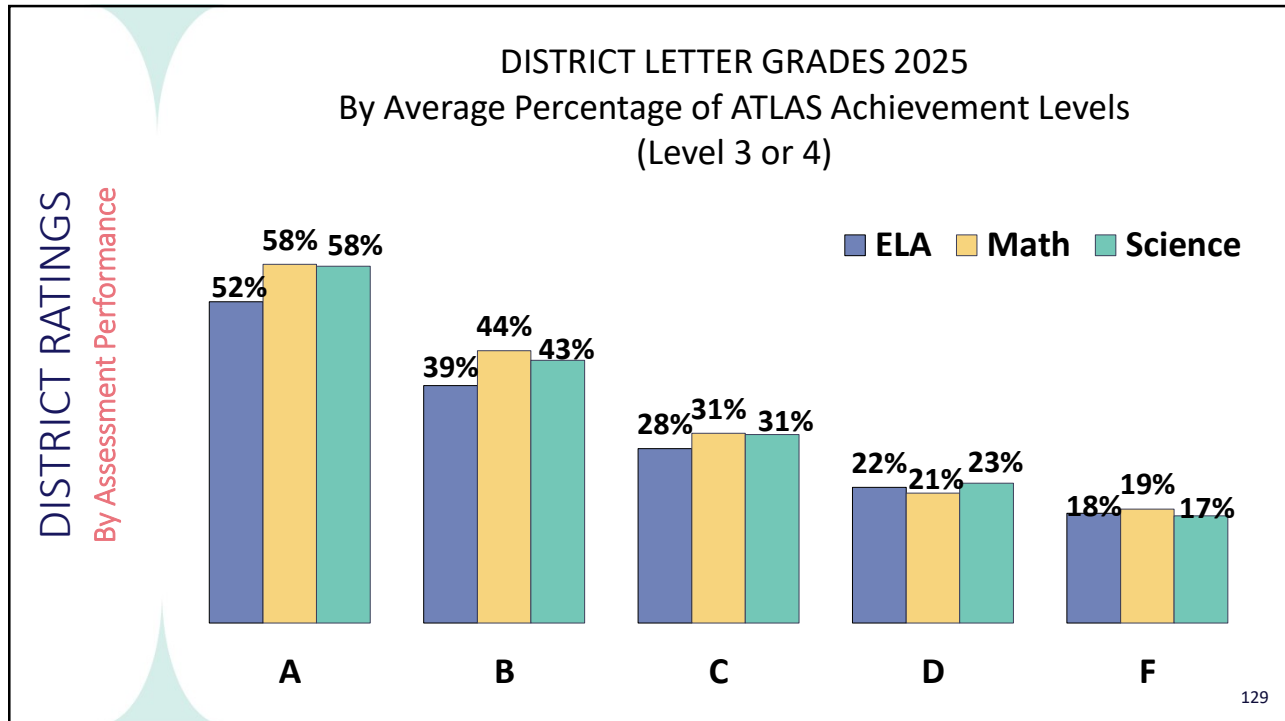




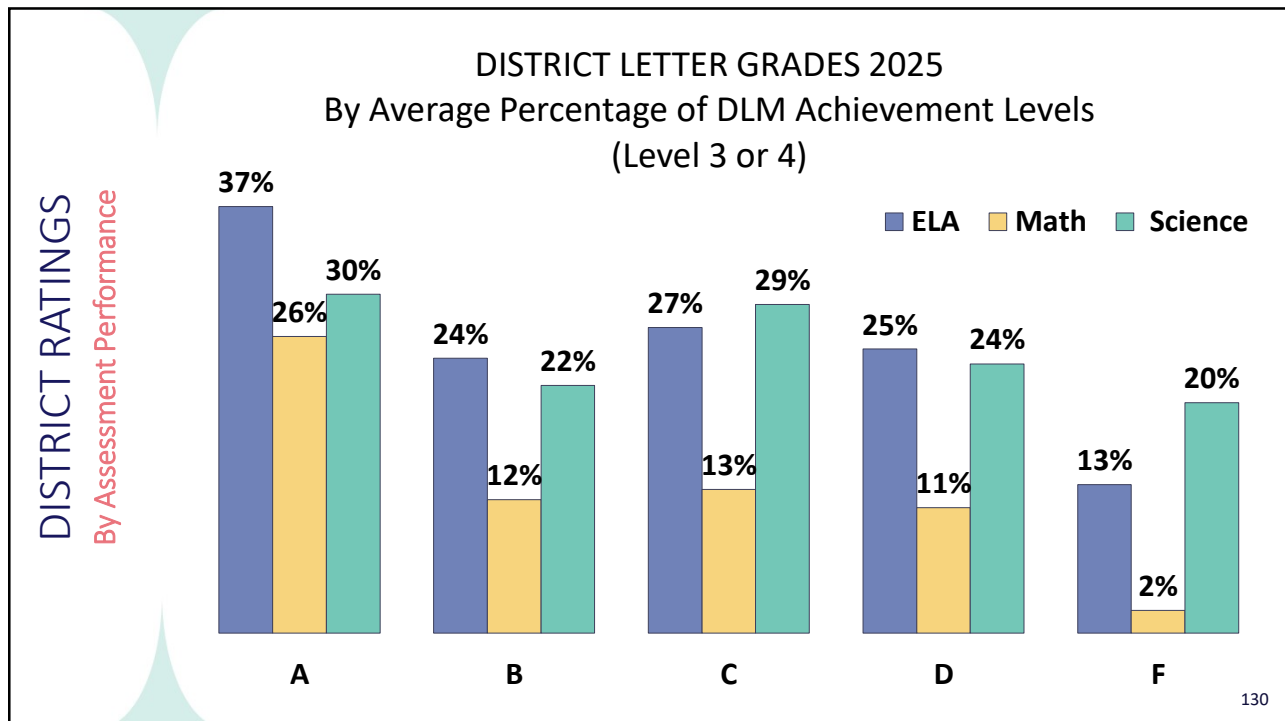
127



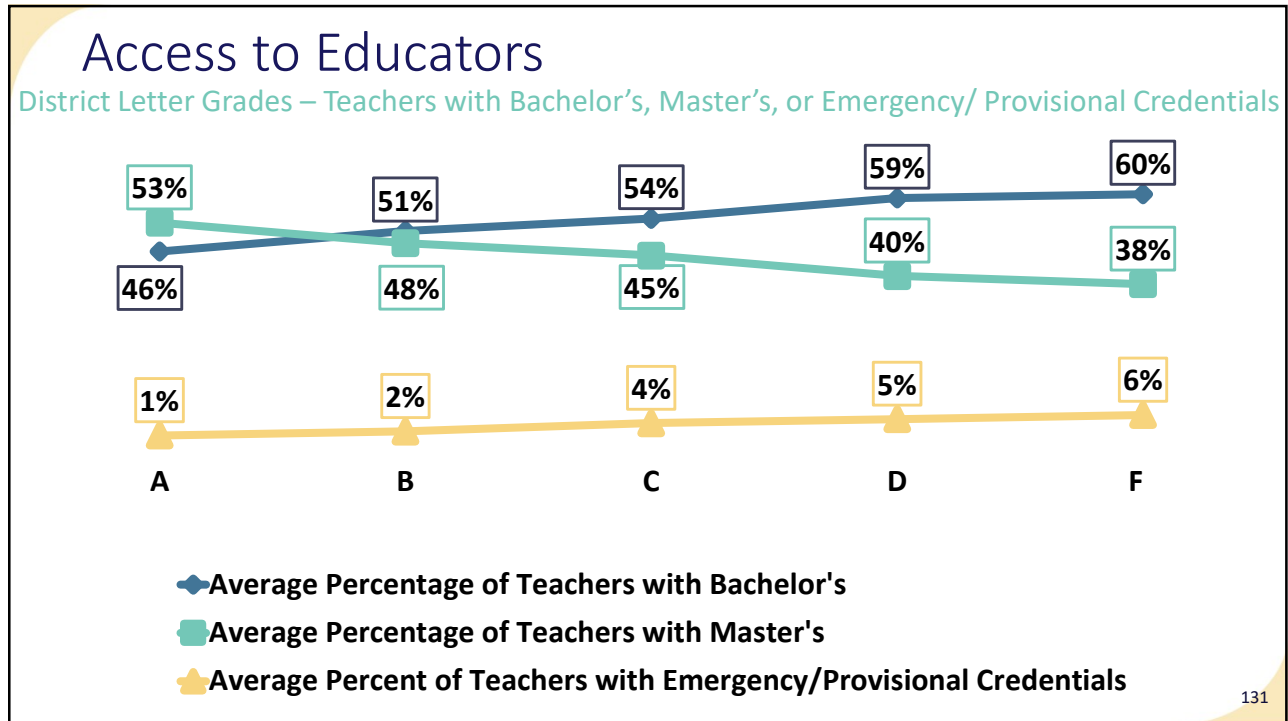
128



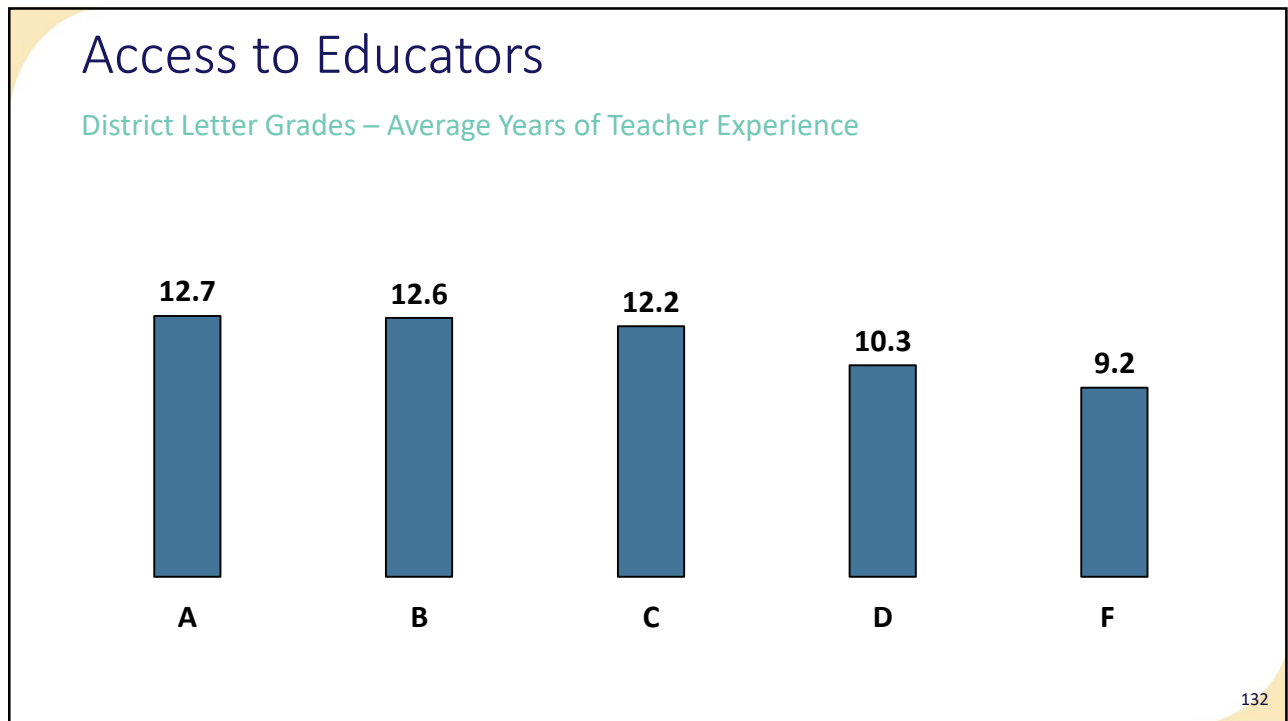
129



130



131



132

```

    graph LR
      A[Academic Standards] --> B[ESSA]
      B --> C[AESAA]
      C --> D[School and District Ratings]
      D --> E[Additional Accountability]
  
```

Additional Accountability for Public Schools

Fiscal Distress and Facilities Distress

133

133

Fiscal Assessment and Accountability Program

A.C.A. §§ 6-20-1901 – 6-20-1914

<p>Purpose is to identify and correct school districts struggling to maintain fiscal stability</p>	<p>DESE identifies</p> <hr style="border: 0.5px solid #ccc;"/> <p>SBOE classifies</p> <hr style="border: 0.5px solid #ccc;"/> <p>Commissioner and SBOE have authority to take corrective actions</p>
----------------------------------------------------------------------------------------------------	------------------------------------------------------------------------------------------------------------------------------------------------------------------------------------------------------

No districts currently in fiscal distress

134

134

Early Intervention

Districts in early intervention cannot incur debt without written approval of DESE

Districts in early intervention must comply with all requirements established by SBOE in rules

Lead Hill England Nevada Helena-West Helena

135

135

Monitoring

DESE provides monitoring for three years after a district is removed from fiscal distress


Since June 2023 Earle

Since September 2023 Pine Bluff

Since May 2024 Lee County

136

136



Facilities Distress

Purpose is to intervene when districts do not provide adequate facilities or comply with facilities rules

No public school district or public school has been in facilities distress since 2009

Facilities Distress Indicator Tracker 2024 and 2025

School Year	2024	2025
Number of Districts	14	10
Number of Violations	15	14
Remediated in the Same School Year	14	10

137

137

THANK YOU

QUESTIONS ON ACCOUNTABILITY & ACHIEVEMENT?

ADRIENNE BECK / BECKA@BLR.ARKANSAS.GOV

ELIZABETH BYNUM / BYNUME@BLR.ARKANSAS.GOV

LEAH HEADLEY / HEADLEYL@BLR.ARKANSAS.GOV

2026 EDUCATIONAL ADEQUACY STUDY

138