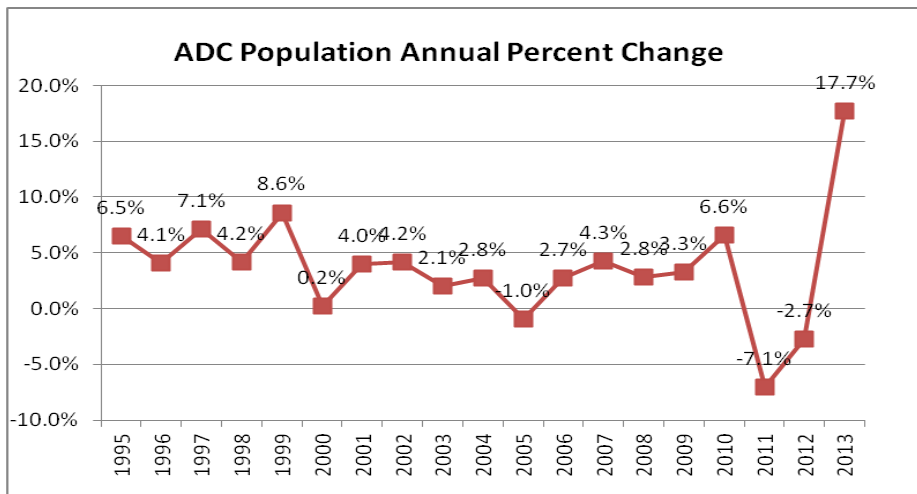


# Arkansas Community Correction PRISON POPULATION PAROLE and PROBATION POPULATIONS

Arkansas had a 17.7% jump in the number of state inmates in 2013, the highest single-year increase in its history. In contrast, the nation as a whole experienced a decrease of 2.2% in the number of inmates. Over the past decade, while the United States' overall prison population grew 5.9%, Arkansas' growth rate was more than five times faster.

## POPULATION INCREASE FACTORS IN 2013

- Parole violator admissions increased 133% for males and 260.9% for females.
- New commitments to ADC increased 13.7% for males and 46.7% for females.
- Prison admissions totaled 9,219, a 49.6% increase—57.3% were new commitments and 40.3% were parole violators.



The parole violator bed space impact was calculated to be 2,565.  
The new commitment bed space impact was calculated to be 812.

## PRISON POPULATION 2013

### TRENDS:

- In 2013, the prison population increased 17.7% - which is 105.8% greater than the second largest increase (1999) for the previous 15 years.
- Total prison admissions increased 47% for males and 73.2% for females in 2013.
- Releases in 2013 totaled 6,544 for a growth of 2,675 in the prison population.

### POPULATION:

- 16.8% average increase in male and female new commitments.
- In 2013, male and female parole violators made up 42.7 percent of the total inmate population compared to 26.6% in 2012.
- Average sentence length was 98.7 months for non-lifers.

### PROJECTED POPULATION:

- Ten-year population growth projected by JFA Associates:
  - ⇒ 17,558 at the end of 2014, and 20,024 at the end of 2024 (baseline projection).  
Growth of 1.3% per year through 2024.
  - ⇒ 17,791 at the end of 2014, and 21,906 at the end of 2024 (high projection).  
Growth of 2.1% per year through 2024.

### ACC CENTERS:

- Jurisdictional count today is 1,910; 355 are on the backup list.

## ACT 570

- Adjustments to drug statutes were projected to decrease admissions by 265 and shorten sentences by 10 months.

Drug Crime	N	Percent of New prison commits	Avg. Prison Sentence (mos.)	Number of Probation Admits	Avg. Prob. Term (mos.)
2011					
Drug paraphernalia	78	1.8%	48.3	459	46.9
Manuf/Deliv/possession controlled substance	1,262	29.1%	79.1	3,262	46.9
Total	1,340	30.9%	77.3	3,721	46.9
2012					
Drug paraphernalia	89	1.9%	41.3	267	45.7
Manuf/Deliv/possession controlled substance	1,249	26.6%	66.8	2,512	46.3
Total	1,338	28.5%	65.1	2,782	46.2
2013					
Drug paraphernalia	252	5.1%	53.8	349	44.7
Manuf/Deliv/possession controlled substance	1,181	23.7%	62.7	2,573	46.9
Total	1,433	28.7%	61.2	2,922	46.6

- Adjustments to theft/property statutes were projected to decrease admissions by 85 and shorten sentences by 9 months.

Statute Description	2013		Prior to Act 570	
	Number	Avg. Sent. (mos.)	Number	Avg. Sent. (mos.)
Theft of property	122	59.2	313	68.2
Theft of services	0	-	0	-
Theft by receiving	55	45.4	80	55.8
Fraudulent use of credit card	4	63.0	22	54.8
Theft of wireless services	0	-	0	-
Hot check	0	-	2	84.0
Criminal mischief I	8	46.6	14	55.3
Criminal mischief II	2	48.0	3	36.0
	<b>191</b>	<b>54.7</b>	<b>434</b>	<b>64.7</b>

Source: JFA Associates study

## PAROLE & PROBATION POPULATIONS 2013

### CURRENT:

- Jurisdictional population today is 52,391 which includes 27,726 on regular probation; 2,268 in Drug Court; and 22,397 on parole supervision.

### TRENDS:

- Parole admissions decreased 1.9% in 2013. The total active parole population fell 5.3%, primarily due to the large increase in the number of parolees returned to prison.
- Probation admissions fell 3.5% in 2013, the second consecutive year of decline and the lowest level since 2010. The probation population fell by 2.7% as a whole during the year.
- Average supervision was 59.8 months for parolees and 47.5 months for probationers.
- Parole revocations increased 76.8% (5,186), the highest rate in Arkansas history.
- The higher parole revocation rate accounted for 27.2% (3,051 cases) of all releases from community supervision, which was more than four times the 2012 percentage.
- Felony probation revocations increased 20.0%.

### PROJECTED POPULATION:

- Over the next 10 years, the total parole population is projected to remain nearly static, with possibly a slight decrease of approximately 500 offenders by 2024.
- During this same time, the active probation population is expected to grow 2.9% per year, with the total reaching 24,542 by 2024.

## ACC FY 2014 Accomplishments

### **Parole and Probation Operations:**

- Implemented Board of Corrections' Policy on parole revocations
- Split Little Rock office into two areas – separated Parole and Probation
- New Area Managers for both operations in Little Rock
- Added 11 new officers and 2 Assistant Area Managers in Little Rock
- Decreased vacancies and reduced turnover statewide
- Received approval for a 6% geographic compensation differential for central Arkansas
- MOU with ALETA for Parole/Probation Officer Training Academy
- Established a Special Response Team (SRT) to focus on absconders/provide emergency response
- Expanded use of GPS monitoring
- Implemented an automated Offender Violation Guide (replacing the Matrix)
- Implemented automated Risk and Needs Assessment (replacing ORAS)
- Pre-Sentencing Probation Pilot
- Automated Incident Reporting System
- Automated Parole Board processes

### **Realigned Executive Staff/Functions:**

- Two new Assistant Directors in Field Services
- New Deputy Director Communications
- Made HR Administrator report to Director
- New Director of Reentry Services

### **Communications:**

- Opened lines of communications from all levels of the organization
- Acclaim newsletter keeps employees advised of what's going on
- Updated ACC Webpage to include an absconder wanted list
- Implementing a Community Spirit newsletter
- Area Managers meeting with LLE's.

### **Implemented Critical Incident Review Process**

### **Strategic Plan developed from input from all levels of the agency**

### **Empowered Area Managers to bring issues to the table; Monthly meetings are held to try to bring consensus on policy changes**

### **Committees formed from staffing from all areas/levels of agency to address issues such as:**

- Technology
- Risk and Needs Assessment
- Offender Violation Guide
- Minimum Reporting Kiosks
- Pre-Sentencing Probation/Pilot
- Automated Incident Reporting System
- Automated Parole Board processes

### **Act 1030 of 2013 Recidivism Study completed by JFA Associates (FY09 Cohorts):**

- 56.8% Re-arrest;
- 26.5% Reconviction; and
- 44% Re-incarceration

### **Numerous Policy Revisions including:**

- Release of offender information and
- Major changes to Technical Violator Program

### **Reentry Projects:**

- Act 1190 of 2013 Reentry Committee - Comprehensive Reentry Plan due October 2014 to Legislature
- Reduction of Recidivism Planning Grant
- Mentoring Program Grant
- The Good Grid
- Reentry Solutions Website
- Community-based Organizations

# ACC FY 2014 Revised Summary Biennial Budget Requests

Priority Requests	Positions		FY 2016	FY 2017
<b>Medical Contract Incremental Increases</b>			<b>\$199,477</b>	<b>\$385,874</b>
<b>Reentry Programs</b>				
Transitional Reentry Centers (300 Y1/500 Y2)			<b>\$3,344,130</b>	<b>\$5,588,150</b>
<b>Field Services</b>				
Parole/Probation Officer	45	80	\$2,567,948	\$4,144,990
Sub. Abuse Program Leader	7	7	\$221,510	\$308,658
Asst. Area Manager	8	9	\$682,288	\$466,464
Admin. Specialist	5	6	\$194,305	\$220,166
Asst. Treatment Program Manager	2	2	\$160,054	\$119,454
Corporal (Transportation)	4	6	\$143,171	\$214,529
Office Expansion/Training			<u>\$141,904</u>	<u>\$141,904</u>
<b>Total Field Services</b>	<b>71</b>	<b>110</b>	<b>\$4,111,180</b>	<b>\$5,616,165</b>
<b>General Agency Operations</b>				
Information Technology	1	1	\$468,127	\$309,527
Research & Planning	2	2	\$170,341	\$163,689
Shared Accountable			<u>\$235,009</u>	<u>\$235,009</u>
<b>Total General Agency Operations</b>	<b>3</b>	<b>3</b>	<b>\$873,477</b>	<b>\$708,225</b>
<b>Center Operations/Expansions</b>				
Building & Grounds Maintenance			\$500,000	\$500,000
Equipment			\$508,809	\$500,000
SAPL (Omega)	3	3	<u>\$141,882</u>	<u>\$132,281</u>
<b>Total Center Operations</b>			<b>\$1,150,691</b>	<b>\$1,132,281</b>
Omega 200 Bed Expansion (7-1-16)		24		<b>\$2,698,220</b>
<b>Special Revenue</b>			<b>\$1,000,000</b>	<b>\$1,000,000</b>
<b>Residential Services</b>			<b>\$100,000</b>	<b>\$375,000</b>