

Realigning Arkansas's Health Care System to Meet the Needs of Arkansans

Craig Wilson, JD, MPA

Email: jcwilson@uams.edu

Phone: 501-526-2244

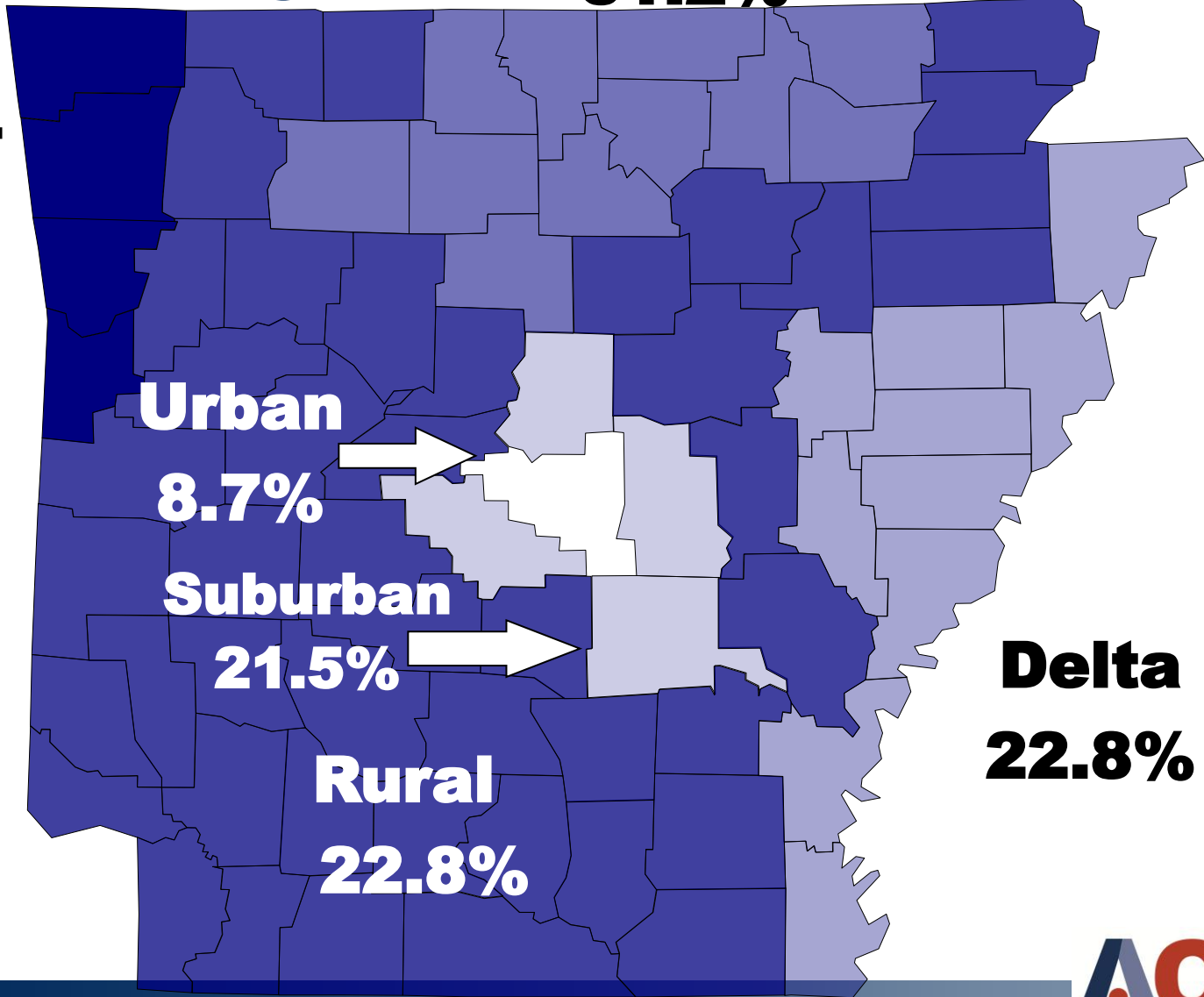


ARKANSAS CENTER FOR HEALTH IMPROVEMENT

Uninsured Arkansans 19-64 years of age

Mountain
31.2%

**North-
west**
23.7%



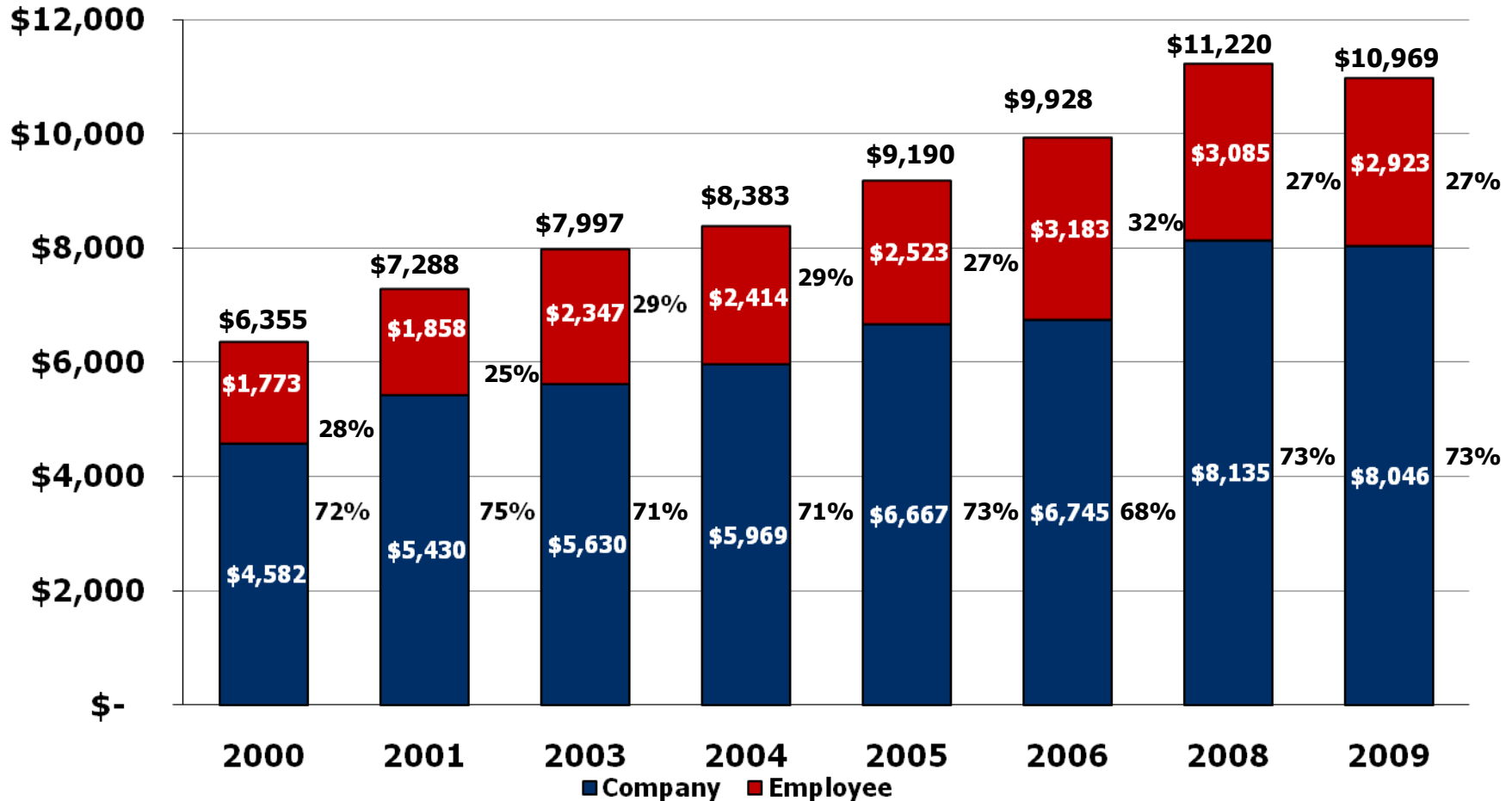
Urban
8.7%

Suburban
21.5%

Rural
22.8%

Delta
22.8%

Changing Cost Allocations for Arkansas Families' Annual Insurance Premiums



Source: AHRQ. Medical Expenditure Panel Survey (2000-2009 Tables of private-sector data by firm size and state (Table II.D.1) and II.D.2). Available at www.meps.ahrq.gov/mepsweb/data_stats/quick_tables_search.jsp?component=2&subcomponent=2.

Economic Burden of Chronic Disease

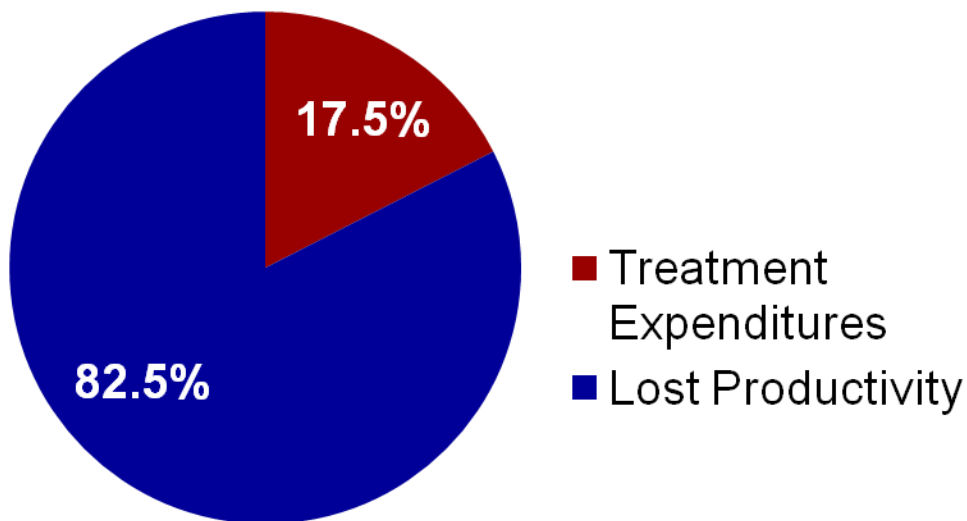
Reported Cases in Arkansas, (projected 2009 and as % of population)

Cancers (all):	149,896	5.2%
Diabetes:	146,964	5.1%
Heart Disease:	249,276	8.7%
Hypertension:	470,771	16.5%
Stroke:	33,491	1.2%
Emotional Disturbances:	305,331	10.7%
Pulmonary Conditions:	542,322	19.0%

Economic Burden of Chronic Disease

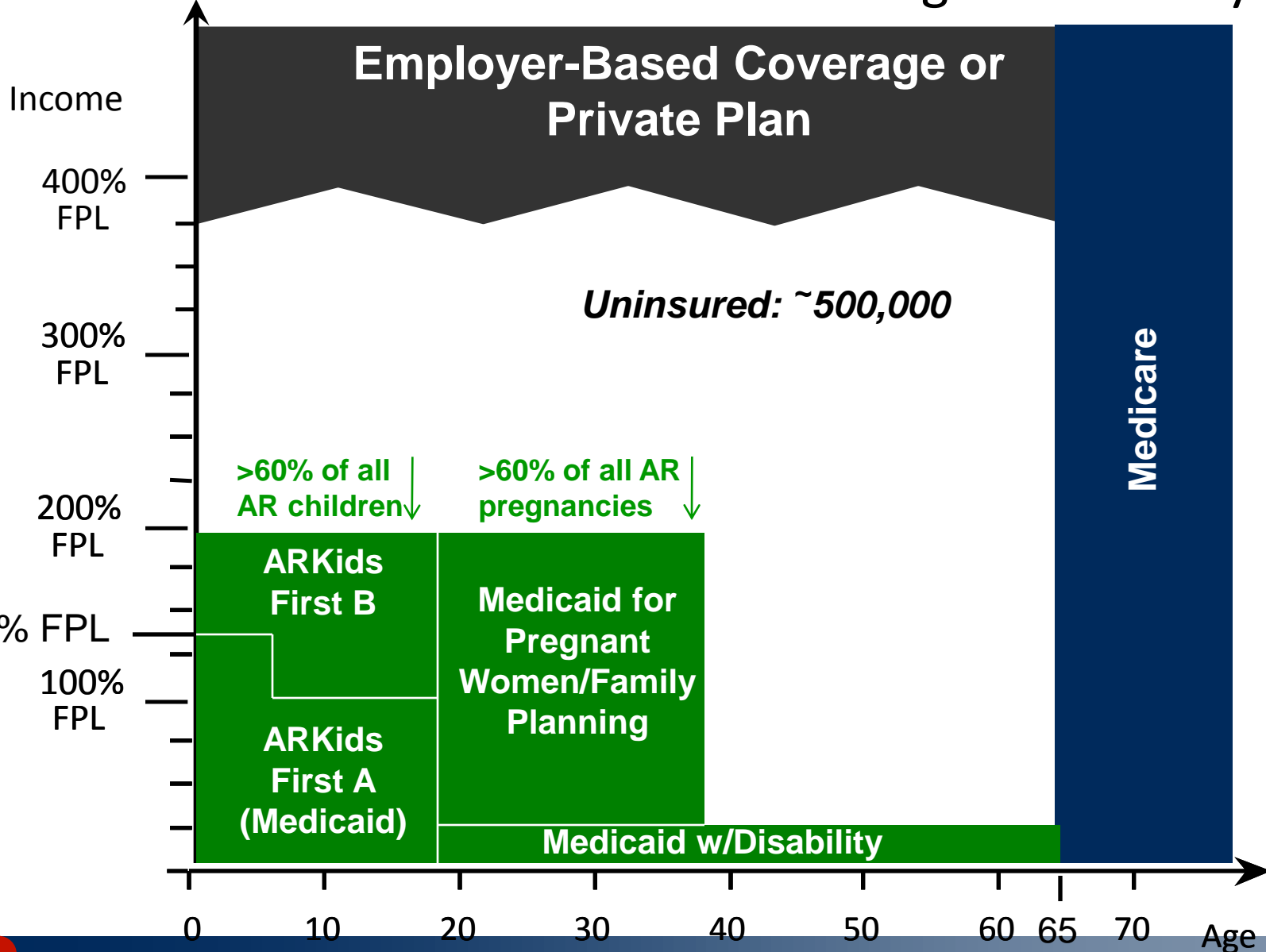
Economic impact in Arkansas, projected 2009 (Annual Cost in Billions)

Treatment Expenditures:	\$3.65
Lost Productivity:	\$17.2
Total Costs:	\$20.85



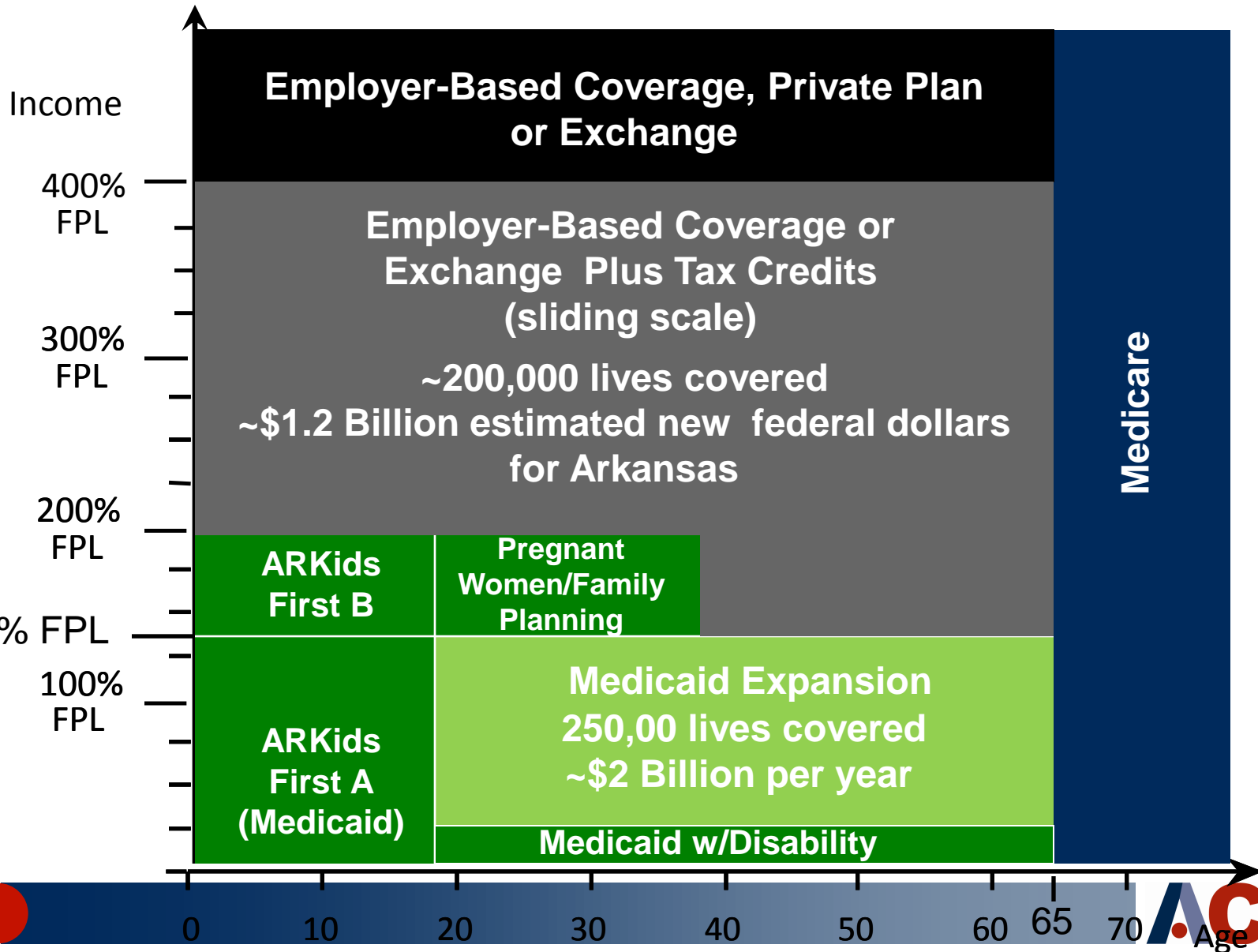
2011 (Pre-Reform)

Arkansas Health Insurance Coverage Availability



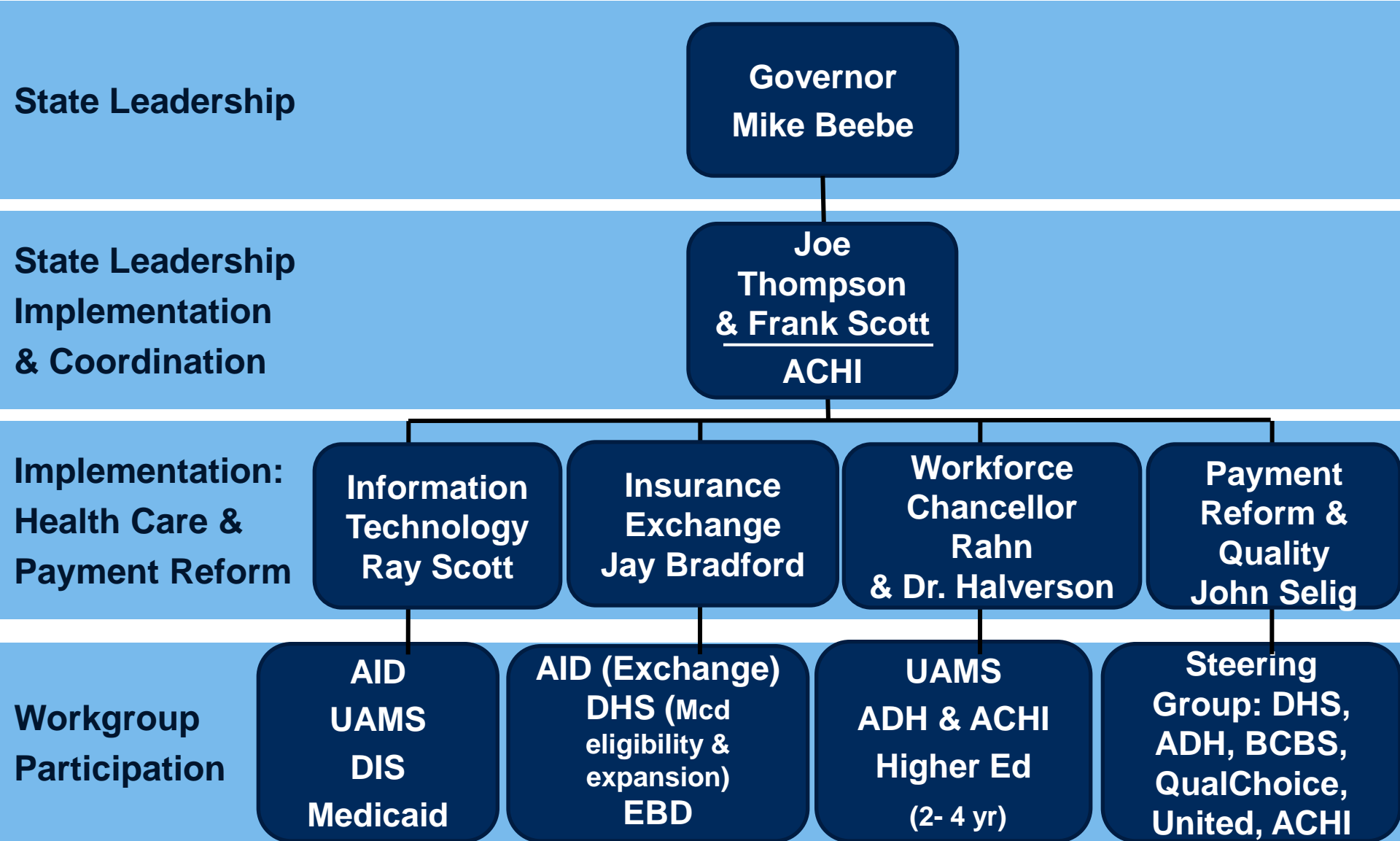
January 1, 2014 (Exchanges Operational)

Arkansas Health Insurance Coverage Availability



Arkansas Health System Change

Agency Organizational Structure



Open Questions

- **Medicaid expansion offers promise to remove financial barriers to health care in rural areas but could this exacerbate access and provider availability issues?**
- **What will be the “take up” rate among the newly eligible Medicaid beneficiaries?**
- **New provider payment strategies—what will happen to fee-for-service?**
- **Few, some or many employers will abandon health insurance benefits?**
- **How will large employers (+100 full-time employees) react when open to exchange in 2017?**



Lessons from Oregon: Effects of Coverage

- **Probability of use of outpatient care increased by 35%**
- **Hospital admissions increased by 30%**
- **No statistically significant change in ER utilization**
- **Increase in use of preventive care (60% increase in mammograms and 20% increase in cholesterol monitoring)**
- **40% reduction in reports of borrowing money or skipping bill payments because of medical expenses**
- **25% decrease in probability of medical bills sent to debt collectors**
- **25% more likely to report good health and 25% less likely to report depression**



http://www.achi.net/HCR.asp

File Edit View Favorites Tools Help

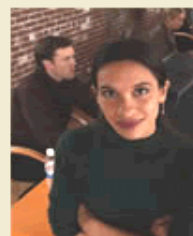
Web Search Bookmarks Settings Mail My Yahoo! Answers Games Anti-Spy News Shopping

Arkansas Center for Health Improvement

Home RSS Print Page Tools



Arkansas Center for Health Improvement



A nonpartisan, independent, health policy center that serves as a catalyst for improving the health of Arkansans.

Home	Goals/Strategies	Initiatives	News/ Events	Publications/Reports	Legislation	Resources	About Us	Contact Us	Archive
------	------------------	-------------	--------------	----------------------	-------------	-----------	----------	------------	---------

Implications of the 2010 Patient Protection and Affordable Care Act for Arkansans

The new health care act presents many opportunities and some challenges for Arkansans. The Arkansas Center for Health Improvement has been examining various aspects of the law to determine implications for our state. We will be publishing a series of briefs on this website that will provide an overview of specific issues and the populations effected.

[Click here to sign up for e-mail updates](#)

Current Publications:

[Summary Overview of the 2010 Patient Protection and Affordable Care Act](#)

[Overview Timeline for Health Care Reform Implementation under the Patient Protection and Affordable Care Act](#)

[Issue Brief - Implications for Arkansas Small Businesses](#)

[Issue Brief - High Risk Pool and Implications for Arkansas](#)

[Issue Brief - Health Care Coverage for Young Adults \(19-26 years of age\)](#)